

Sample Results Summary Sheet

Please return this form to the Curator for each allocated Sample

Sample ID: RA-QD02-0011-1

PI: Akira Tsuchiyama

Type and date of analysis performed:

Tomography Jan/22/2011 (7 keV)

 Jan/24/2011 (8 keV)

Elements or phases identified: (Mg, Si, olivine, pyroxene, aromatic carbon, etc.)

Mode	OI	LPx	HPx	PI	Tr	Tae	Chm	CP	Kam
Vol %	33.2	-	40.2	26.6	-	-	-	-	-

Contaminant phases identified: (Al, SUS, carbon particles, etc.)

N/A

Sample handling:

Exposed in atmosphere.

State of sample pre-analysis:

Attached to carbon fiber with resin.

State of sample post-analysis:

N₂ hold in sample holder.

Analysis data Notes: (summary of the attached analysis data and/or images)

See attached sheets.

RA-QD02-0011-1

Operation Date Jan/22/2011 (7 keV)
 Jan/24/2011 (8 keV)
operated by T. Matsumoto (7 keV)
 T. Matsumoto (8 keV)
analyzed by T. Matsumoto

Mode	Ol	LPx	HPx	Pl	Tr	Tae	Chm	CP	Kam
Vol %	33.2	-	40.2	26.6	-	-	-	-	-

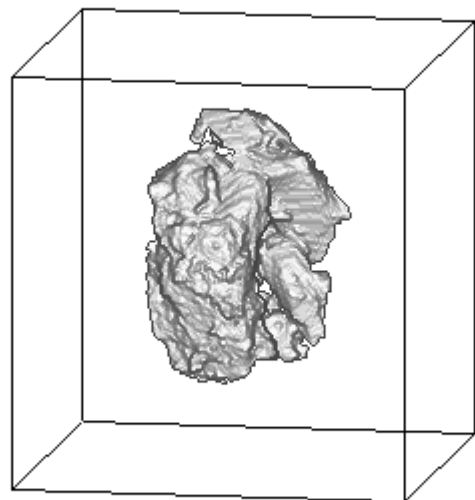
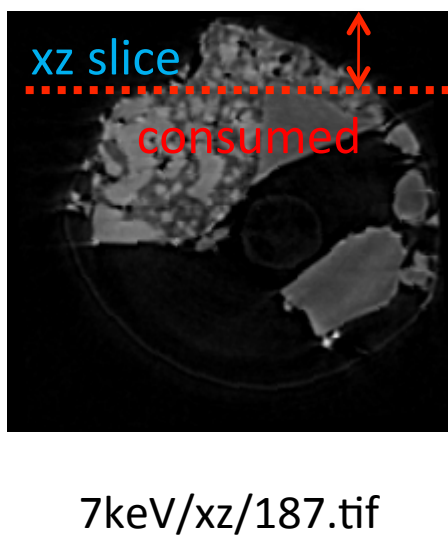
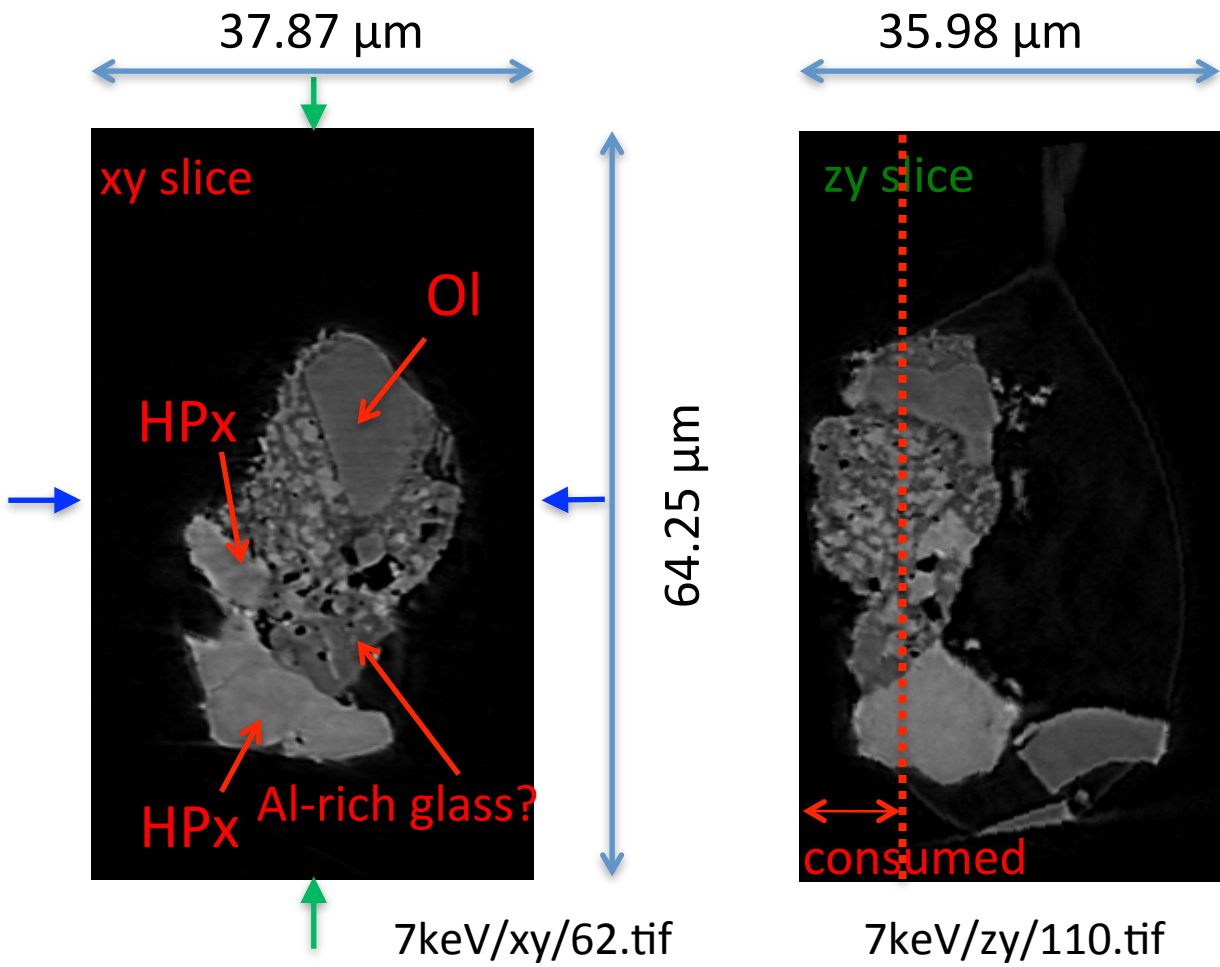
A (μm)	B (μm)	C (μm)	V (μm^3)	Porosity (%)
12.8	18.3	23.4	11326	11.014

Ol: olivine
LPx: low calcium pyroxene
HPx: high calcium pyroxene
Pl: plagioclase
Tr: troilite
Tae: taenite
Chm: chromite
CP: calcium phosphate
Kam: kamacite

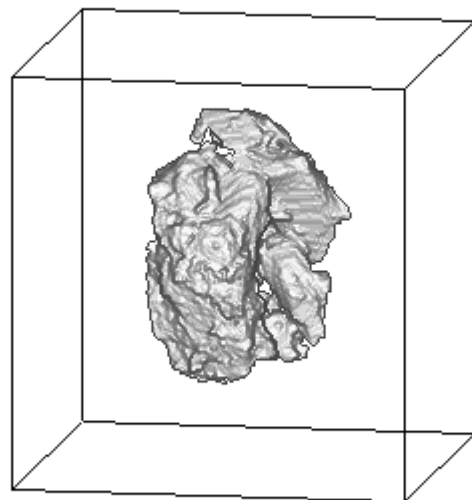
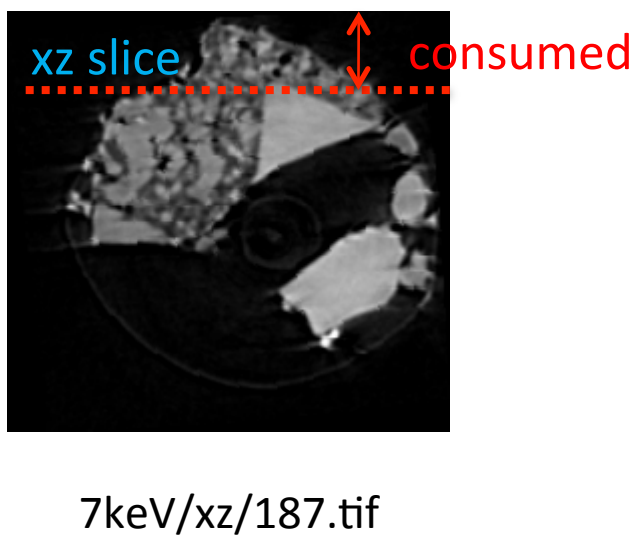
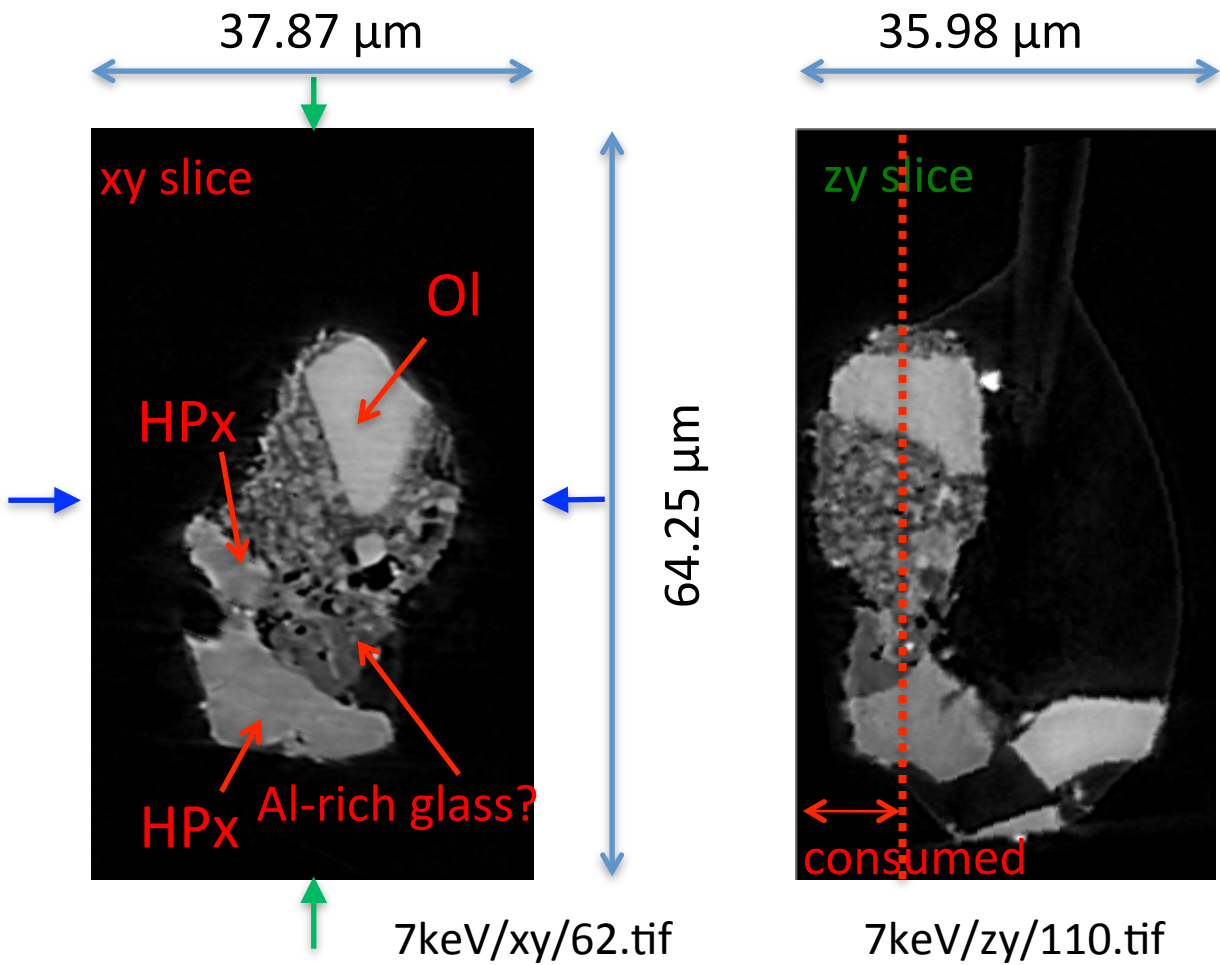
A, B, and C: shortest, middle, and longest axial radii, respectively,
of a best-fit ellipsoid for the particle

V: particle volume without pore
dz: CT image interval
LAC: linear attenuation coefficient of X-ray

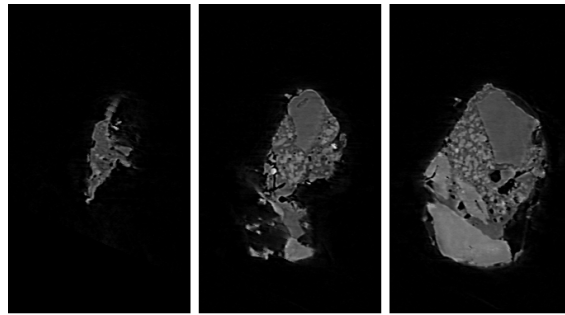
RA-QD02-0011-1 7 keV



RA-QD02-0011-1 8 keV



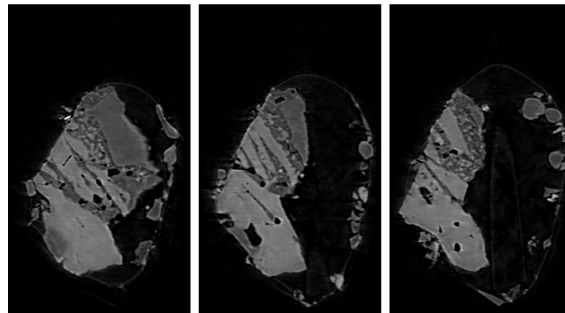
RA-QD02-0011-1 7 keV catalogue



037.tif

053.tif

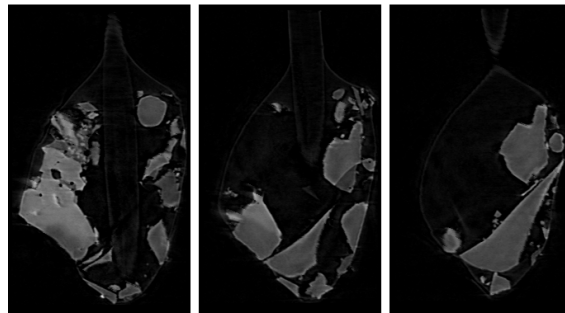
069.tif



085.tif

101.tif

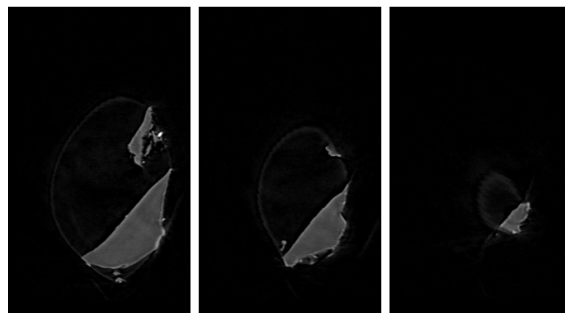
117.tif



133.tif

149.tif

165.tif



181.tif

197.tif

213.tif

dZ = 2.7424 μm



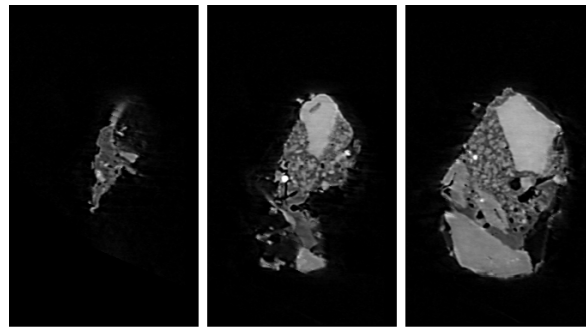
20 μm



575 cm^{-1}

(LAC)

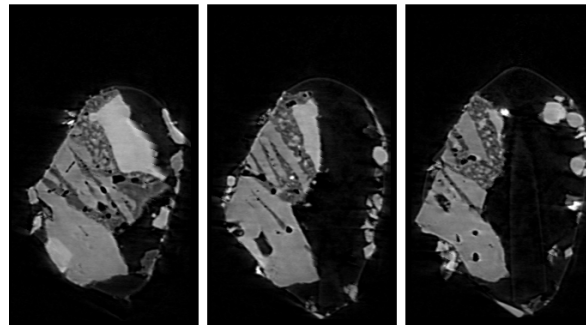
RA-QD02-0011-1 8 keV catalogue



037.tif

053.tif

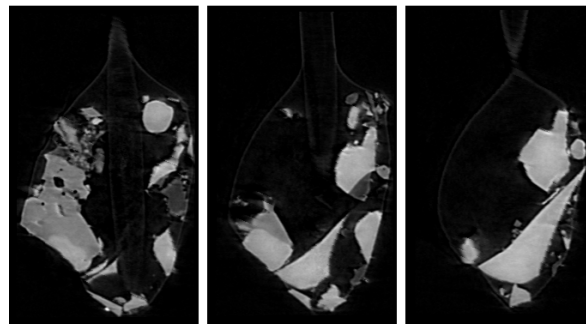
069.tif



085.tif

101.tif

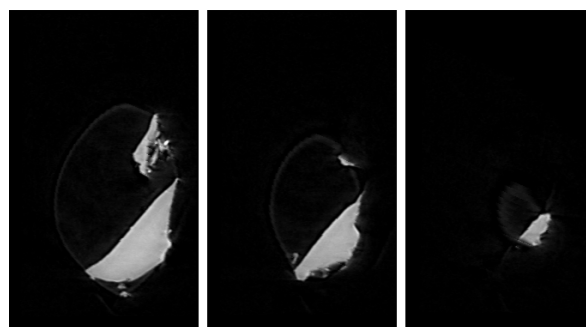
117.tif



133.tif

149.tif

165.tif



181.tif

197.tif

213.tif

dZ = 2.7424 um



20 um

431cm⁻¹

(LAC)

RA-QD02-0011-1 Dual energy histogram

