

## Sample Results Summary Sheet

Please return this form to the Curator for each allocated Sample

**Sample ID:** RA-QD02-0025-2

**PI:** Tomoki Nakamura

**Type and date of analysis performed:**

XRD Jan/28/2011~ Feb/3/2011

FE-SEM, FE-EPMA Feb/19/2011~ Feb/28/2011

**Elements or phases identified:** (Mg, Si, olivine, pyroxene, aromatic carbon, etc.)

XRD : PI

FE-SEM : PI

FE-EPMA : Si, Al, Ca, Na, K

**Contaminant phases identified:** (Al, SUS, carbon particles, etc.)

N/A

**Sample handling:**

XRD

Attached to carbon fiber with resin.

FE-SEM, FE-EPMA

Exposed in atmosphere.

Polished by M cross

C-coated (20 nm)

**State of sample pre-analysis:**

Attached to carbon fiber with resin. (XRD)

Polished section with resin embedded (FE-SEM, FE-EPMA)

**State of sample post-analysis:**

Attached to carbon fiber with resin. (XRD)

Polished section with resin embedded, C-coated (FE-SEM, FE-EPMA)

N<sub>2</sub> hold in sample holder.

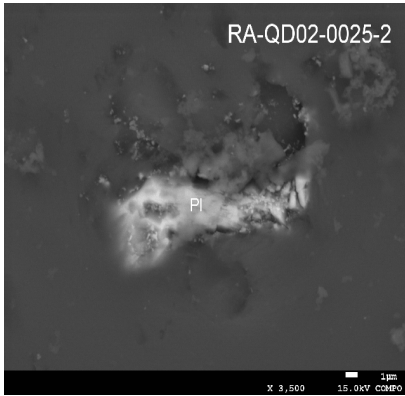
**Analysis data Notes:** (summary of the attached analysis data and/or images)

See attached sheets.

# RA-QD02-0025-2

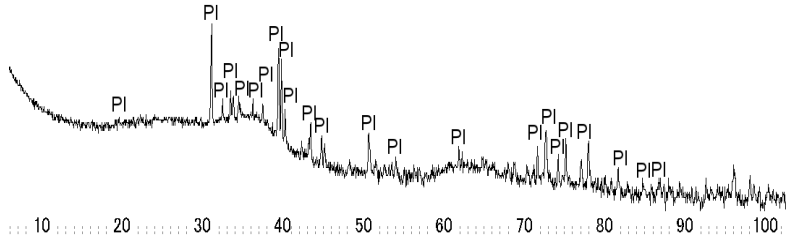
Analysis S-XRD (polish) FE-SEM FE-EPMA  
 Present status Putted butt

FE-SEM/BSE



S-XRD

Itokawa RA-QD02-0025-2  
 Pl: plagioclase



FE-EPMA

wt%	Olivine n=COI 1 sigma LPx n=0 .Px 1 sigm: HPx n=0 tPx 1 sigm:Plagio n=1PI 1 sigma
SiO2	64.40
TiO2	0.00
Al2O3	20.20
FeO	0.00
MnO	0.01
MgO	0.00
CaO	2.00
Na2O	10.62
K2O	1.02
Cr2O3	0.02
NiO	0.00
P2O5	0.01
SO3	0.00
<b>Total</b>	<b>98.27</b>
SUM	

Comment

Olivine (Fa#)	
LPx(Fs#)	
LPx(Wo#)	
LPx(En#)	
HPx(Fs#)	
HPx(Wo#)	
HPx(En#)	
Pl(Or#)	5.42
Pl(An#)	8.93
Pl(Ab#)	85.65