

Sample Results Summary Sheet

Please return this form to the Curator for each allocated Sample

Sample ID: RA-QD02-0025-01

PI: Akira Tsuchiyama

Type and date of analysis performed:

Tomography Jan/22/2011 (7 keV)

 Jan/24/2011 (8 keV)

Elements or phases identified: (Mg, Si, olivine, pyroxene, aromatic carbon, etc.)

Mode	OI	LPx	HPx	PI	Tr	Tae	Chm	CP	Kam
Vol %	-	-	0.31	99.7	-	-	-	-	-

Contaminant phases identified: (Al, SUS, carbon particles, etc.)

N/A

Sample handling:

Exposed in atmosphere.

State of sample pre-analysis:

Attached to carbon fiber with resin.

State of sample post-analysis:

N₂ hold in sample holder.

Analysis data Notes: (summary of the attached analysis data and/or images)

See attached sheets.

RA-QD02-0025-01

Operation Date Jan/22/2011 (7 keV)
 Jan/24/2011 (8 keV)
operated by T. Ogami (7 keV)
 T. Ogami (8 keV)
analyzed by J. Matsuno

Mode	Ol	LPx	HPx	Pl	Tr	Tae	Chm	CP	Kam
Vol %	-	-	0.31	99.7	-	-	-	-	-

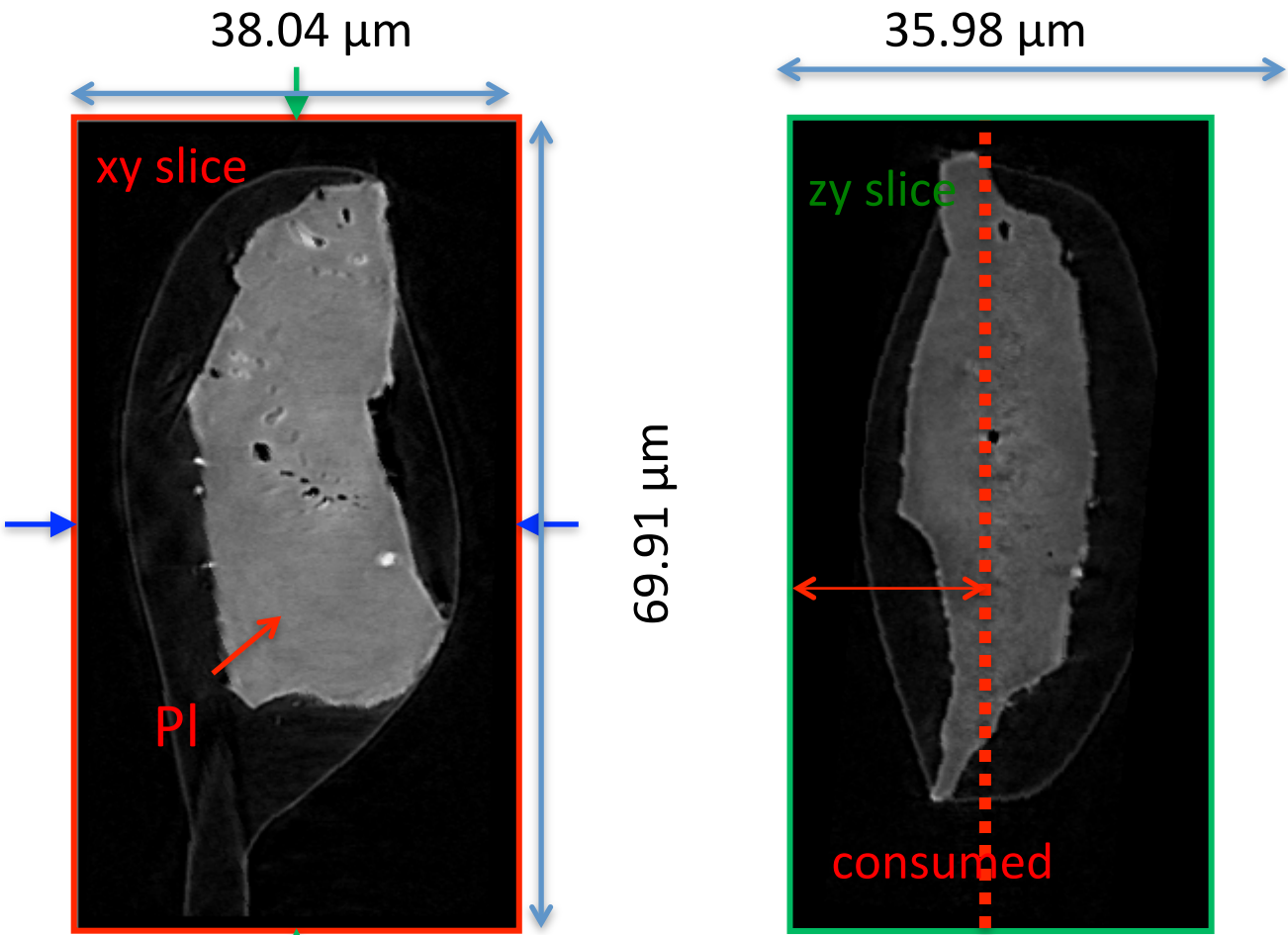
A (μm)	B (μm)	C (μm)	V (μm^3)	Porosity (%)
8.13	14.2	25.9	10301	2.63

Ol: olivine
LPx: low calcium pyroxene
HPx: high calcium pyroxene
Pl: plagioclase
Tr: troilite
Tae: taenite
Chm: chromite
CP: calcium phosphate
Kam: kamacite

A, B, and C: shortest, middle, and longest axial radii, respectively,
of a best-fit ellipsoid for the particle

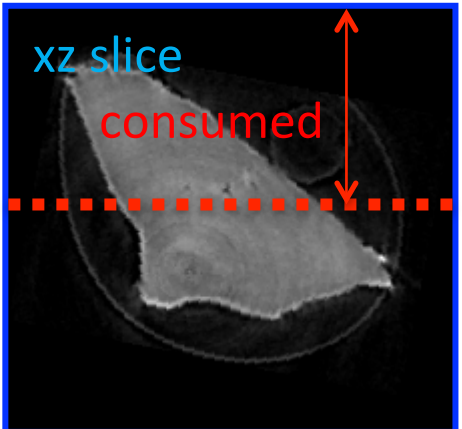
V: particle volume without pore
dz: CT image interval
LAC: linear attenuation coefficient of X-ray

RA-QD02-0025-01 7 keV

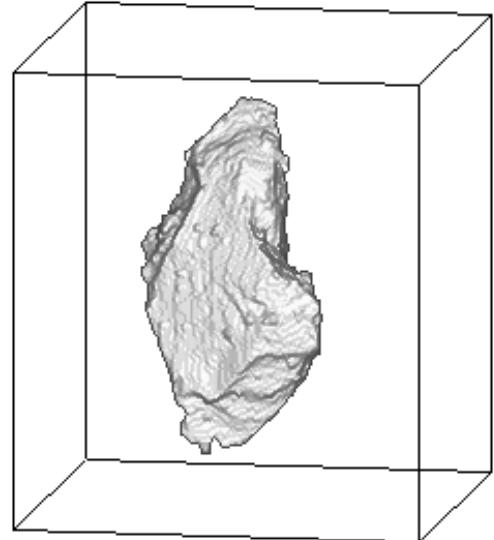


7keV/xy/098.tif

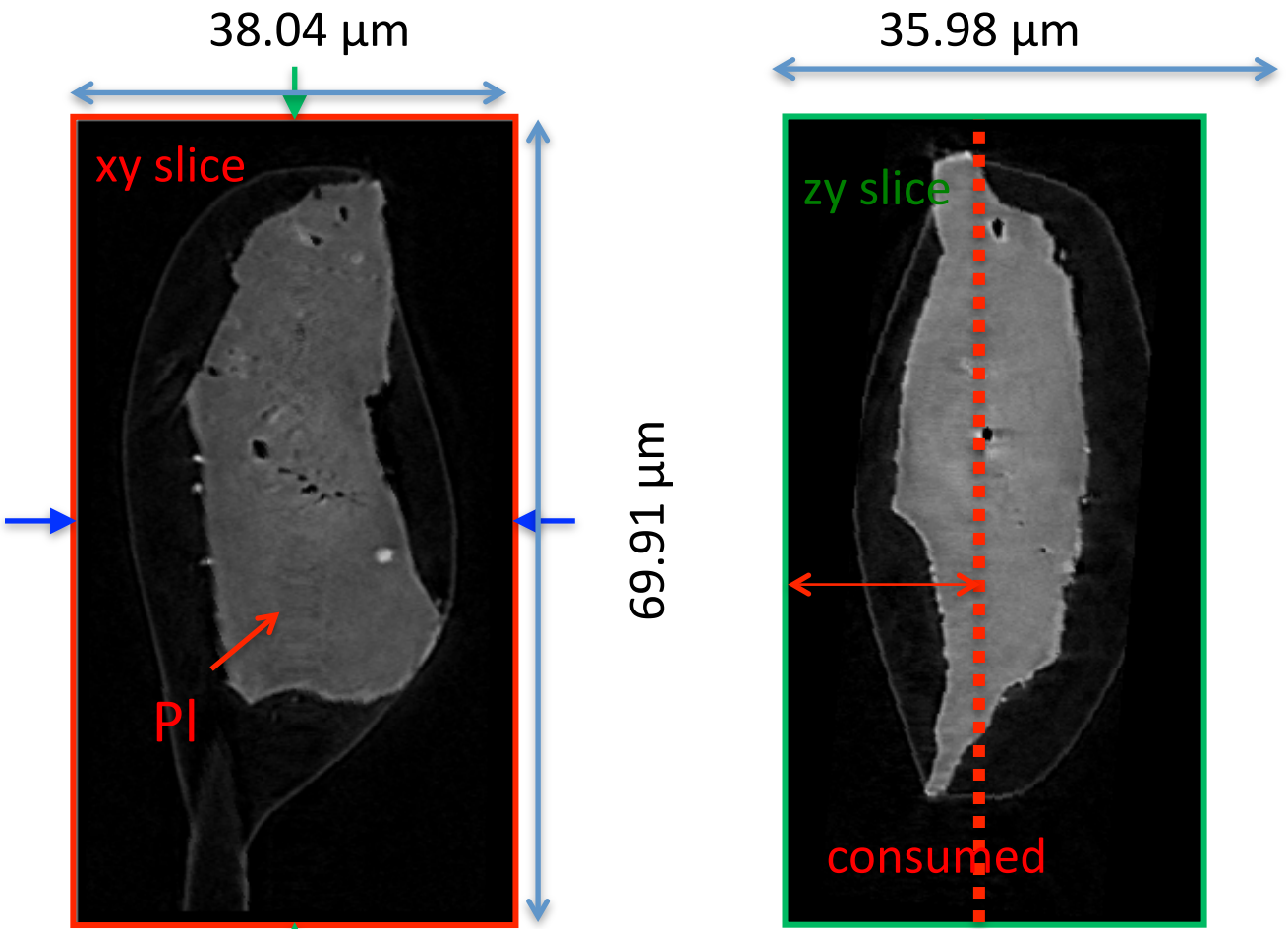
7keV/zy/111.tif



7keV/xz/204.tif

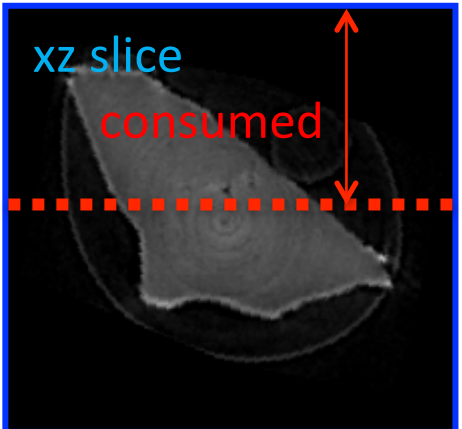


RA-QD02-0025-01 8 keV

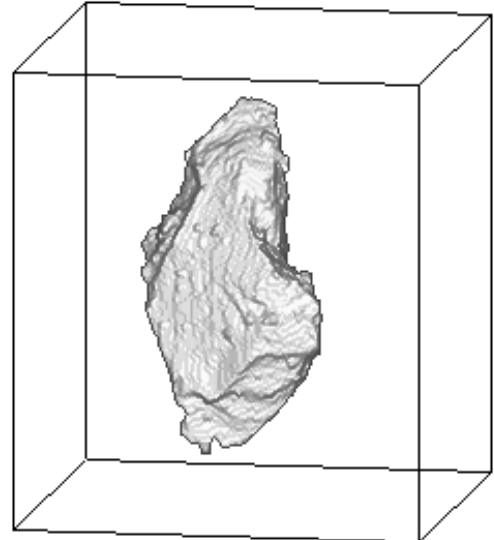


8keV/xy/098.tif

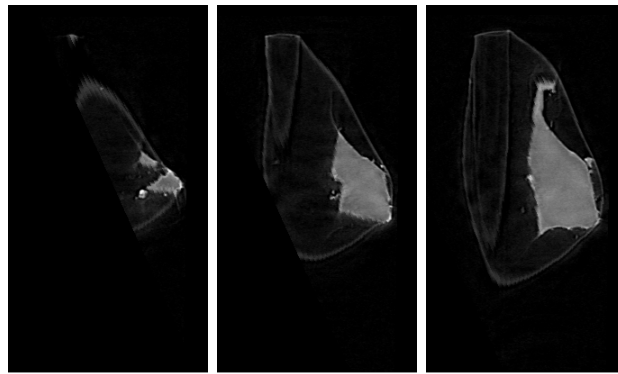
7keV/zy/111.tif



8keV/xz/204.tif



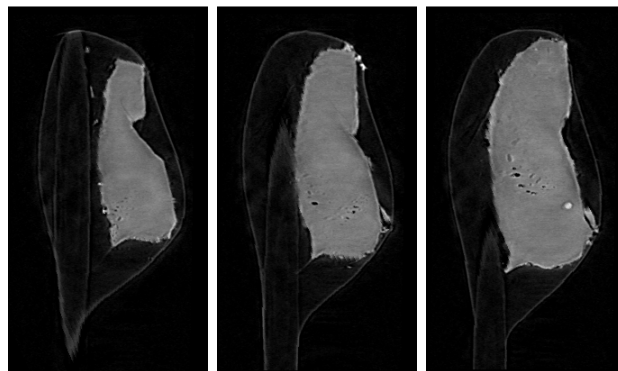
RA-QD02-0025-01 7 keV catalogue



031.tif

043.tif

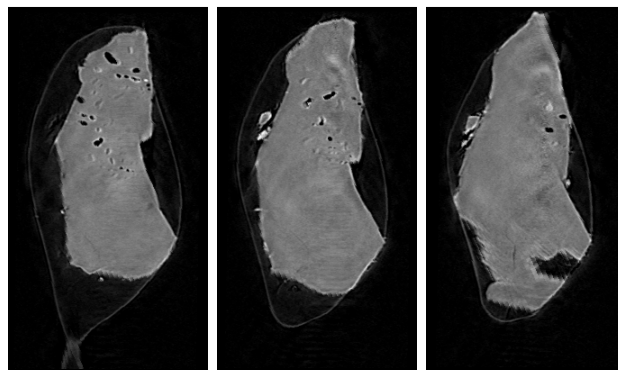
055.tif



067.tif

079.tif

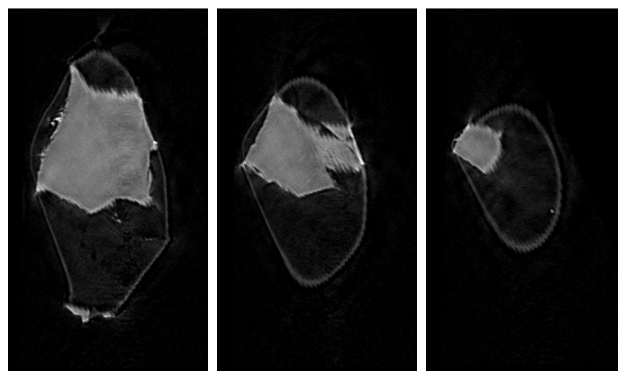
091.tif



103.tif

115.tif

127.tif



139.tif

151.tif

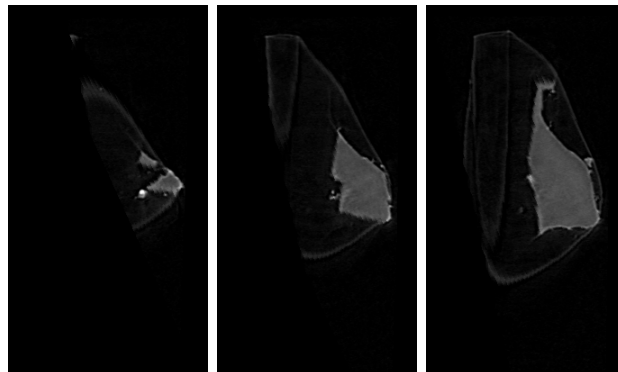
163.tif

dZ = 2.05608 um

21 um

287 cm-1 (LAC)

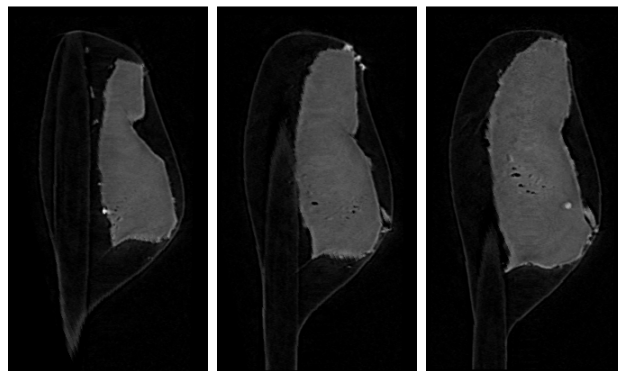
RA-QD02-0025-01 8 keV catalogue



031.tif

043.tif

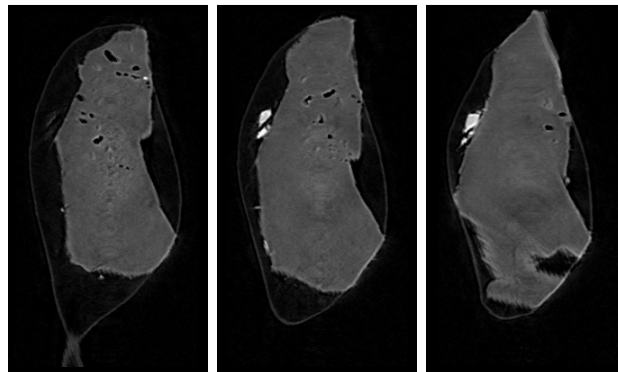
055.tif



067.tif

079.tif

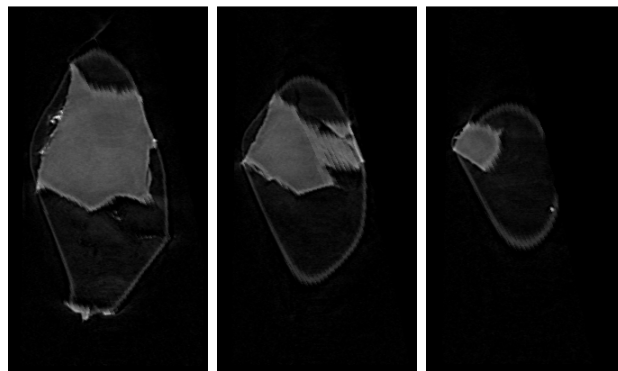
091.tif



103.tif

115.tif

127.tif



139.tif

151.tif

163.tif

dZ = 2.05608 um

21 um

287 cm-1 (LAC)

RA-QD02-0025-01 Dual energy histogram

