

## Sample Results Summary Sheet

Please return this form to the Curator for each allocated Sample

**Sample ID:** RA-QD02-0030

**PI:** Akira Tsuchiyama

**Type and date of analysis performed:**

Tomography     Jan/26/2011 (7 keV)

                       Jan/26/2011 (8 keV)

**Elements or phases identified:** (Mg, Si, olivine, pyroxene, aromatic carbon, etc.)

Mode	OI	LPx	HPx	PI	Tr	Tae	Chm	CP	Kam
Vol %	22.4	56.05	1.42	19.8	0.13	0.25	-	-	-

**Contaminant phases identified:** (Al, SUS, carbon particles, etc.)

N/A

**Sample handling:**

Exposed in atmosphere.

**State of sample pre-analysis:**

Attached to carbon fiber with resin.

**State of sample post-analysis:**

N<sub>2</sub> hold in sample holder.

**Analysis data Notes:** (summary of the attached analysis data and/or images)

See attached sheets.

# RA-QD02-0030

Operation Date Jan/26/2011 (7 keV)

Jan/26/2011 (8 keV)

operated by T. Nagano (7 keV)

T. Ogami (8 keV)

analyzed by J. Matsuno

Mode	Ol	LPx	HPx	Pl	Tr	Tae	Chm	CP	Kam
Vol %	22.4	56.05	1.42	19.8	0.13	0.25	-	-	-

A ( $\mu\text{m}$ )	B ( $\mu\text{m}$ )	C ( $\mu\text{m}$ )	V ( $\mu\text{m}^3$ )	Porosity (%)
35.0	75.0	81.9	760531	0.03

Ol: olivine

LPx: low calcium pyroxene

HPx: high calcium pyroxene

Pl: plagioclase

Tr: troilite

Tae: taenite

Chm: chromite

CP: calcium phosphate

Kam: kamacite

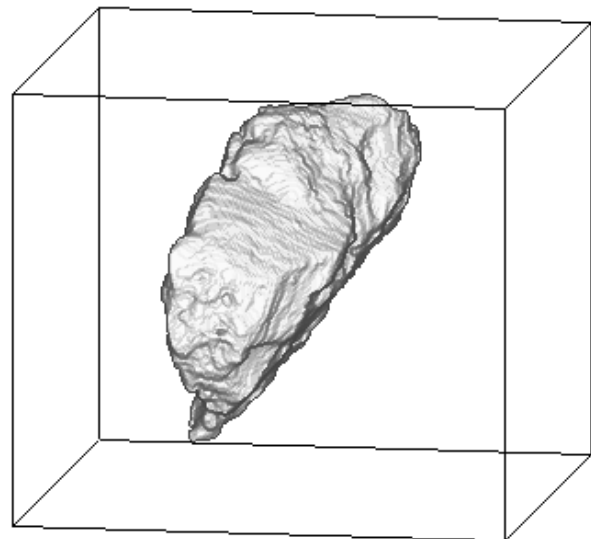
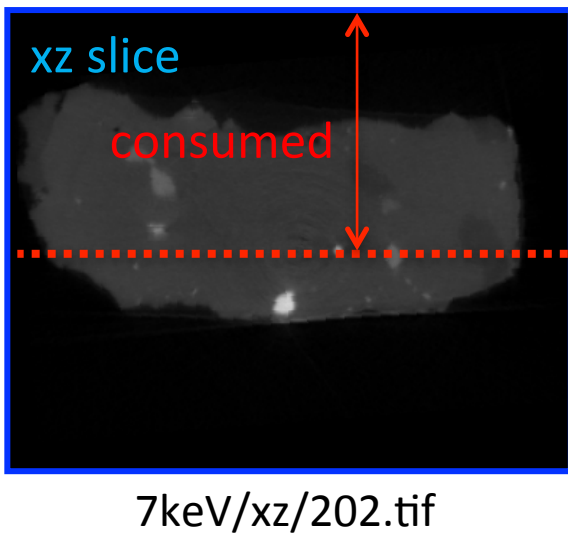
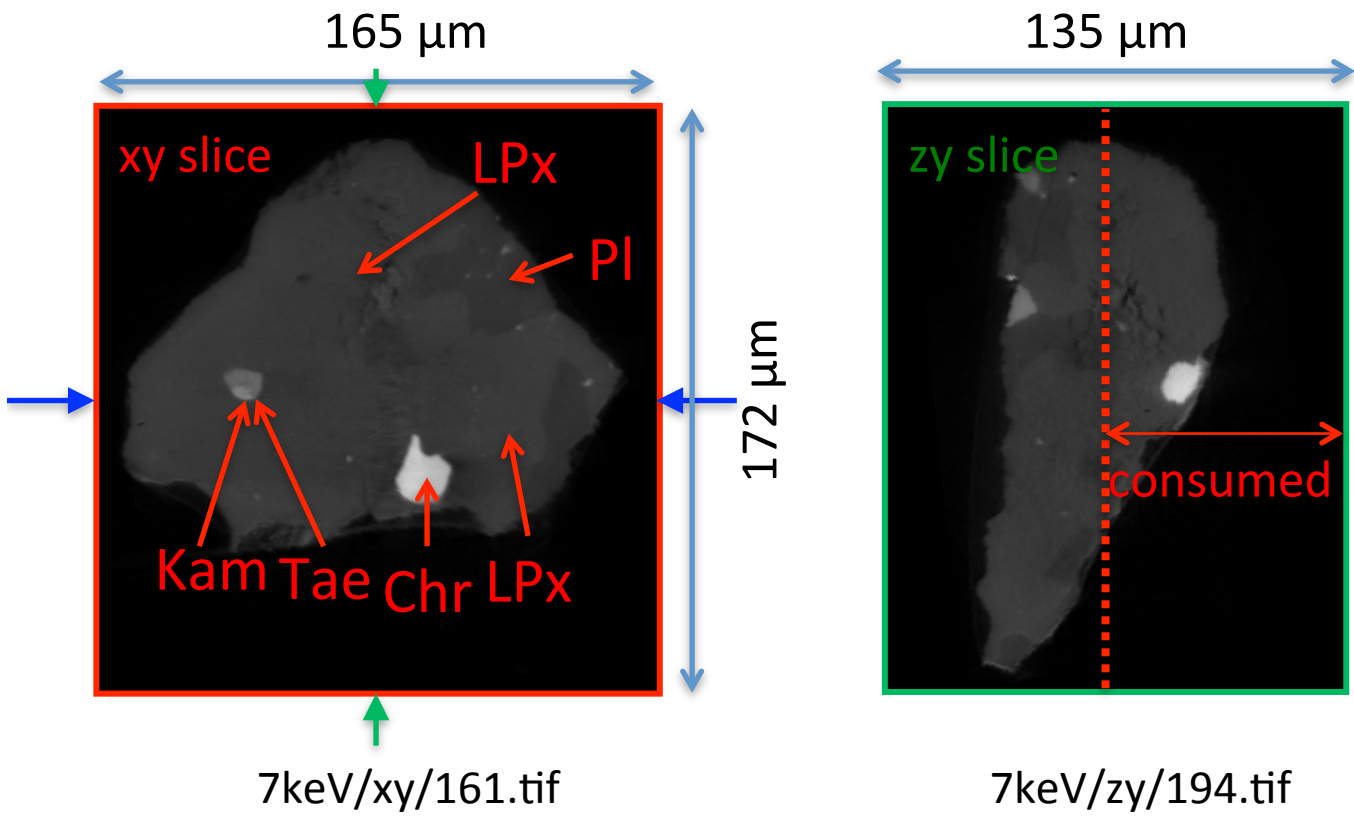
A, B, and C: shortest, middle, and longest axial radii, respectively,  
of a best-fit ellipsoid for the particle

V: particle volume without pore

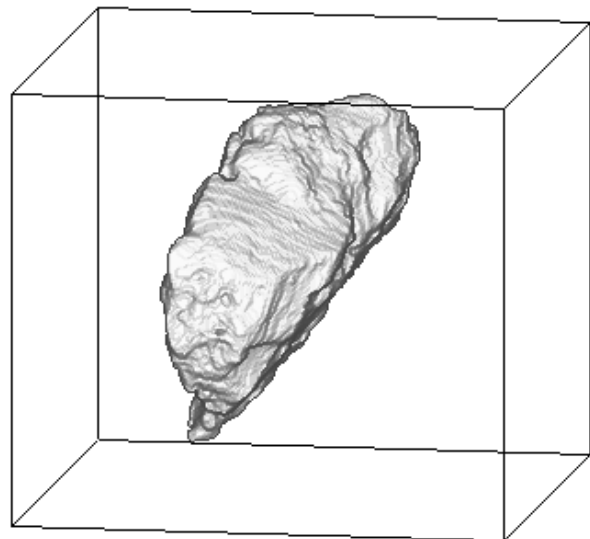
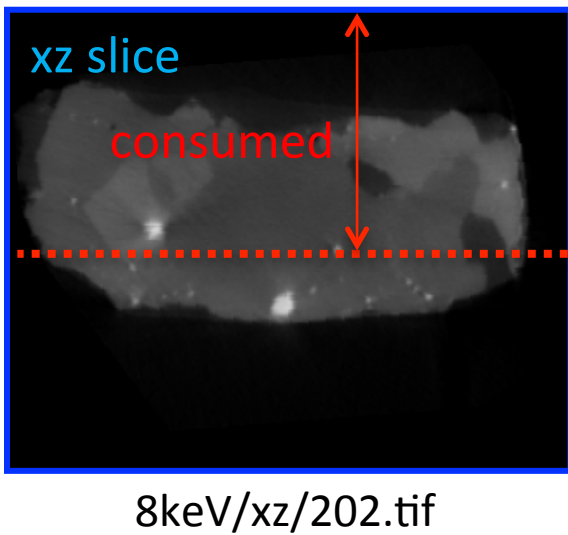
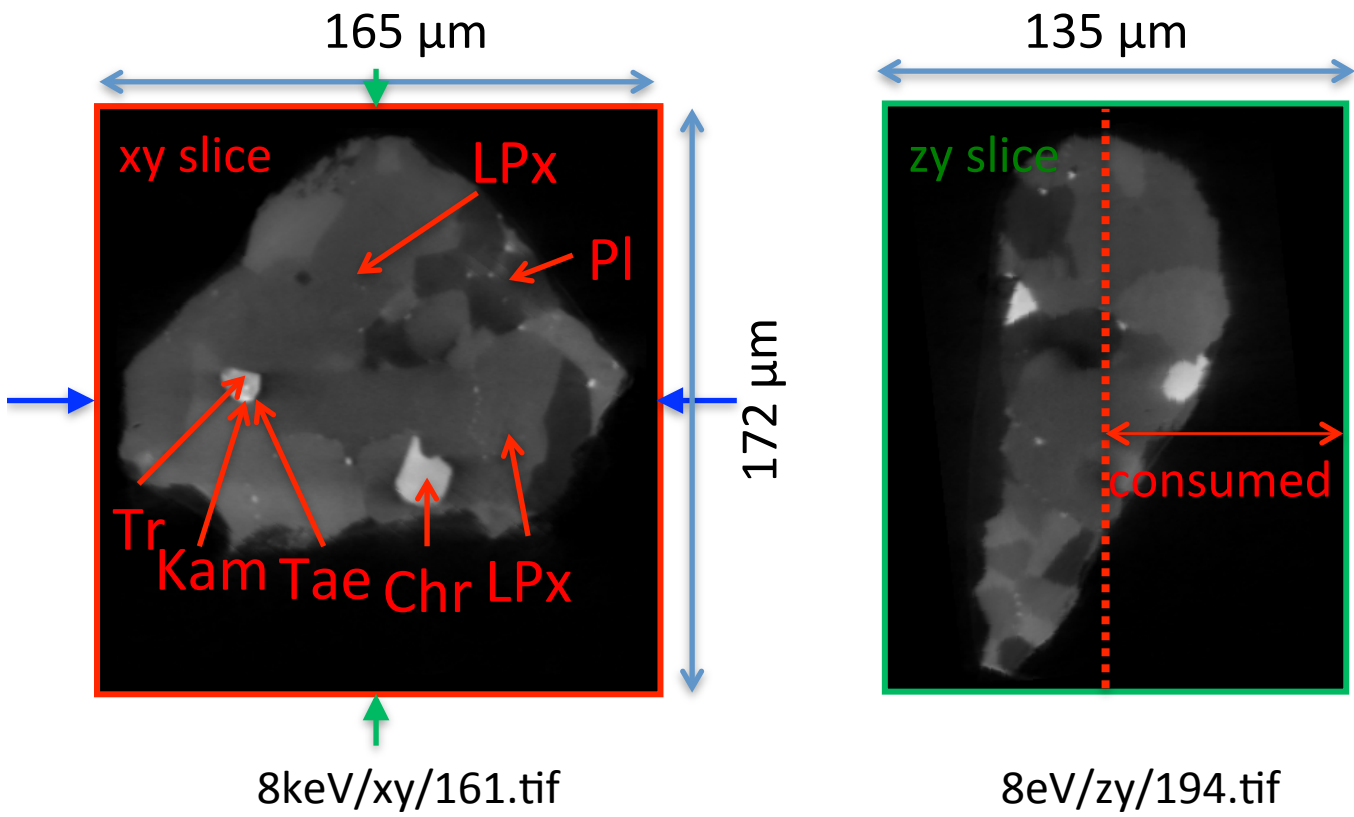
dz: CT image interval

LAC: linear attenuation coefficient of X-ray

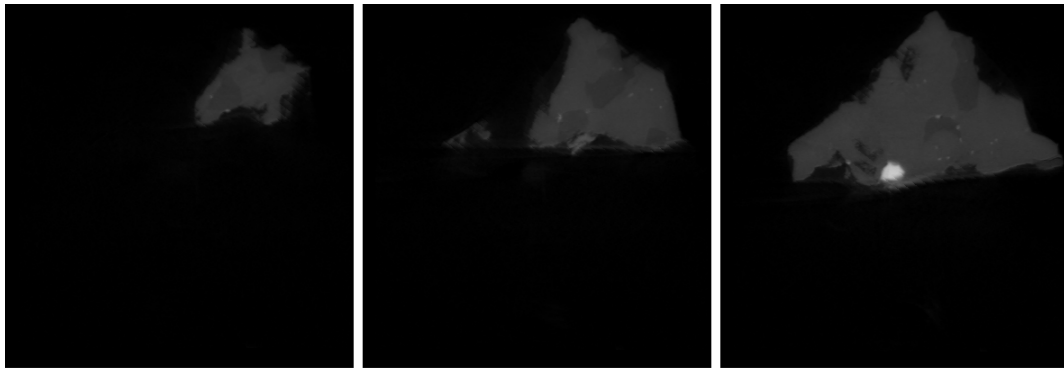
# RA-QD02-0030 7 keV



# RA-QD02-0030 8 keV



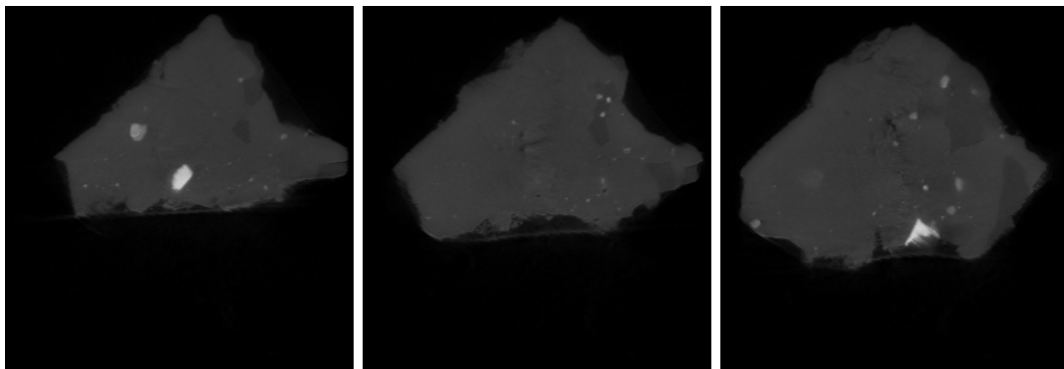
# RA-QD02-0030 7 keV catalogue



068.tif

085.tif

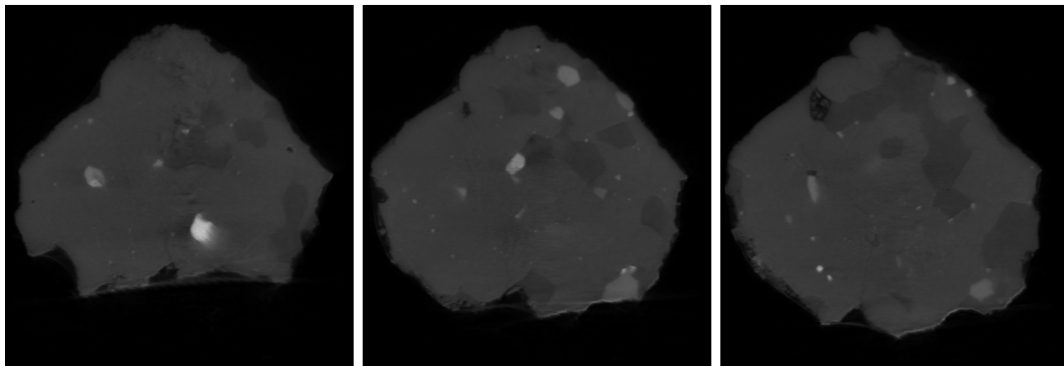
102.tif



119.tif

136.tif

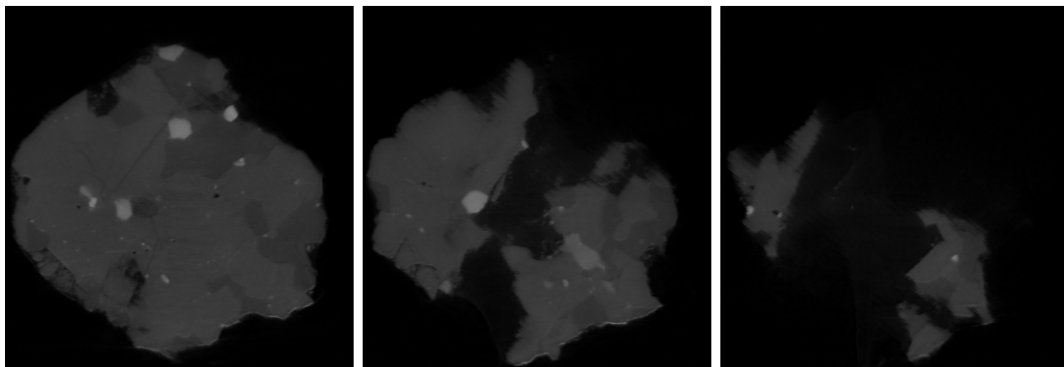
153.tif



170.tif

187.tif

204.tif

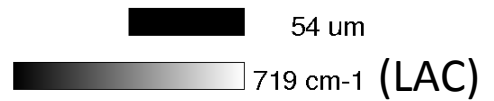


221.tif

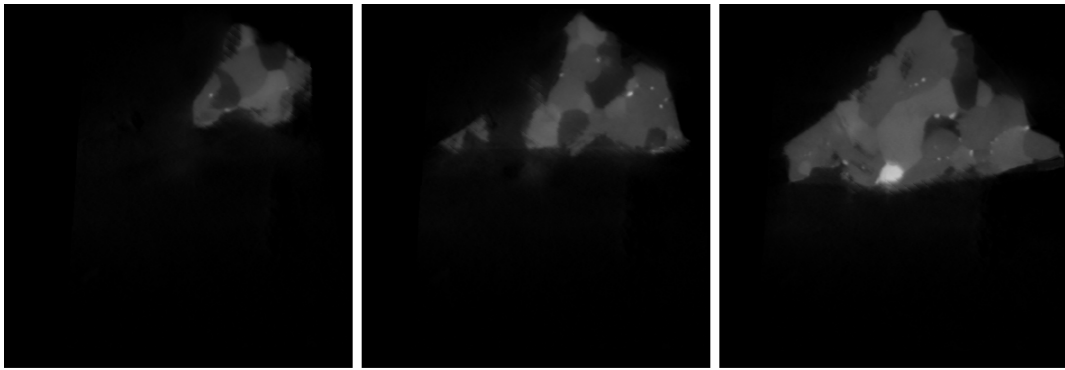
238.tif

255.tif

dZ = 7.242 um



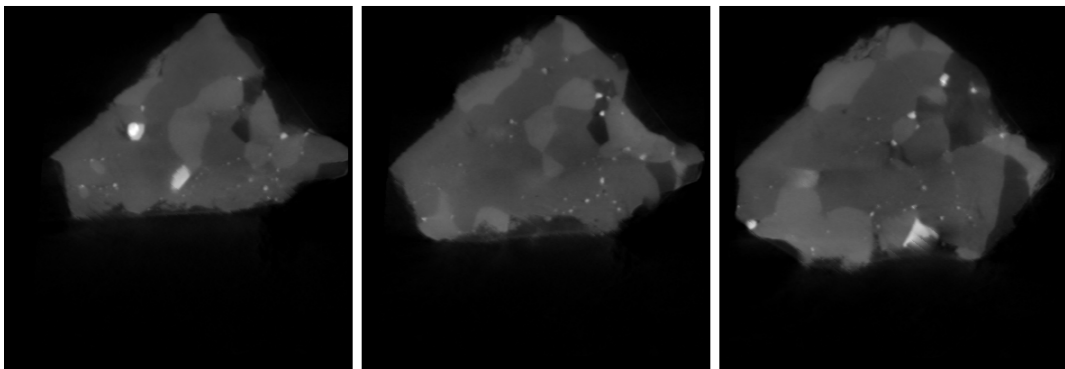
# RA-QD02-0030 8 keV catalogue



068.tif

085.tif

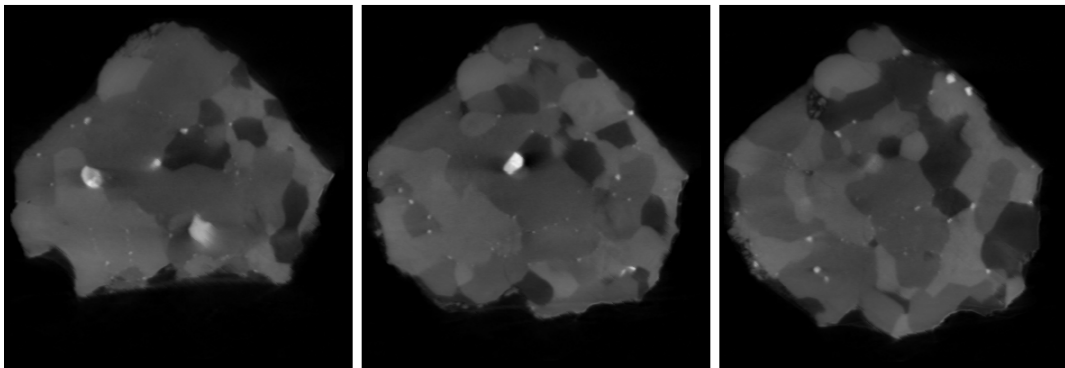
102.tif



119.tif

136.tif

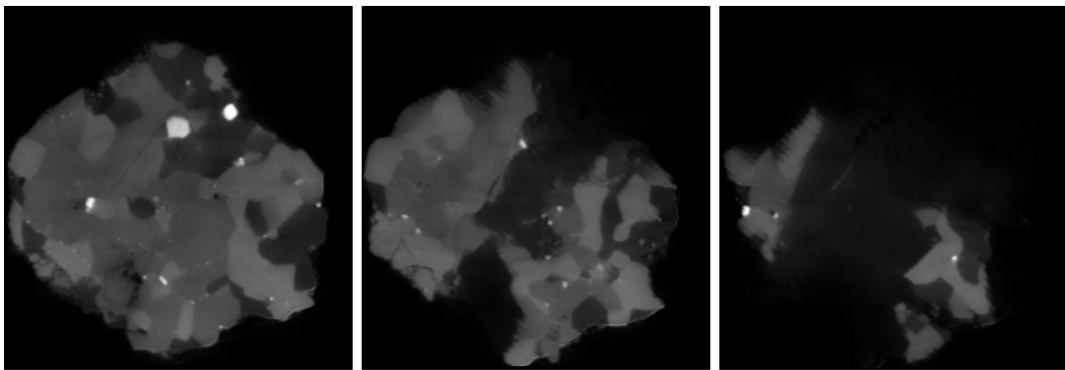
153.tif



170.tif

187.tif

204.tif



221.tif

238.tif

255.tif

dZ = 7.242 um



# RA-QD02-0030 Dual energy histogram

