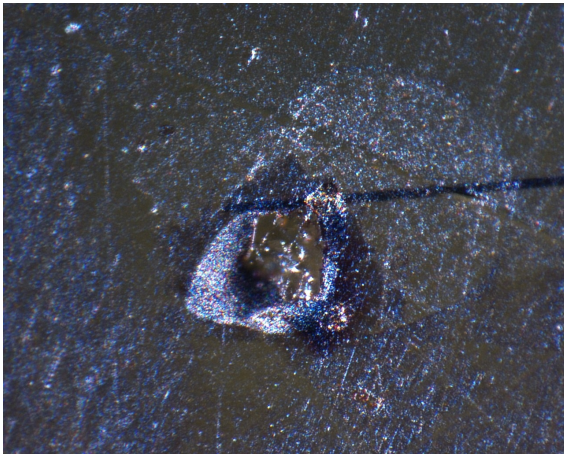


# RA-QD02-0043

| Status                                 | Date | Size | Transfer                  | Category | Phase                |
|--|------|------|---------------------------|----------|----------------------|
| Curation glovebox2, PS with large hole |      | 96μm | Curation N2-SP3,glovebox2 | 1        | [ ol, hpx, pl, FeS ] |



20120117/Initial\_Analyses\_returnSamplecheck/RA-QD02-0043x320.jpg

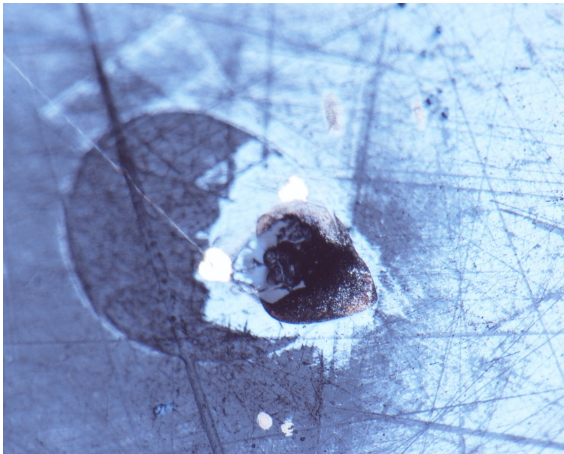
SAMPLE : RA-QD02-0043

PREID :

PROCESS : optical microscope observation

OPERATOR : Yada

COMMENT : condition of post initial analysis



20140512/returnSamplecheck/opt/15-RA-QD02-0043.jpg

SAMPLE : RA-QD02-0043

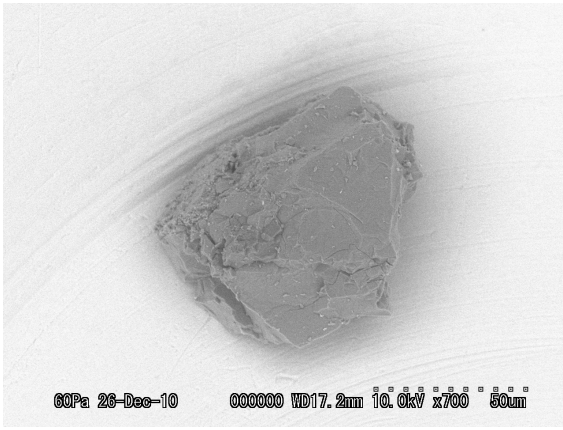
PREID :

PROCESS : sample check

OPERATOR : Yada, Uesugi

COMMENT : polished section with a SIMS hole

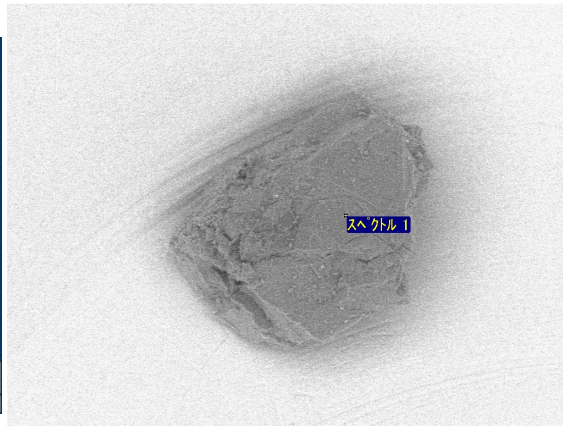
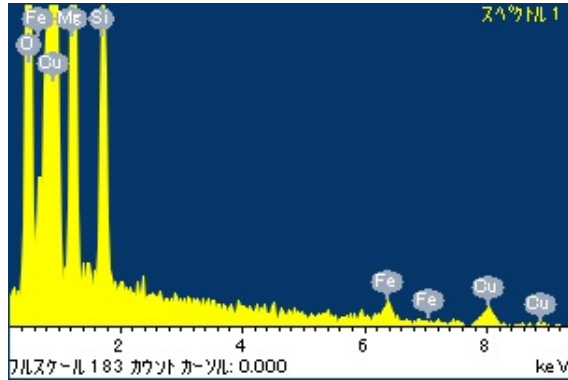
20101226/SEM/BSE/unid25\_01.bmp



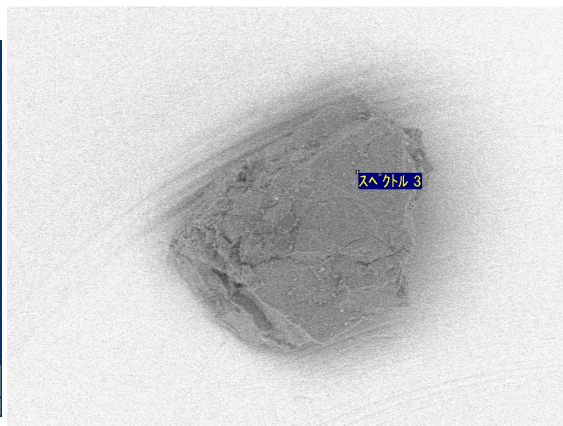
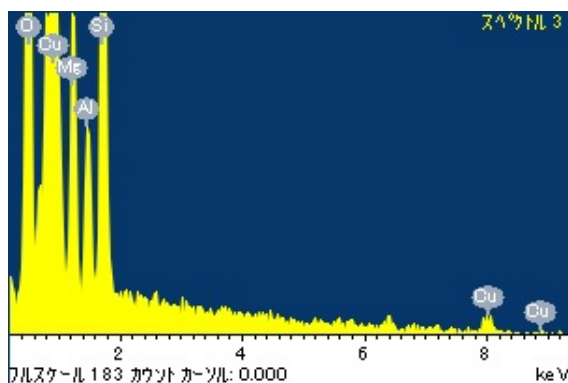
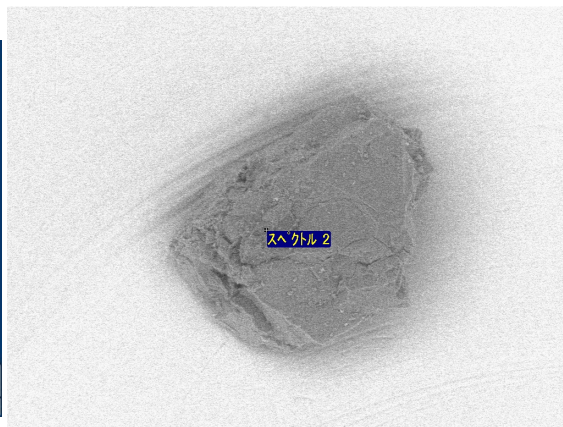
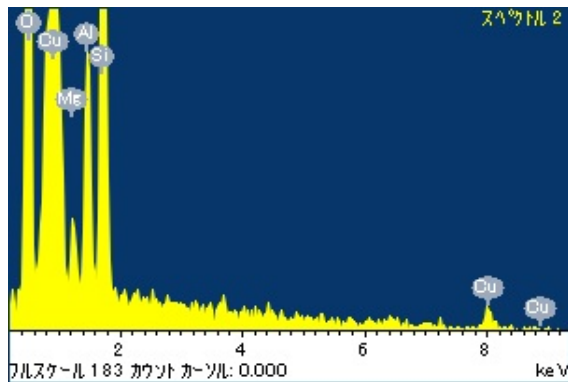
SAMPLE : RA-QD02-0043  
PREID :  
PROCESS :  
OPERATOR :  
COMMENT :

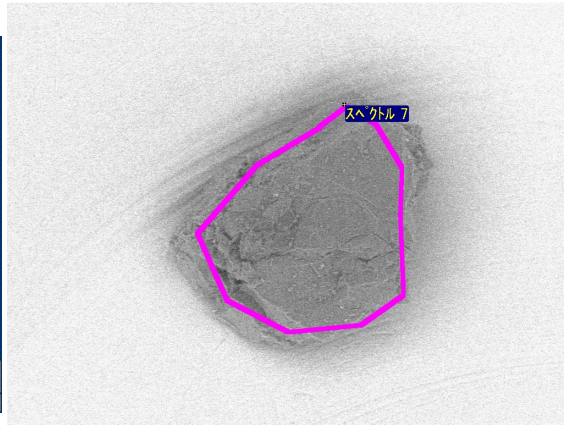
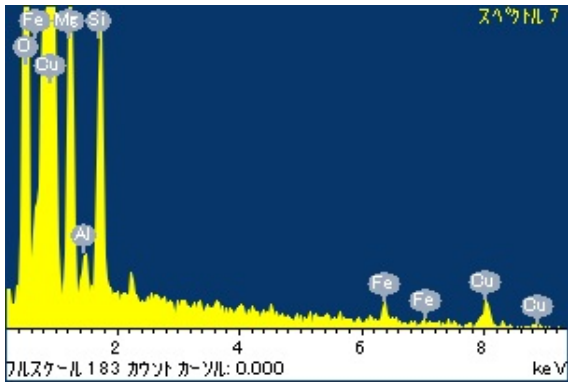
60Pa 26-Dec-10 000000 WD17.2mm 10.0kV x700 50um

20101226/SEM/EDS/RA-QD02-0043.docx



SAMPLE : RA-QD02-0043  
PREID :  
PROCESS :  
OPERATOR :  
COMMENT :





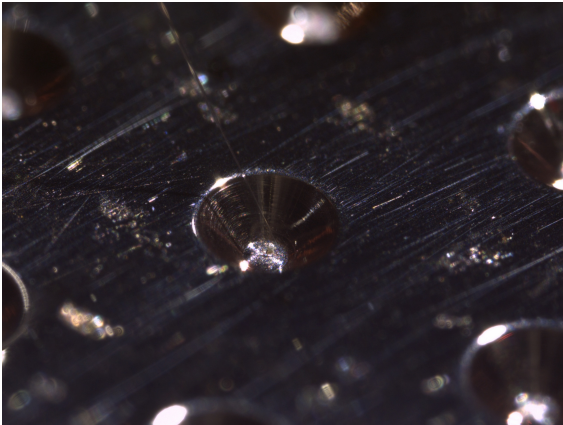
80 μm

電子顕微鏡像 1



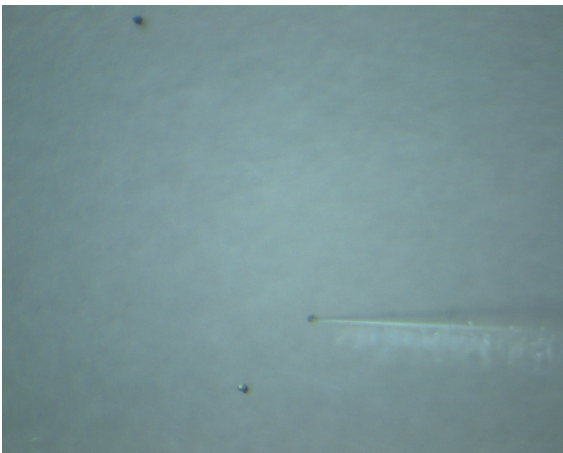
20101226/QD02toCuHolder\_toAu/nikon/20101226154114837.bmp

SAMPLE : RA-QD02-0043  
PREID :  
PROCESS : pick up from QD02  
OPERATOR : Nakamura  
COMMENT :



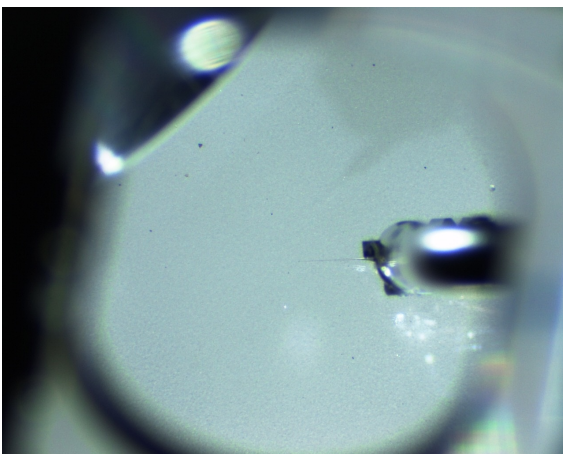
20101226/QD02toCuHolder\_toAu/nikon/20101226154724727.bmp

SAMPLE : RA-QD02-0043  
PREID :  
PROCESS : release to Cu SEM holder  
OPERATOR : Nakamura  
COMMENT :



20101226/QD02toCuHolder\_toAu/union/unid25Pic\_01.jpg

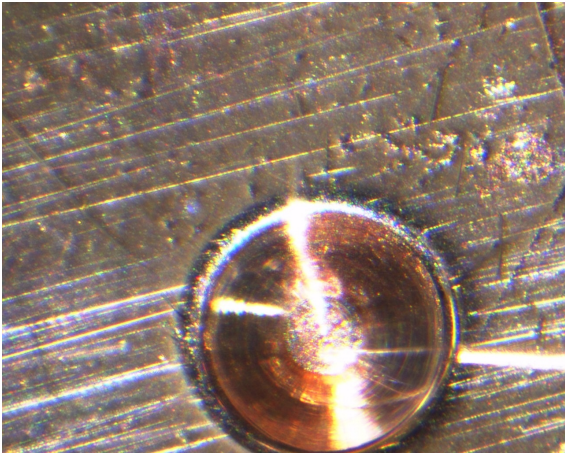
SAMPLE : RA-QD02-0043  
PREID :  
PROCESS : pick up from QD02  
OPERATOR : Nakamura  
COMMENT :



20101226/QD02toCuHolder\_toAu/union/unid25Pic\_02.jpg

SAMPLE : RA-QD02-0043  
PREID :  
PROCESS : pick up from QD02  
OPERATOR : Nakamura  
COMMENT :

20101226/QD02toCuHolder\_toAu/union/unid25ReleaseHOle14.jpg



SAMPLE : RA-QD02-0043  
PREID :  
PROCESS : release to Cu SEM holder  
OPERATOR : Nakamura  
COMMENT :

---