

Sample Results Summary Sheet

Please return this form to the Curator for each allocated Sample

Sample ID: RA-QD02-0043

PI: Hisayoshi Yurimoto

Type and date of analysis performed:

SIMS analysis of oxygen and Mg isotopes and trace elements, Feb 26 – Aug 31, 2011

Elements or phases identified: (Mg, Si, olivine, pyroxene, aromatic carbon, etc.)

Oxygen and Mg isotopes, trace elements

Contaminant phases identified: (Al, SUS, carbon particles, etc.)

None

Sample handling: (e.g. exposed in atmosphere, embedded in resin, polished, sliced by FIB or UMT)

exposed in atmosphere, Au sputter coating ~100nm

State of sample pre-analysis: (e.g. N2 hold, atmosphere, resin embedded, polished section, UTS) (please describe treatments and/or modifications for the sample you have done before your analysis)

exposed in atmosphere, Au sputter coating ~100nm

State of sample post-analysis:

(N2 hold in sample holder, atmosphere, resin embedded, polished section, UTS)

(partially damaged by electron beam, spotted by Ga beam, neutron activation)

(consumed by laser ablation)

(unexpected breakup, into # pieces)

(Lost : reason)

N2 hold in sample holder, partly consumed by Cs and 16O beam sputtering, Au coated.

Analysis data Notes: (summary of the attached analysis data and/or images)

O isotope, Al-Mg and trace element data of olivine in separate tables.

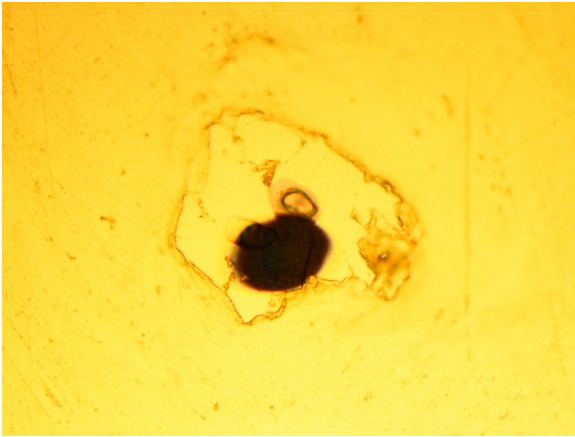


Image of post-analysis.

