

## Sample Results Summary Sheet

Please return this form to the Curator for each allocated Sample

**Sample ID:** RA-QD02-0047

**PI:** Hisayoshi Yurimoto

**Type and date of analysis performed:**

SIMS analysis of oxygen and magnesium isotopes, Feb 26 – Aug 31, 2011

**Elements or phases identified:** (Mg, Si, olivine, pyroxene, aromatic carbon, etc.)

Oxygen isotopes, Mg isotopes

**Contaminant phases identified:** (Al, SUS, carbon particles, etc.)

None

**Sample handling:** (e.g. exposed in atmosphere, embedded in resin, polished, sliced by FIB or UMT)

exposed in atmosphere, Au sputter coating ~100nm

**State of sample pre-analysis:** (e.g. N<sub>2</sub> hold, atmosphere, resin embedded, polished section, UTS) (please describe treatments and/or modifications for the sample you have done before your analysis)

exposed in atmosphere, Au sputter coating ~100nm

**State of sample post-analysis:**

(N<sub>2</sub> hold in sample holder, atmosphere, resin embedded, polished section, UTS)

(partially damaged by electron beam, spotted by Ga beam, neutron activation)

(consumed by laser ablation)

(unexpected breakup, into # pieces)

(Lost : reason)

N<sub>2</sub> hold in sample holder, partly consumed by Cs and <sup>16</sup>O beam sputtering, Au coated.

**Analysis data Notes:** (summary of the attached analysis data and/or images)

O isotope and Al-Mg data of olivine in separate tables.

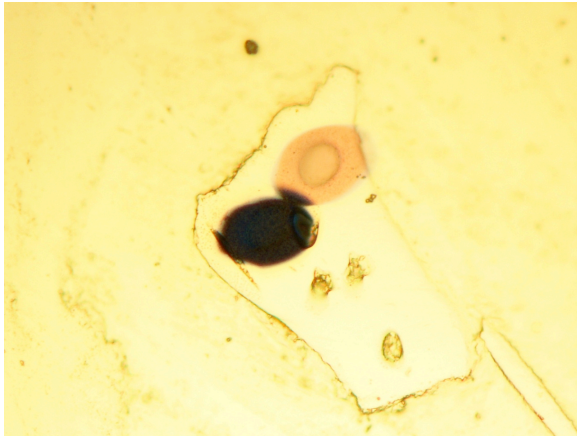


Image of post-analysis.

