

## Sample Results Summary Sheet

Please return this form to the Curator for each allocated Sample

**Sample ID:** RA-QD02-0048

**PI:** Akira Tsuchiyama

**Type and date of analysis performed:**

Tomography    Jan/23/2011 (7 keV)

                  Jan/24/2011 (8 keV)

**Elements or phases identified:** (Mg, Si, olivine, pyroxene, aromatic carbon, etc.)

Mode	OI	LPx	HPx	PI	Tr	Tae	Chm	CP	Kam
Vol %	68.9	2.47	10.3	18.2	0.11				

**Contaminant phases identified:** (Al, SUS, carbon particles, etc.)

N/A

**Sample handling:**

Exposed in atmosphere.

**State of sample pre-analysis:**

Attached to carbon fiber with resin.

**State of sample post-analysis:**

N<sub>2</sub> hold in sample holder.

**Analysis data Notes:** (summary of the attached analysis data and/or images)

See attached sheets.

# RA-QD02-0048

Operation Date    Jan/23/2011 ( 7keV)  
                          Jan/24/2011 ( 8keV)  
operated by        T. Matsumoto ( 7keV)  
                          T. Matsumoto ( 8keV)  
analyzed by        T. Nagano

Mode	Ol	LPx	HPx	Pl	Tr	Tae	Chm	CP	Kam
Vol %	68.9	2.47	10.3	18.2	0.11				

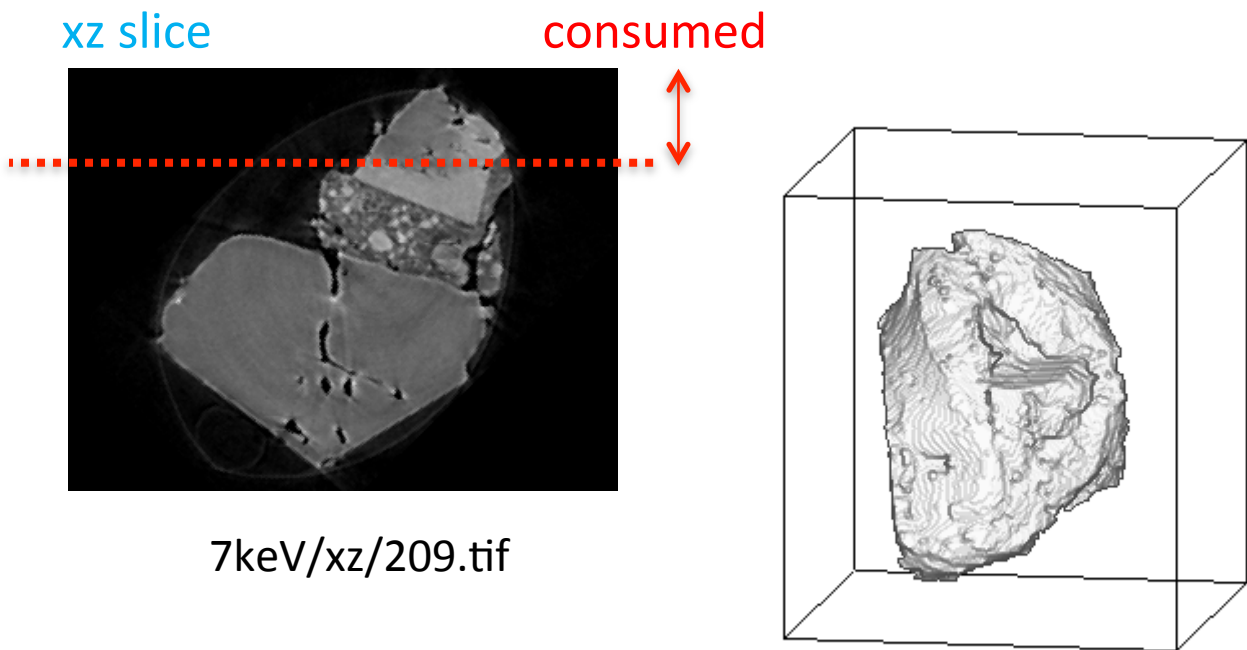
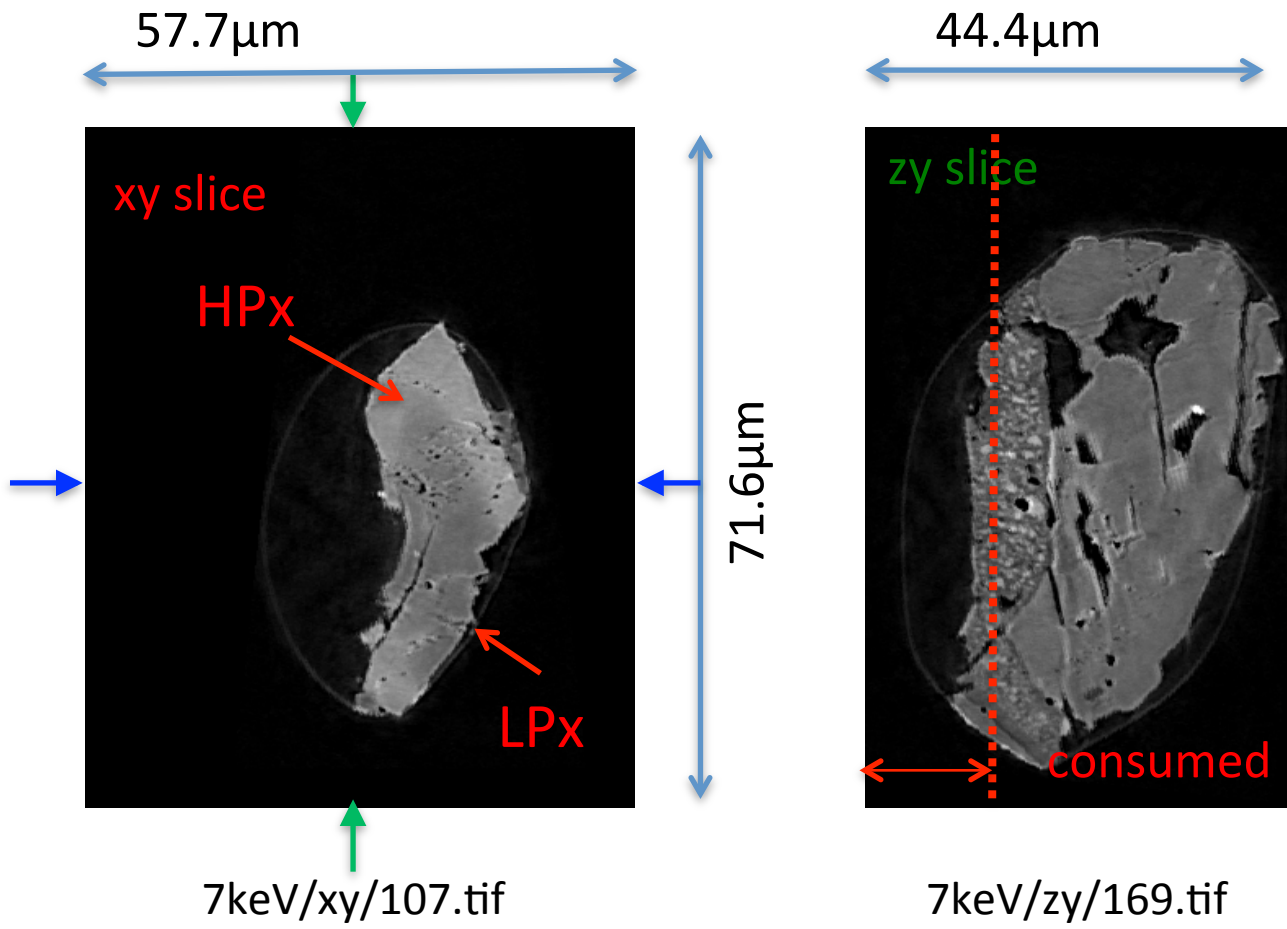
A ( $\mu\text{m}$ )	B ( $\mu\text{m}$ )	C ( $\mu\text{m}$ )	V ( $\mu\text{m}^3$ )	Porosity (%)
13.7	21.8	28.8	29185	6.03

Ol: olivine  
LPx: low calcium pyroxene  
HPx: high calcium pyroxene  
Pl: plagioclase  
Tr: troilite  
Tae: taenite  
Chm: chromite  
CP: calcium phosphate  
Kam: kamacite

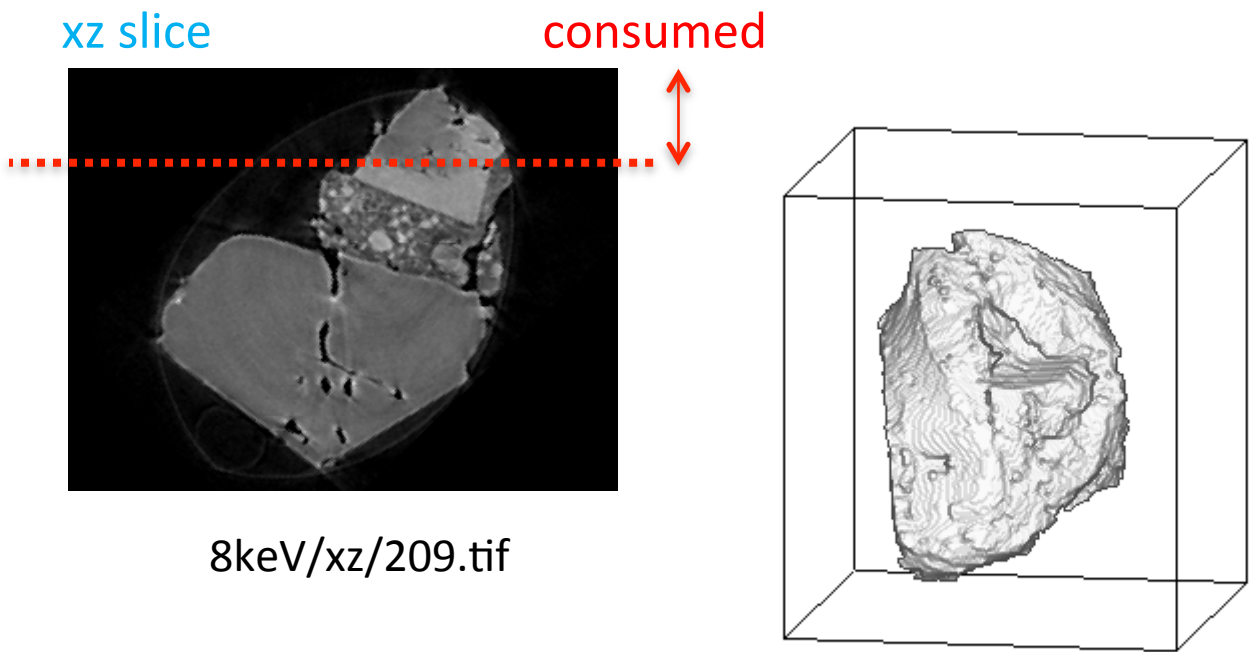
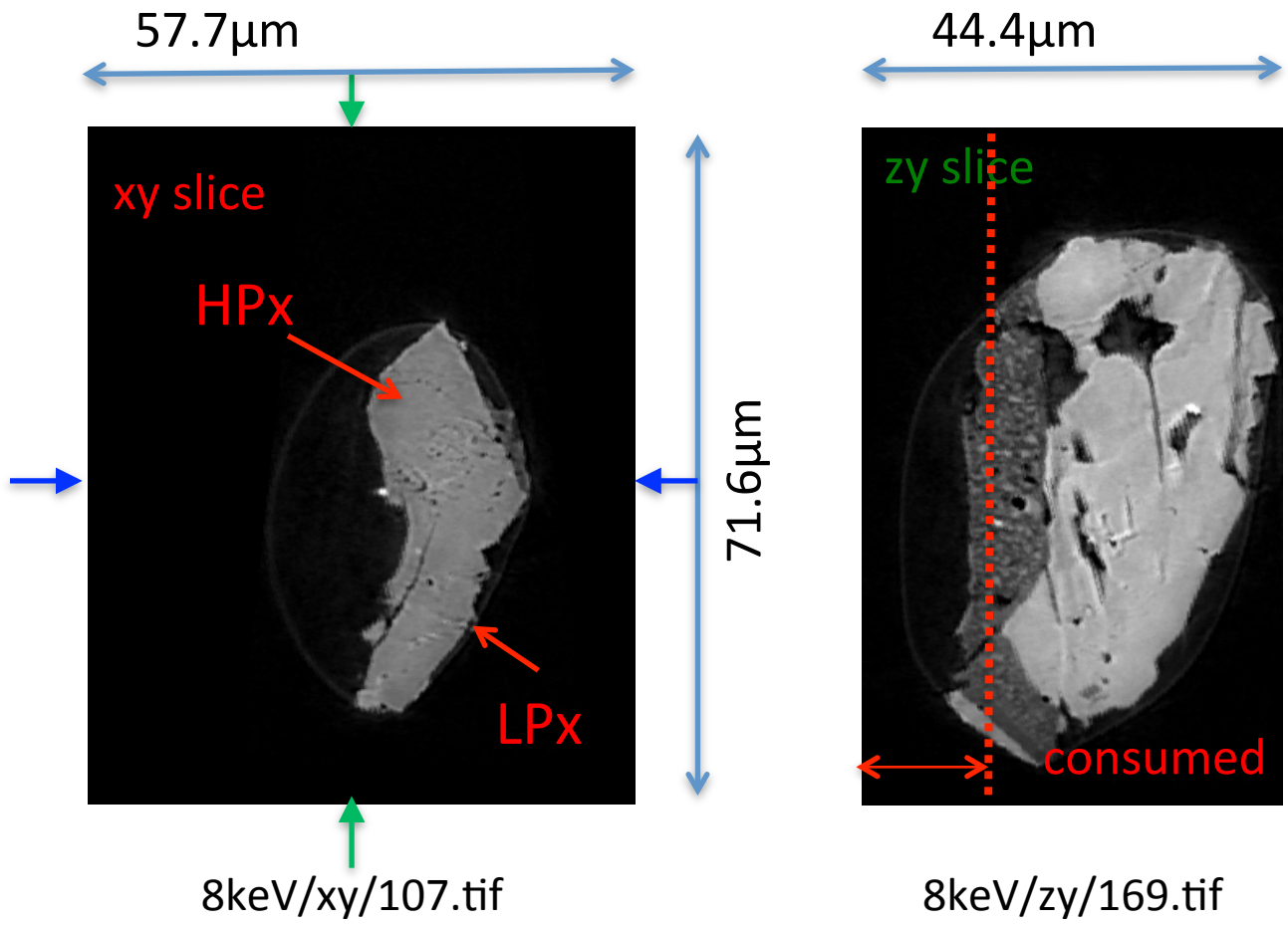
A, B, and C: shortest, middle, and longest axial radii, respectively,  
of a best-fit ellipsoid for the particle

V: particle volume without pore  
dz: CT image interval  
LAC: linear attenuation coefficient of X-ray

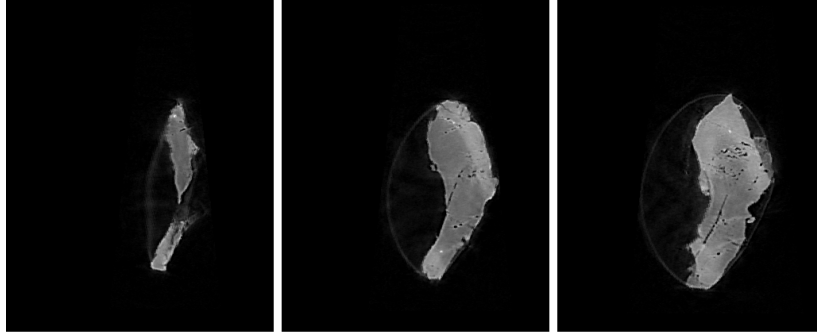
# RA-QD02-0048 7keV



# RA-QD02-0048 8keV



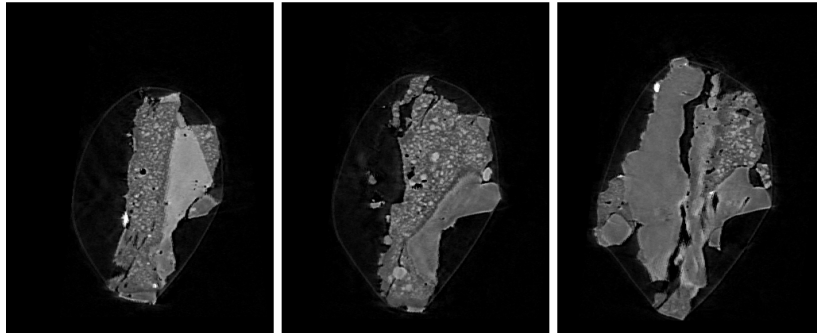
# RA-QD02-0048 7keV catalogue



070.tif

090.tif

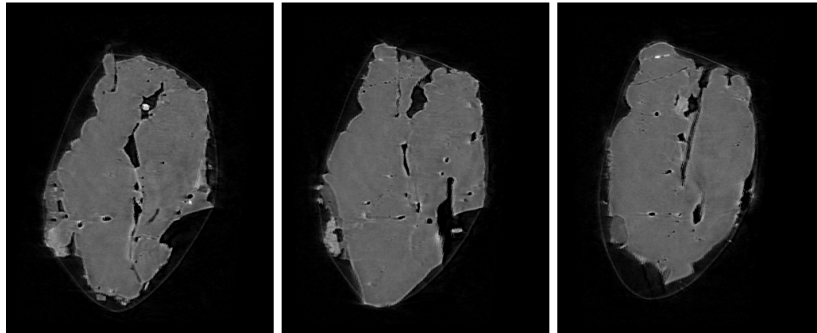
110.tif



130.tif

150.tif

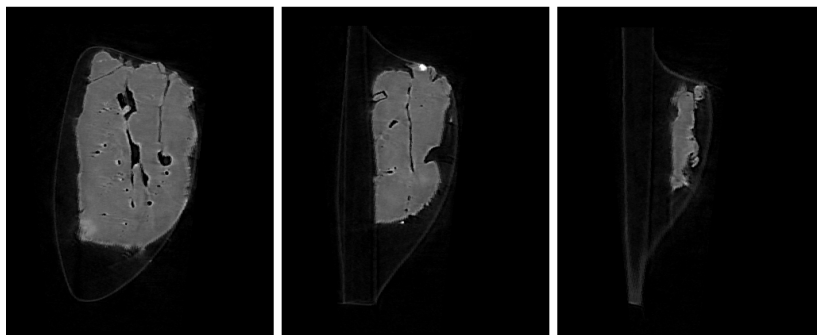
170.tif



190.tif

210.tif

230.tif

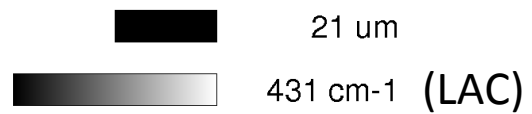


250.tif

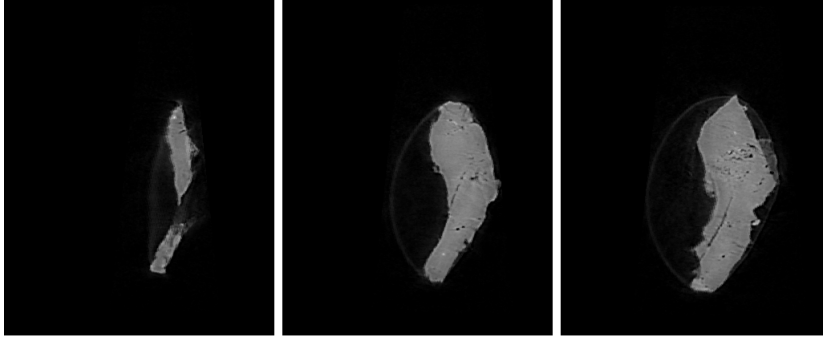
270.tif

290.tif

dZ = 3.42680 um



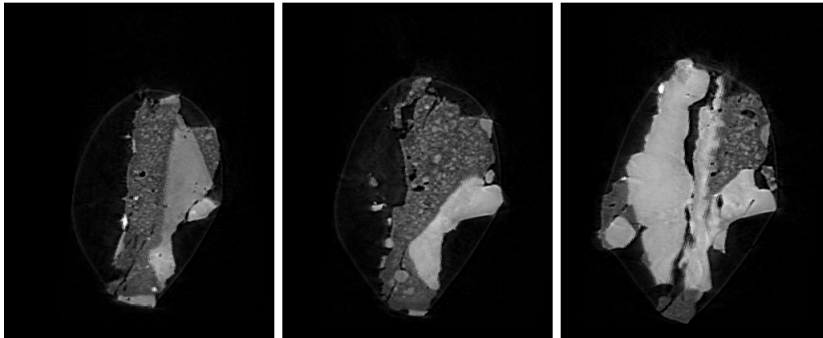
# RA-QD02-0048 8keV catalogue



070.tif

090.tif

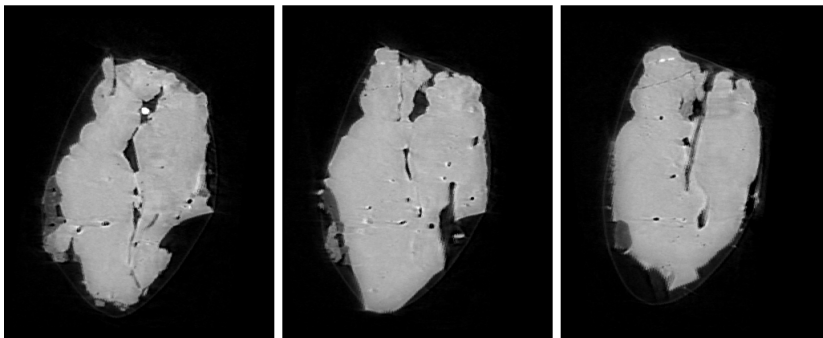
110.tif



130.tif

150.tif

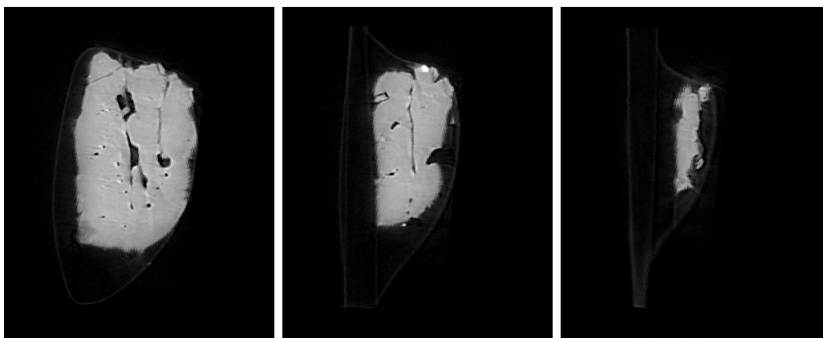
170.tif



190.tif

210.tif

230.tif

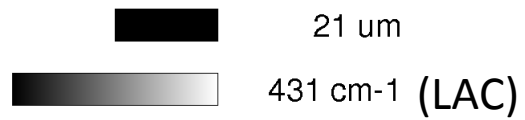


250.tif

270.tif

290.tif

dZ = 3.42680 um



# RA-QD02-0048 Dual energy histogram

