

Sample Results Summary Sheet

Please return this form to the Curator for each allocated Sample

Sample ID: RA-QD02-0058

PI: Akira Tsuchiyama

Type and date of analysis performed:

Tomography Jan/23/2011 (7 keV)

 Jan/24/2011 (8 keV)

Elements or phases identified: (Mg, Si, olivine, pyroxene, aromatic carbon, etc.)

Mode	OI	LPx	HPx	PI	Tr	Tae	Chm	CP	Kam
Vol %	68.5	6.95	4.41	20	-	-	-	-	-

Contaminant phases identified: (Al, SUS, carbon particles, etc.)

N/A

Sample handling:

Exposed in atmosphere.

State of sample pre-analysis:

Attached to carbon fiber with resin.

State of sample post-analysis:

N₂ hold in sample holder.

Analysis data Notes: (summary of the attached analysis data and/or images)

See attached sheets.

RA-QD02-0058

Operation Date Jan/23/2011 (7 keV)
Jan/24/2011 (8 keV)
operated by T. Matsumoto (7 keV)
Y. Ogami (8 keV)
analyzed by A. Shimada

Mode	Ol	LPx	HPx	Pl	Tr	Tae	Chm	CP	Kam
Vol %	68.5	6.95	4.41	20.0	-	-	-	-	-

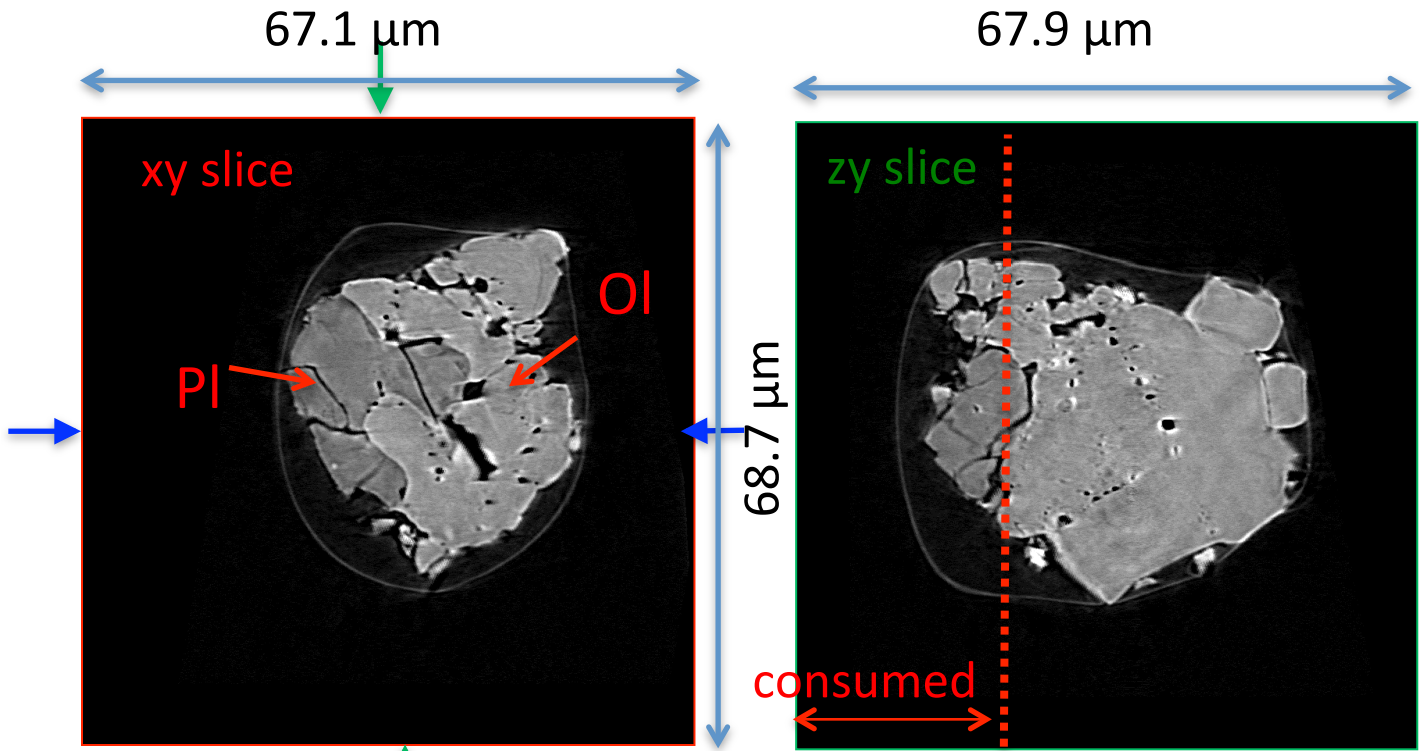
A (μm)	B (μm)	C (μm)	V (μm^3)	Porosity (%)
13.8	19.5	26.7	25584	7.21

Ol: olivine
LPx: low calcium pyroxene
HPx: high calcium pyroxene
Pl: plagioclase
Tr: troilite
Tae: taenite
Chm: chromite
CP: calcium phosphate
Kam: kamacite

A, B, and C: shortest, middle, and longest axial radii, respectively,
of a best-fit ellipsoid for the particle

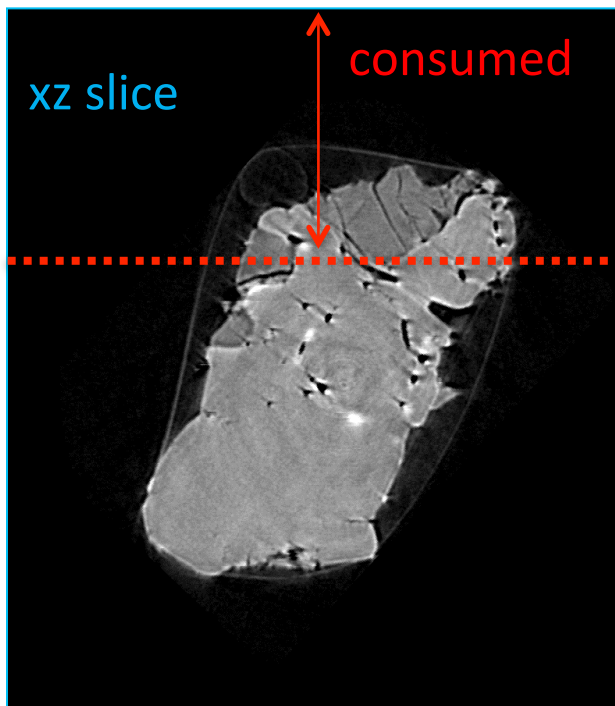
V: particle volume without pore
dz: CT image interval
LAC: linear attenuation coefficient of X-ray

RA-QD02-0058 7 keV

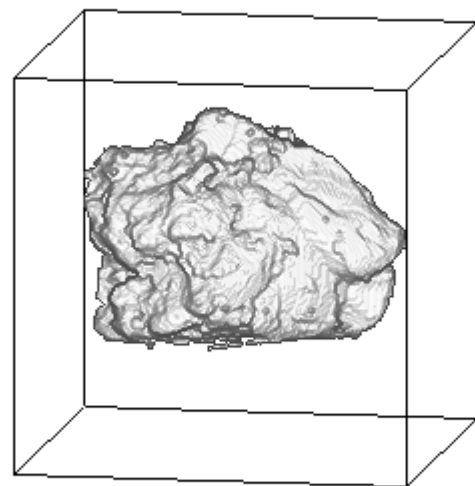


7keV/xy/342.tif

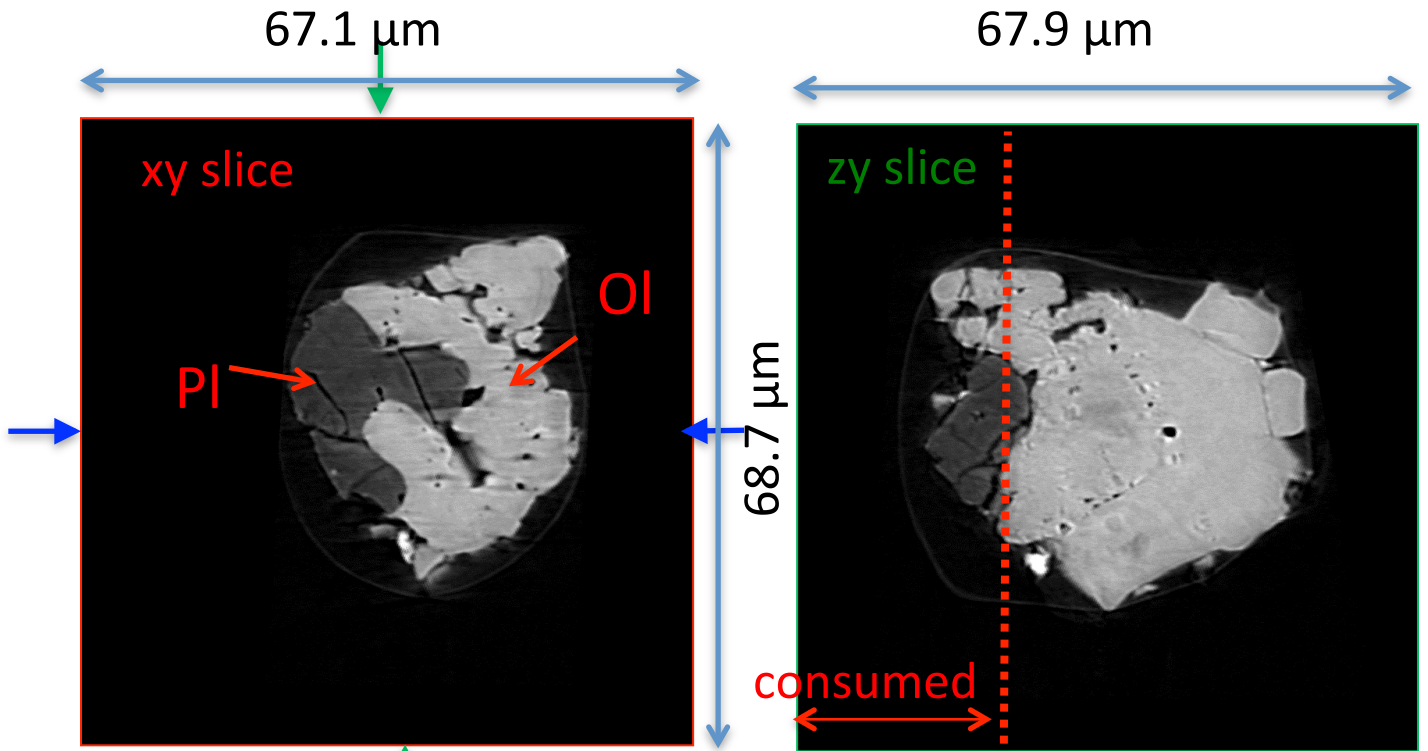
7keV/zy/392.tif



7keV/xz/401.tif

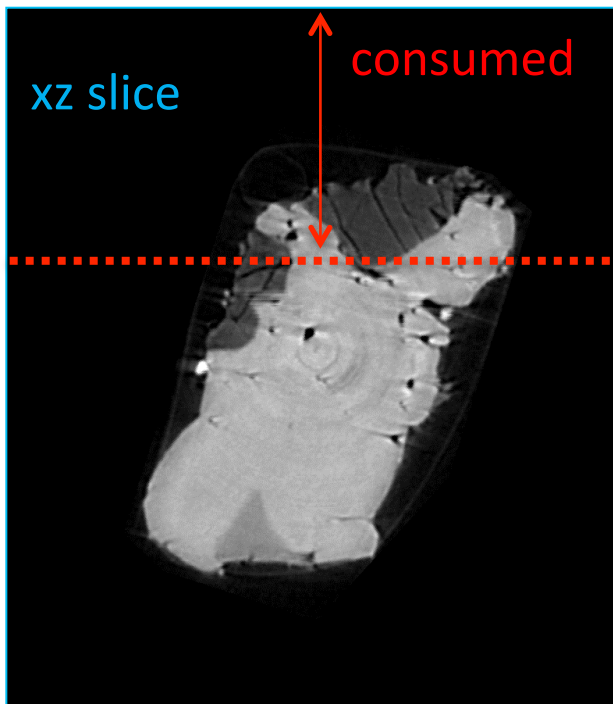


RA-QD02-0058 8 keV

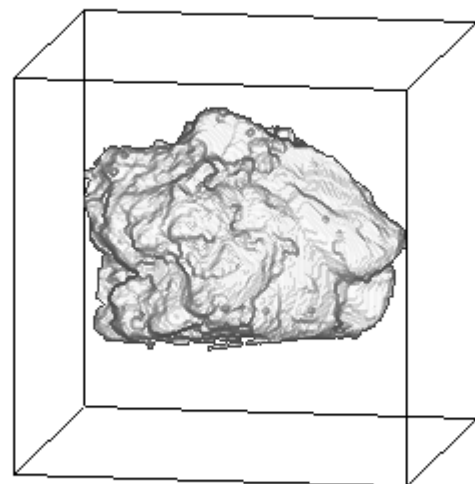


8keV/xy/342.tif

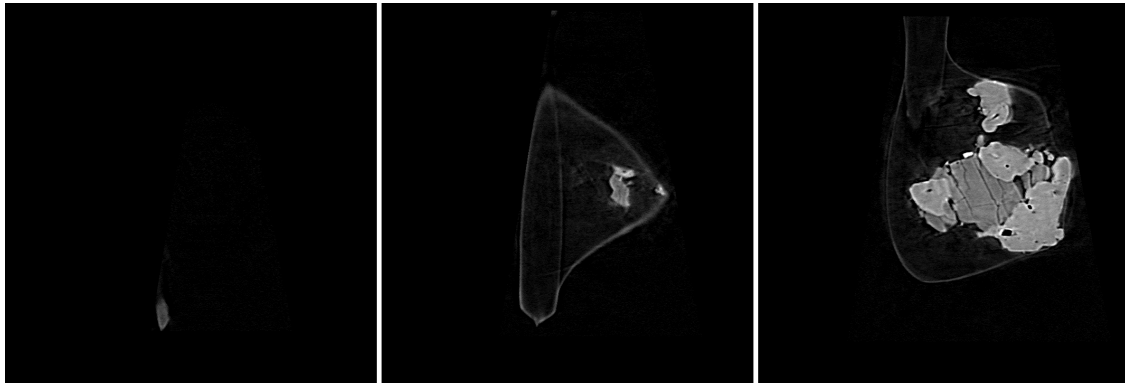
8keV/zy/392.tif



8keV/xz/401.tif



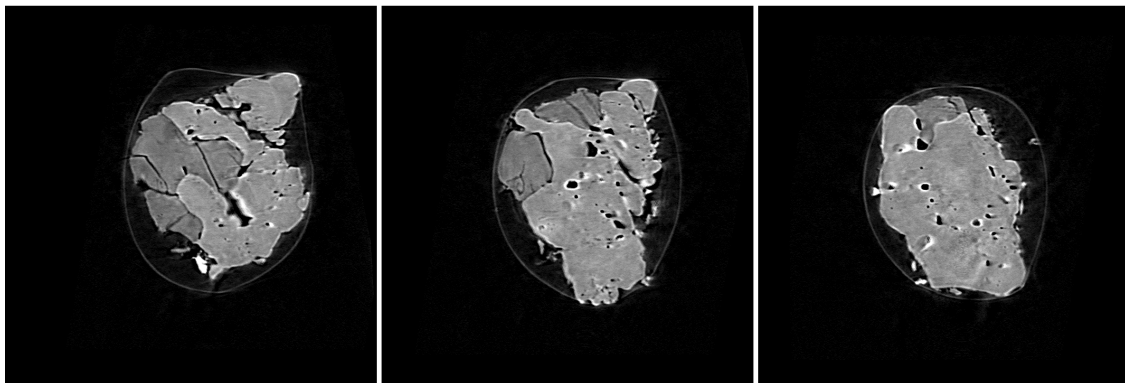
RA-QD02-0058 7 keV catalogue



147.tif

210.tif

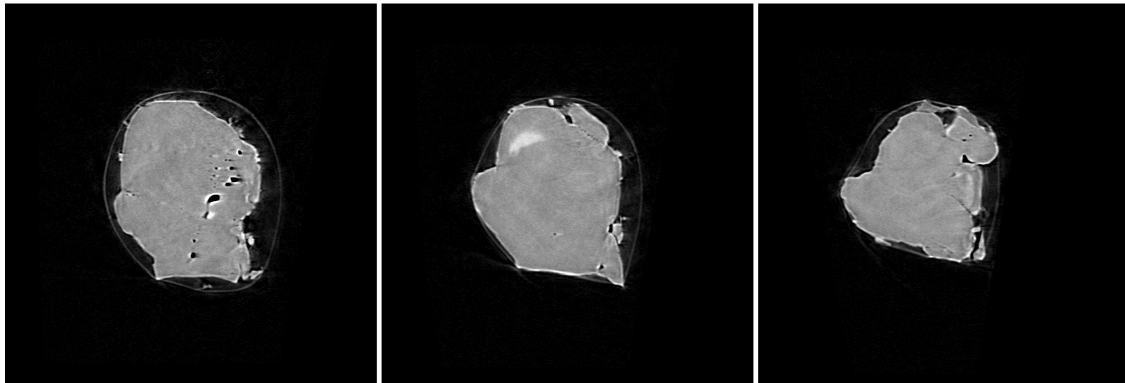
273.tif



336.tif

399.tif

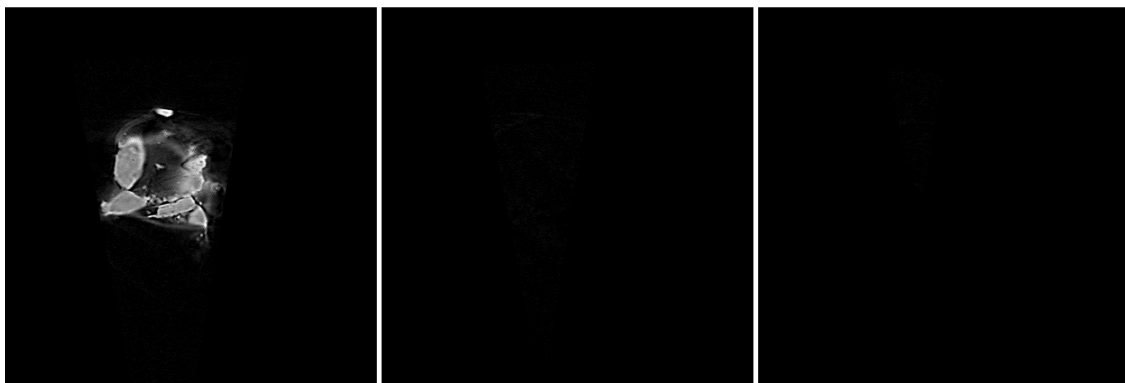
462.tif



525.tif

588.tif

651.tif



714.tif

777.tif

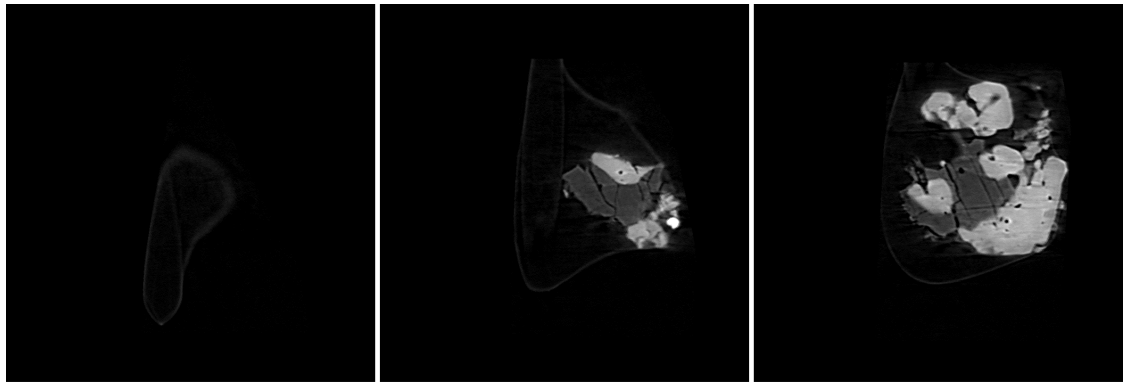
840.tif

dZ = 5.39721 um



(LAC)

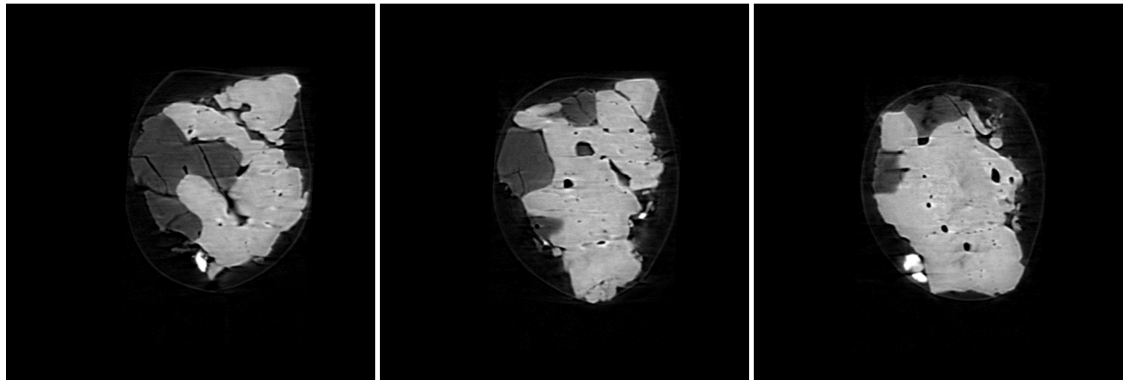
RA-QD02-0058 8 keV catalogue



187.tif

237.tif

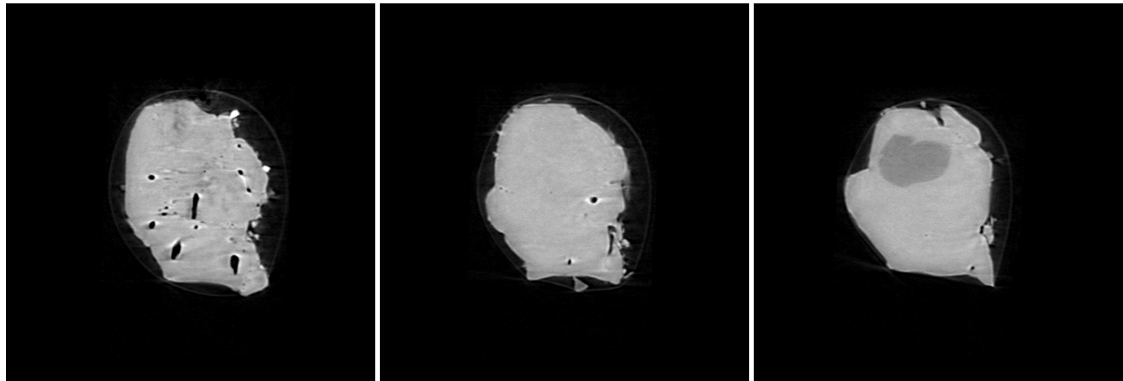
287.tif



337.tif

387.tif

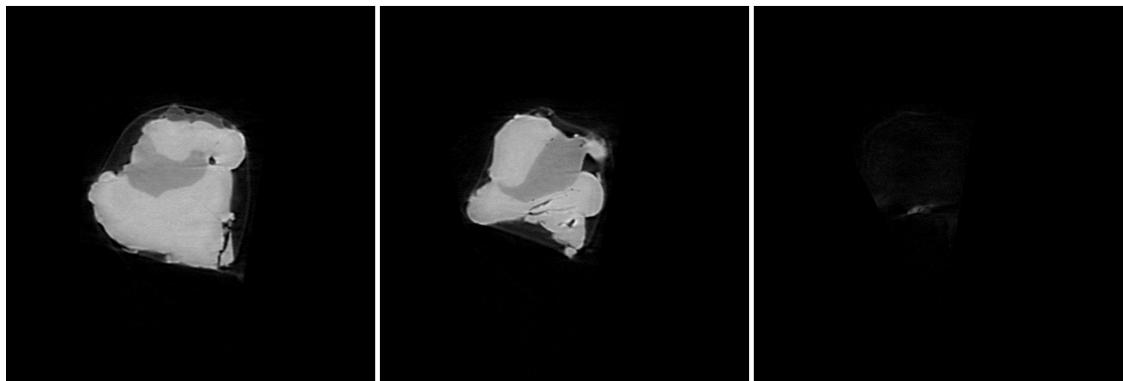
437.tif



487.tif

537.tif

587.tif



637.tif

687.tif

737.tif

dZ = 4.28350 um

10 um
431 cm⁻¹

(LAC)

RA-QD02-0058 Dual energy histogram

