

## Sample Results Summary Sheet

Please return this form to the Curator for each allocated Sample

**Sample ID:** RA-QD02-0060

**PI:** Tomoki Nakamura

**Type and date of analysis performed:**

XRD Jan/28/2011~ Feb/3/2011

FE-SEM, FE-EPMA Feb/19/2011~ Feb/28/2011

**Elements or phases identified:** (Mg, Si, olivine, pyroxene, aromatic carbon, etc.)

XRD : Ol, LPx

FE-SEM : Ol, LPx

FE-EPMA : Si, Al, Fe, Mn, Mg, Ca, Na, Cr, P, S

**Contaminant phases identified:** (Al, SUS, carbon particles, etc.)

N/A

**Sample handling:**

XRD

Attached to carbon fiber with resin.

FE-SEM, FE-EPMA

Exposed in atmosphere.

Polished by M cross

C-coated (20 nm)

**State of sample pre-analysis:**

Attached to carbon fiber with resin. (XRD)

Polished section with resin embedded (FE-SEM, FE-EPMA)

**State of sample post-analysis:**

Attached to carbon fiber with resin. (XRD)

Polished section with resin embedded, C-coated (FE-SEM, FE-EPMA)

N<sub>2</sub> hold in sample holder.

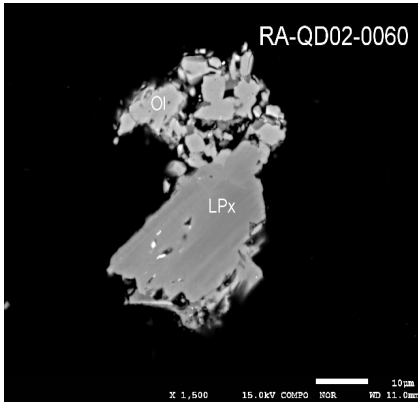
**Analysis data Notes:** (summary of the attached analysis data and/or images)

See attached sheets.

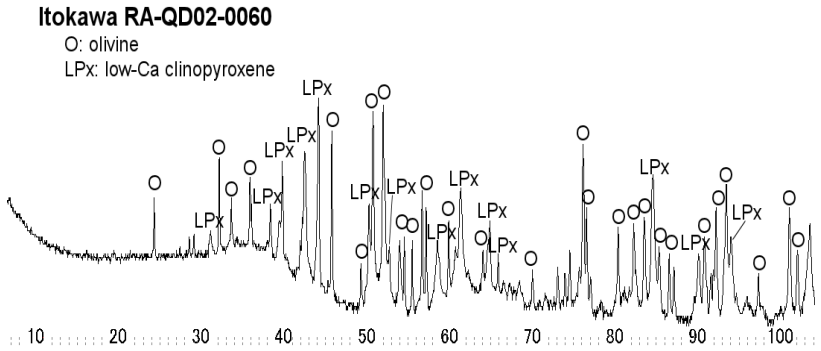
# RA-QD02-0060

Analysis S-XRD (polish) FE-SEM FE-EPMA  
 Present status Putted butt with a large hole by FIB sampling

FE-SEM/BSE



S-XRD



FE-EPMA

wt%	Olivine n=9Ol 1 sigma	LPx n=26 .Px 1 sigma	HPx n=0 4Px 1 sigma	Plagio n=0 Pl 1 sigma
SiO2	39.16	0.68	57.00	0.84
TiO2	0.02	0.02	0.04	0.04
Al2O3	0.09	0.13	0.35	0.06
FeO	23.29	0.32	10.73	1.74
MnO	0.45	0.02	0.40	0.05
MgO	38.12	1.18	30.99	1.24
CaO	0.01	0.01	0.33	0.13
Na2O	0.06	0.10	0.05	0.03
K2O	0.01	0.01	0.01	0.02
Cr2O3	0.05	0.07	0.43	0.23
NiO	0.02	0.02	0.02	0.03
P2O5	0.09	0.13	0.01	0.02
SO3	0.03	0.04	0.02	0.02
Total	101.41	1.31	100.36	1.21

SUM

Comment

Olivine (Fa#)	25.53	0.60		
LPx(Fs#)			16.17	2.68
LPx(Wo#)			0.63	0.24
LPx(En#)			83.20	2.78
HPx(Fs#)				
HPx(Wo#)				
HPx(En#)				
Pl(Or#)				
Pl(An#)				
Pl(Ab#)				