

Sample Results Summary Sheet

Please return this form to the Curator for each allocated Sample

Sample ID: RA-QD02-0061

PI: Akira Tsuchiyama

Type and date of analysis performed:

Tomography Jan/25/2011 (7 keV)

 Jan/24/2011 (8 keV)

Elements or phases identified: (Mg, Si, olivine, pyroxene, aromatic carbon, etc.)

Mode	OI	LPx	HPx	PI	Tr	Tae	Chm	CP	Kam
Vol %	3.94	88.59	-	6.91	0.48	0.08	-	-	-

Contaminant phases identified: (Al, SUS, carbon particles, etc.)

N/A

Sample handling:

Exposed in atmosphere.

State of sample pre-analysis:

Attached to carbon fiber with resin.

State of sample post-analysis:

N₂ hold in sample holder.

Analysis data Notes: (summary of the attached analysis data and/or images)

See attached sheets.

RA-QD02-0061

Operation Date Jan/25/2011 (7 keV)
 Jan/24/2011 (8 keV)
operated by T. Matsumoto (7 keV)
 Y. Ogami (8 keV)
analyzed by A. Shimada

Mode	Ol	LPx	HPx	Pl	Tr	Tae	Chm	CP	Kam
Vol %	3.94	88.59	-	6.91	0.48	0.08	-	-	-

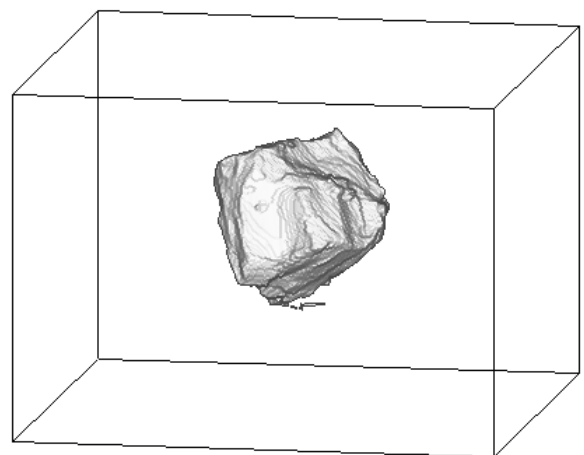
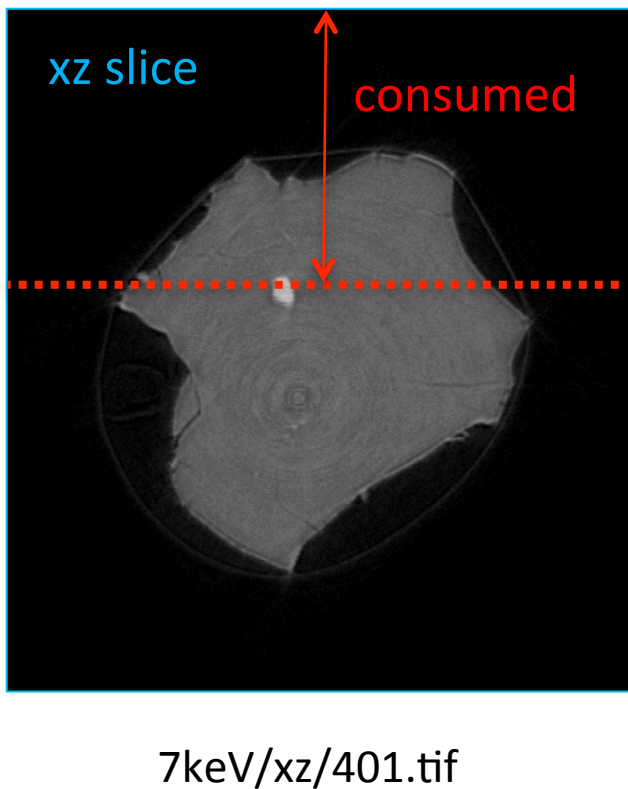
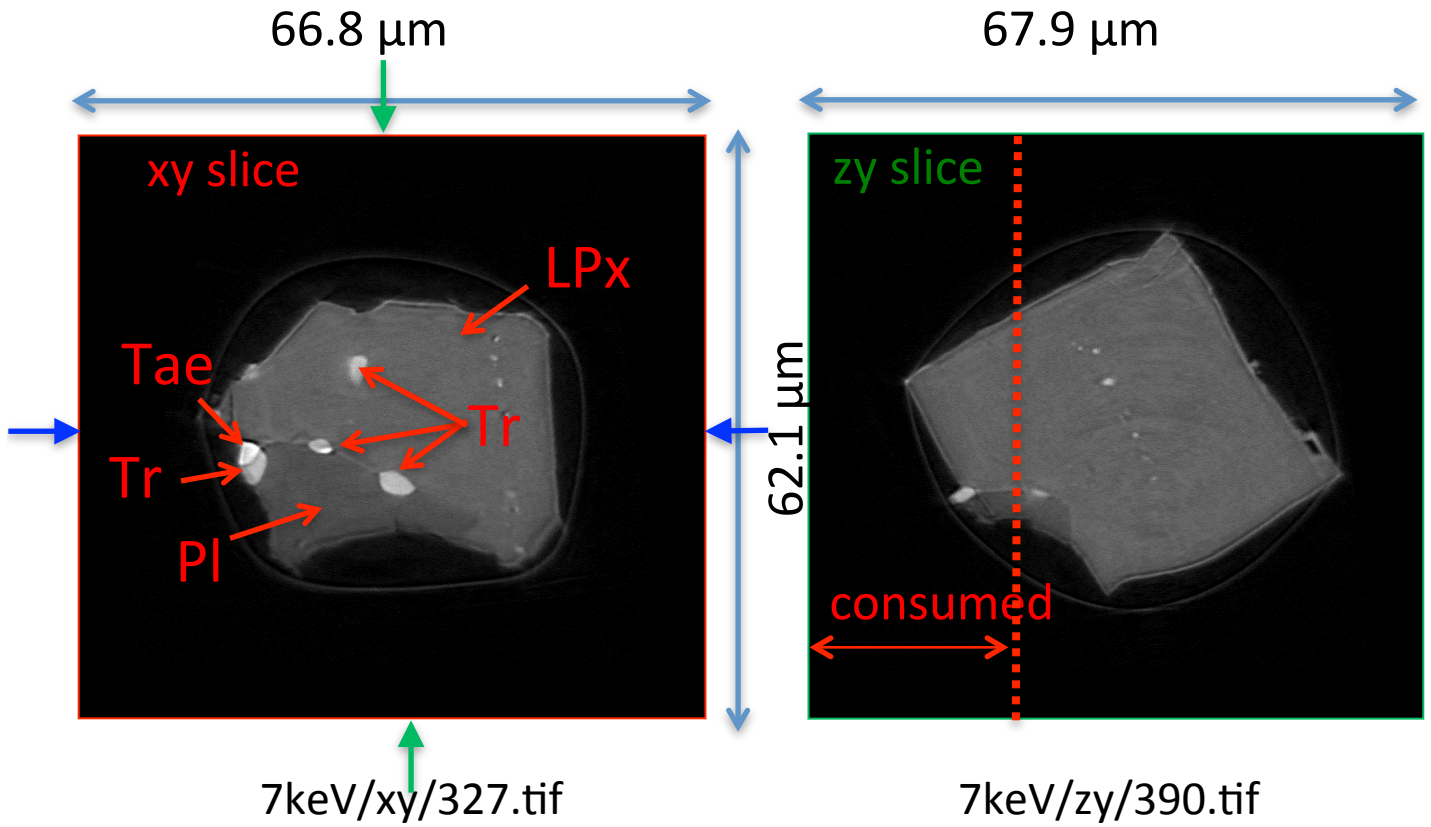
A (μm)	B (μm)	C (μm)	V (μm^3)	Porosity (%)
18.5	19.6	24.6	33097	1.55

Ol: olivine
LPx: low calcium pyroxene
HPx: high calcium pyroxene
Pl: plagioclase
Tr: troilite
Tae: taenite
Chm: chromite
CP: calcium phosphate
Kam: kamacite

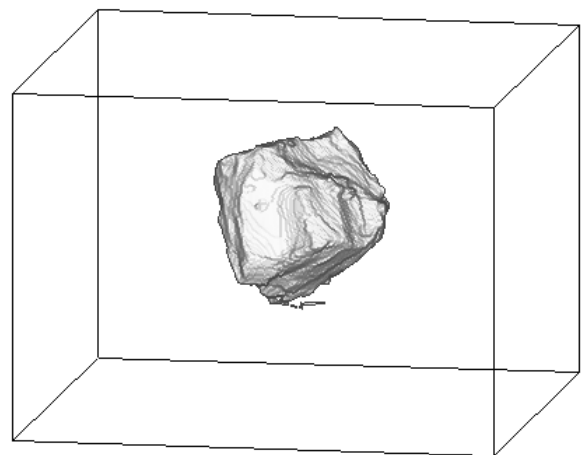
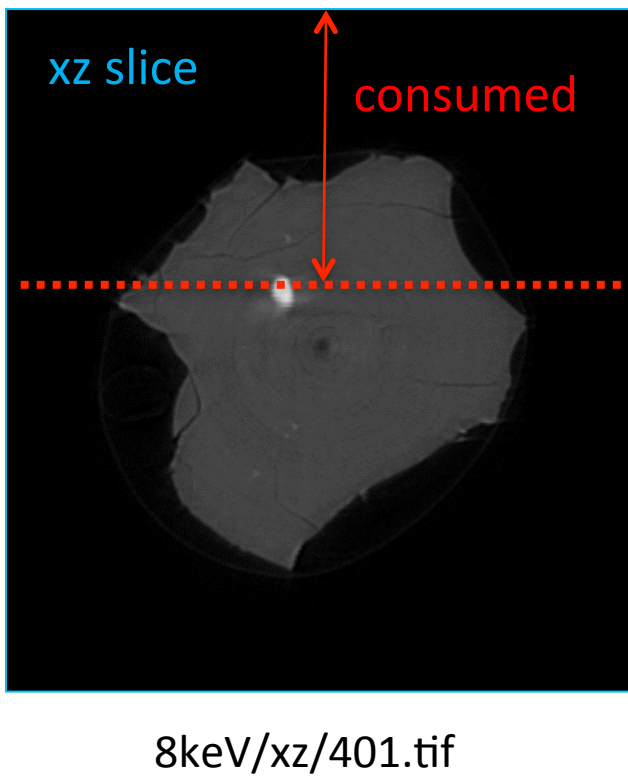
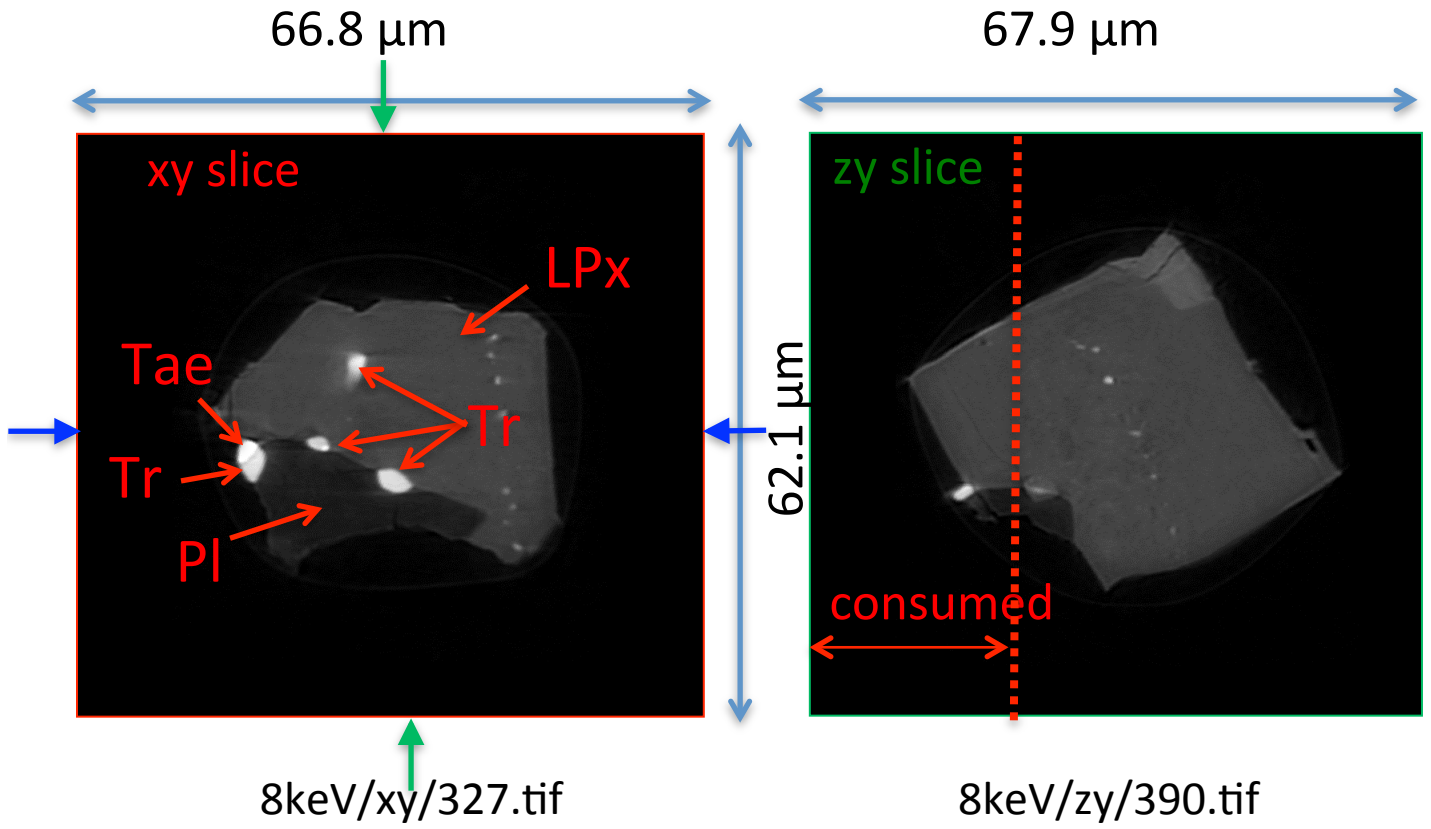
A, B, and C: shortest, middle, and longest axial radii, respectively,
of a best-fit ellipsoid for the particle

V: particle volume without pore
dz: CT image interval
LAC: linear attenuation coefficient of X-ray

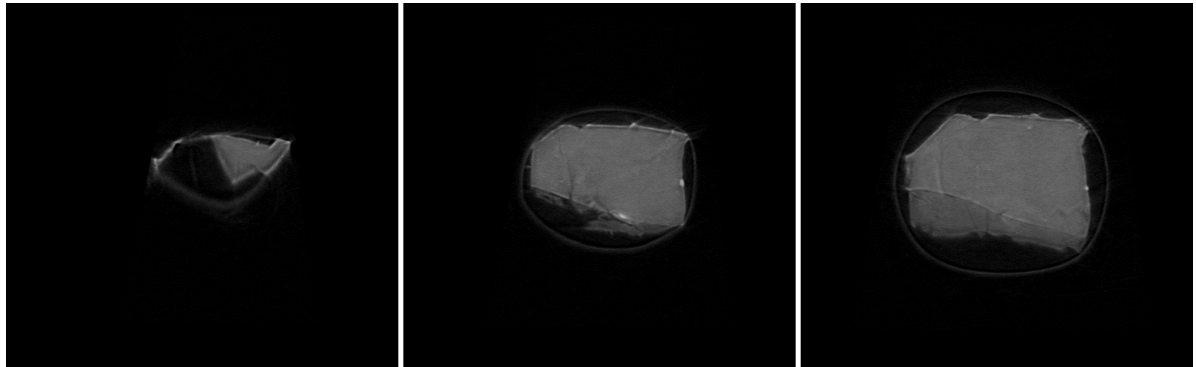
RA-QD02-0061 7 keV



RA-QD02-0061 8 keV



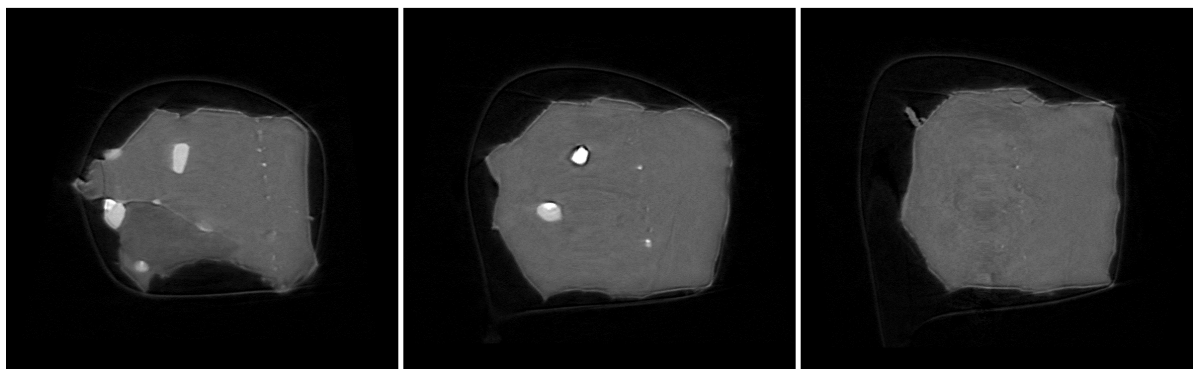
RA-QD02-0061 7 keV catalogue



190.tif

240.tif

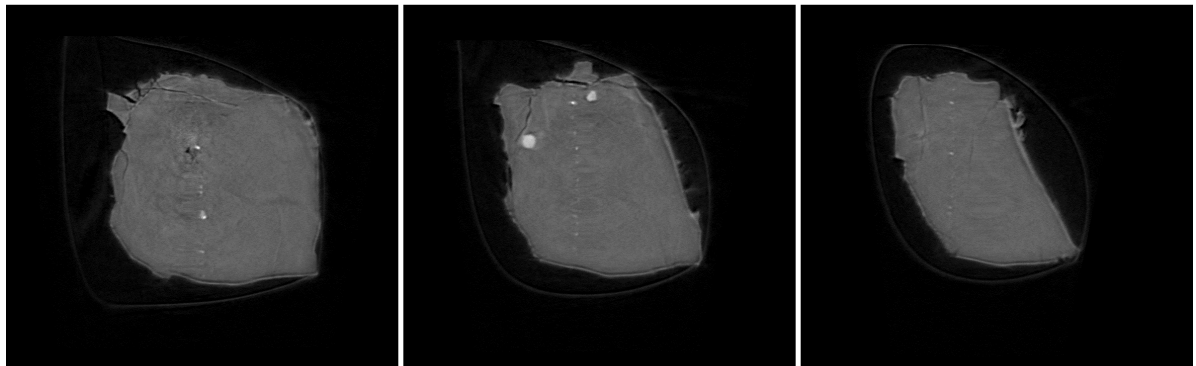
290.tif



340.tif

390.tif

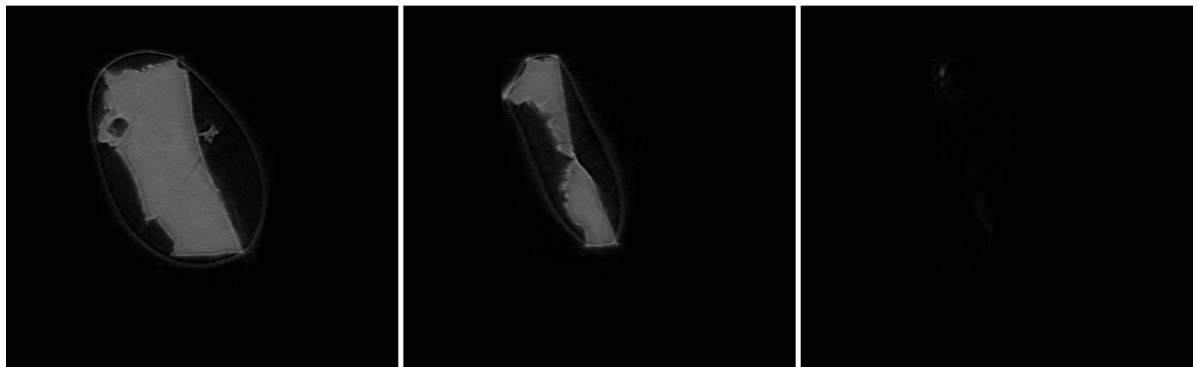
440.tif



490.tif

540.tif

590.tif



640.tif

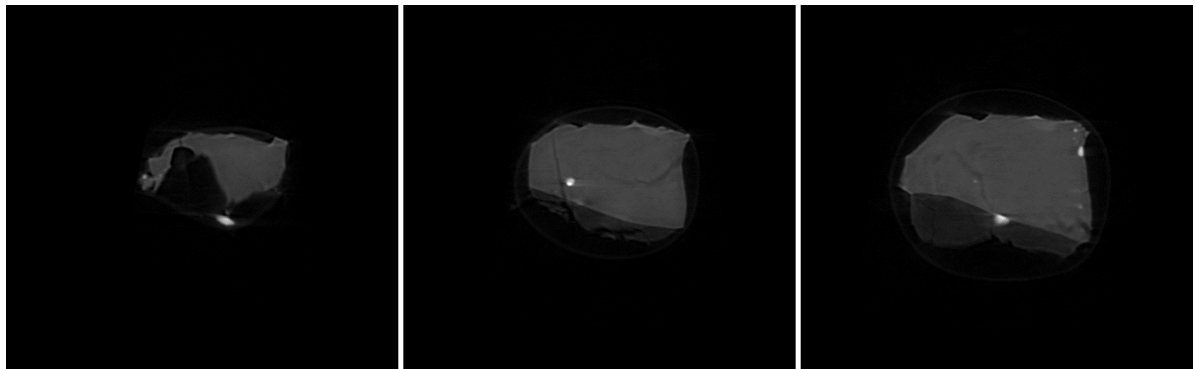
690.tif

740.tif

dZ = 4.28350 um

10 um
431 cm⁻¹ (LAC)

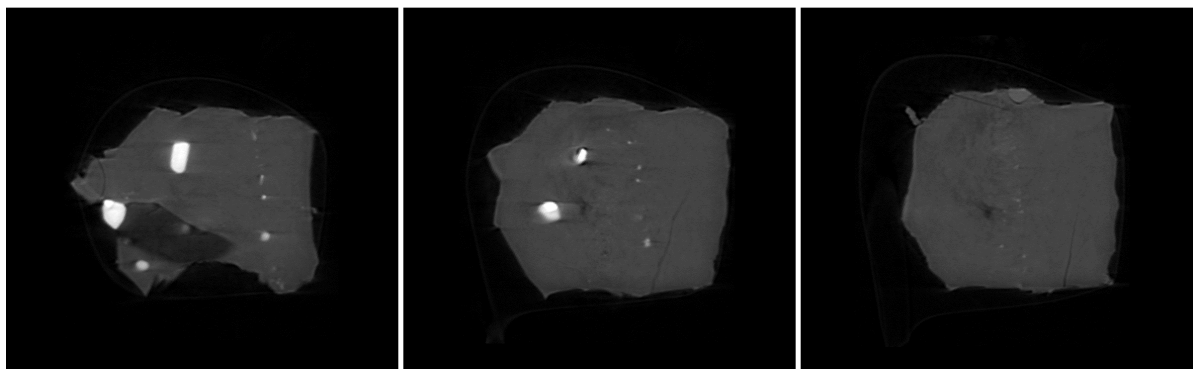
RA-QD02-0061 8 keV catalogue



206.tif

253.tif

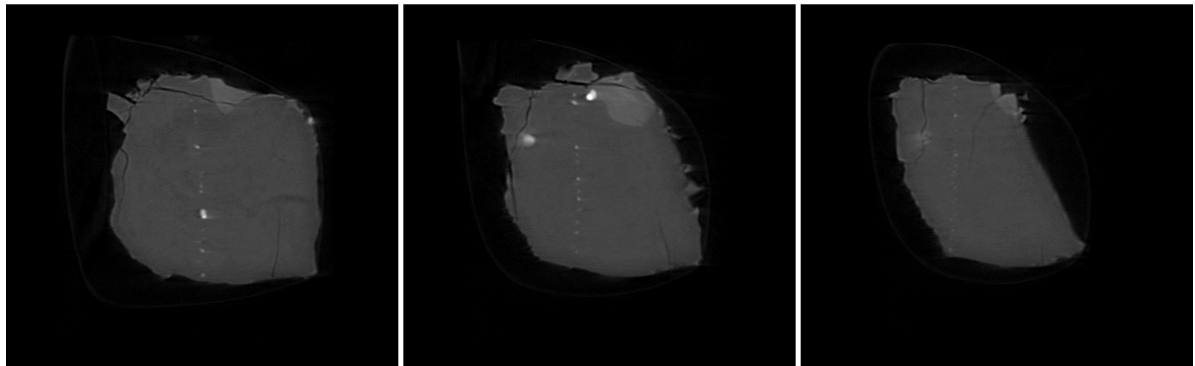
300.tif



347.tif

394.tif

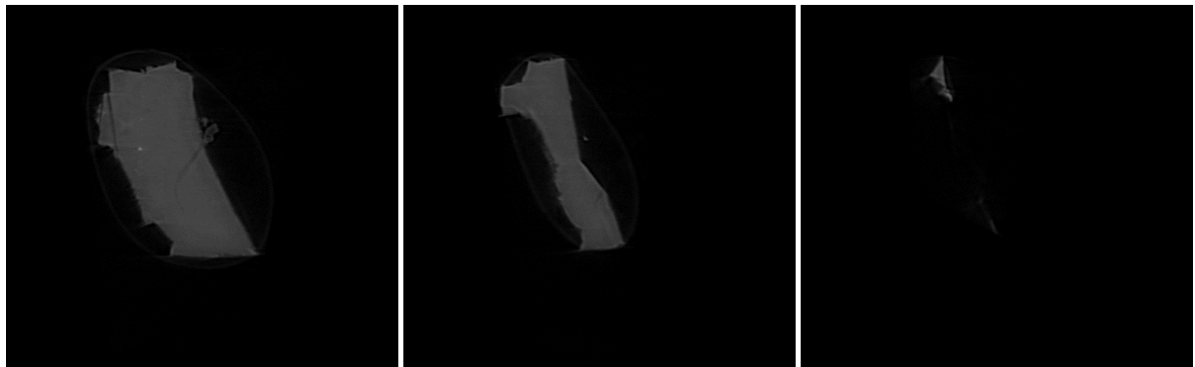
441.tif



488.tif

535.tif

582.tif



629.tif

676.tif

723.tif

dZ = 4.02649 um

10 um
862 cm⁻¹ (LAC)

RA-QD02-0061 Dual energy histogram

