

Sample Results Summary Sheet

Please return this form to the Curator for each allocated Sample

Sample ID: RA-QD02-0063

PI: Akira Tsuchiyama

Type and date of analysis performed:

Tomography Jan/25/2011 (7 keV)

 Jan/24/2011 (8 keV)

Elements or phases identified: (Mg, Si, olivine, pyroxene, aromatic carbon, etc.)

Mode	OI	LPx	HPx	PI	Tr	Tae	Chm	CP	Kam
Vol %	26.6	58.4	4.69	8.97	0.10	-	-	-	-

Contaminant phases identified: (Al, SUS, carbon particles, etc.)

N/A

Sample handling:

Exposed in atmosphere.

State of sample pre-analysis:

Attached to carbon fiber with resin.

State of sample post-analysis:

N₂ hold in sample holder.

Analysis data Notes: (summary of the attached analysis data and/or images)

See attached sheets.

RA-QD02-0063

Operation Date Jan/25/2011 (7 keV)
Jan/24/2011 (8 keV)
operated by Y. Ogami(7 keV)
T. Matsumoto (8 keV)
analyzed by A. Shimada

Mode	Ol	LPx	HPx	Pl	Tr	Tae	Chm	CP	Kam
Vol %	26.6	58.4	4.69	8.97	0.10	-	-	-	-

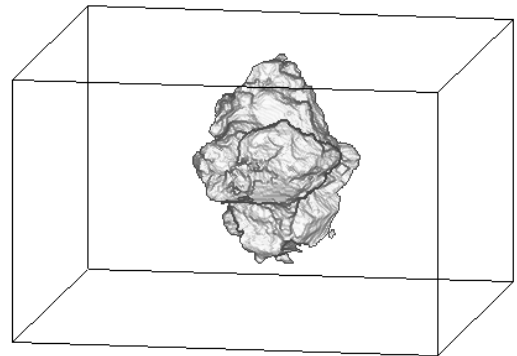
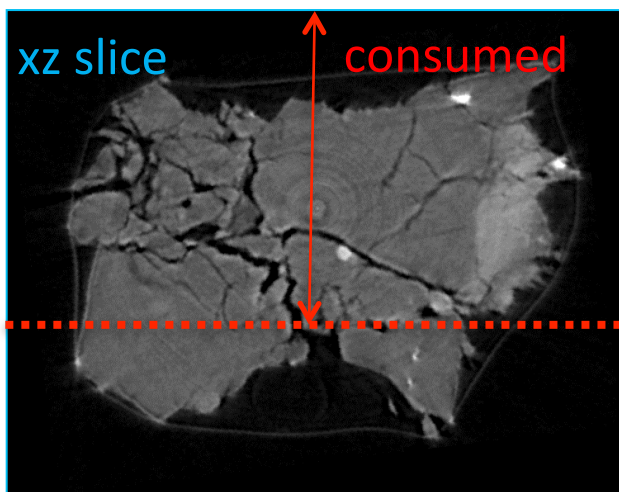
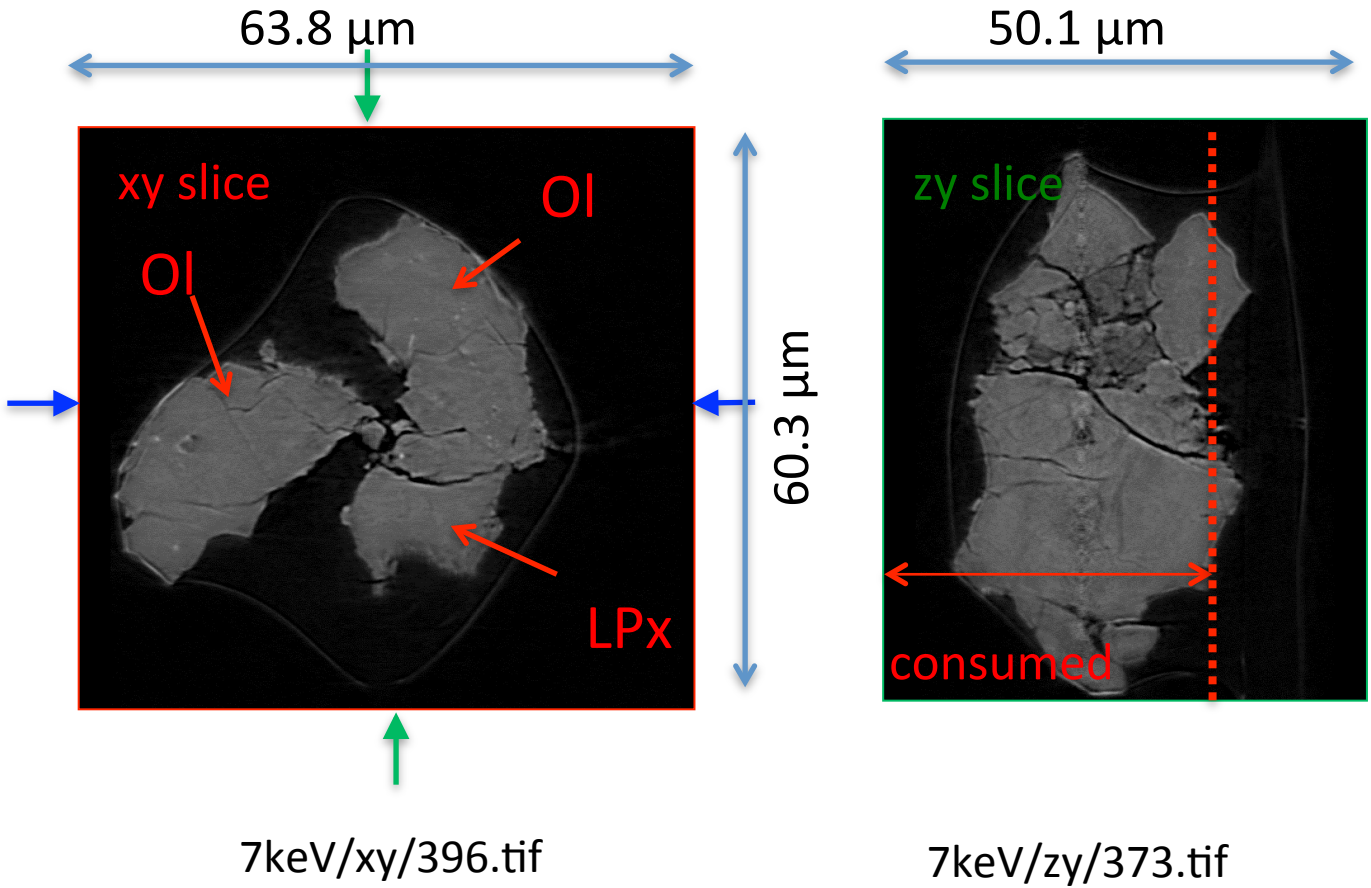
A (μm)	B (μm)	C (μm)	V (μm^3)	Porosity (%)
17.1	23.1	29.1	36429	6.34

Ol: olivine
LPx: low calcium pyroxene
HPx: high calcium pyroxene
Pl: plagioclase
Tr: troilite
Tae: taenite
Chm: chromite
CP: calcium phosphate
Kam: kamacite

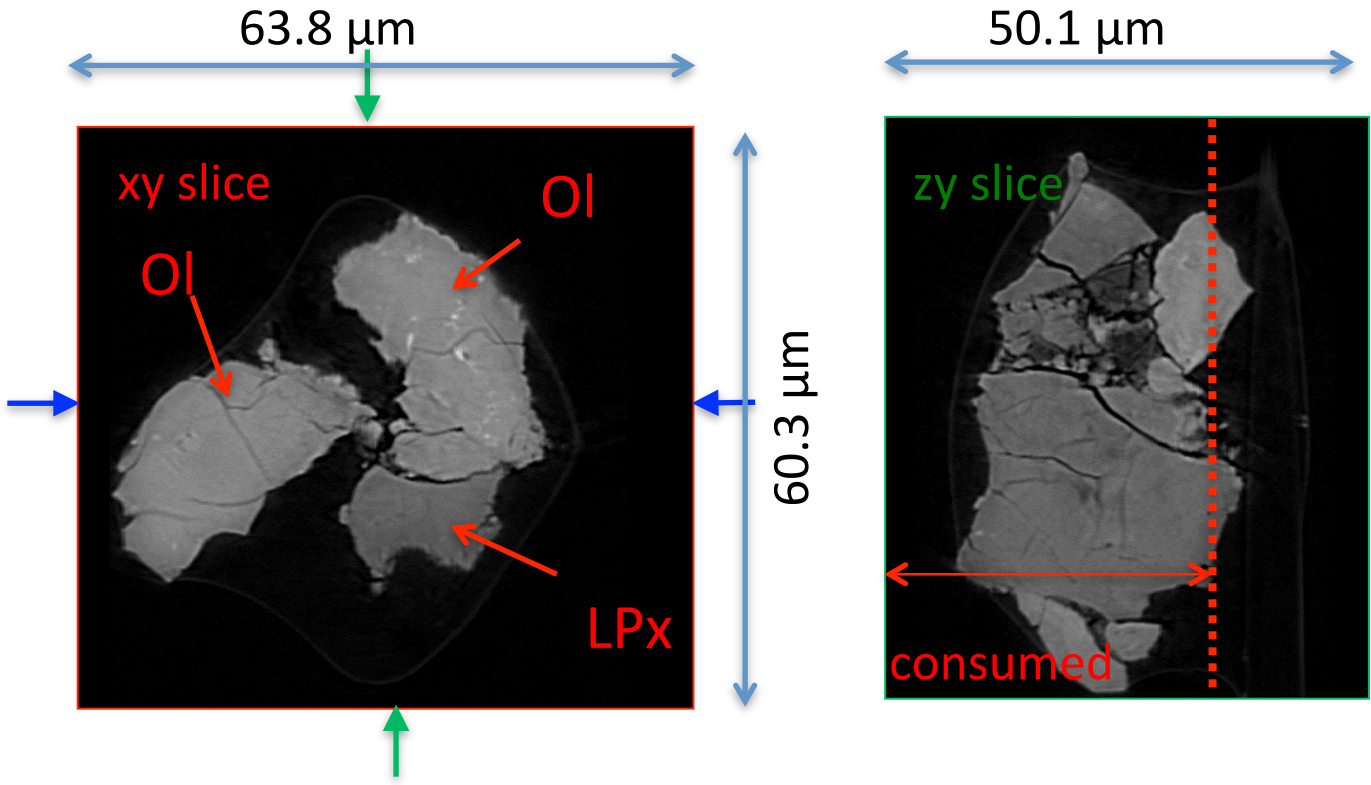
A, B, and C: shortest, middle, and longest axial radii, respectively,
of a best-fit ellipsoid for the particle

V: particle volume without pore
dz: CT image interval
LAC: linear attenuation coefficient of X-ray

RA-QD02-0063 7 keV

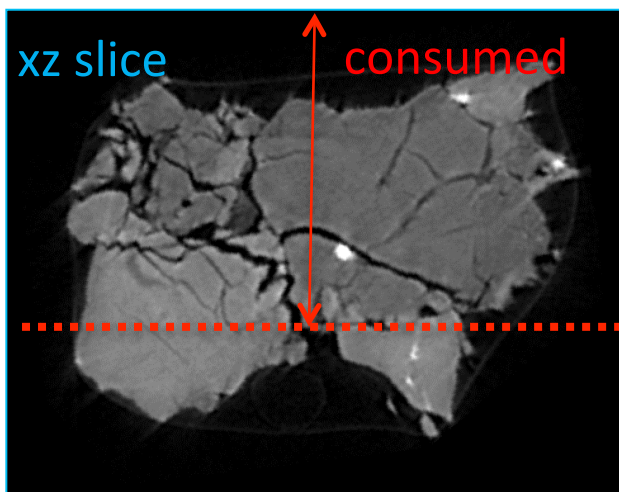


RA-QD02-0063 8 keV

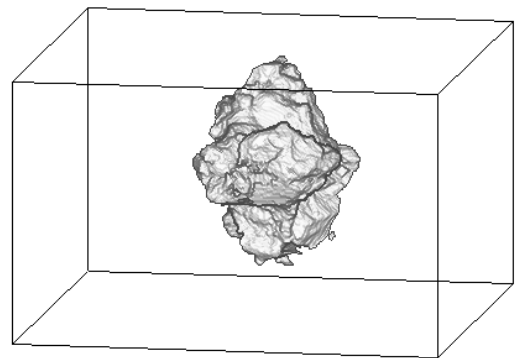


7keV/xy/396.tif

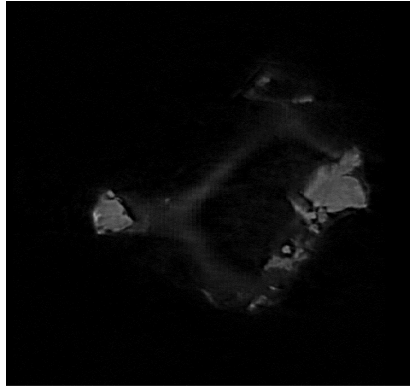
7keV/zy/373.tif



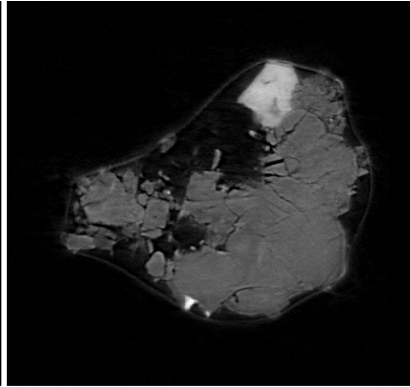
7keV/xz/352.tif



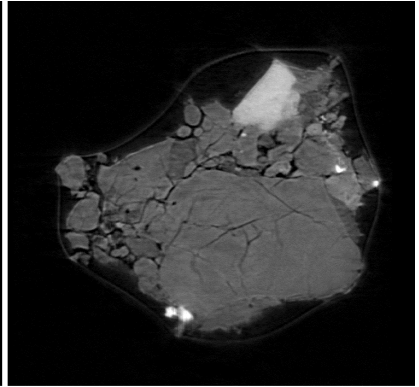
RA-QD02-0063 7 keV catalogue



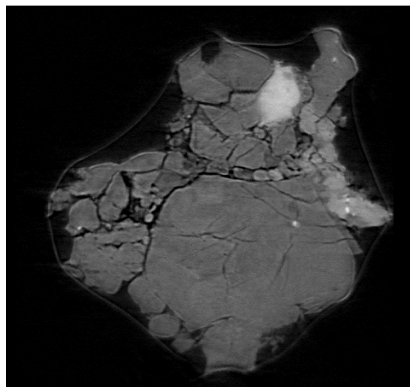
082.tif



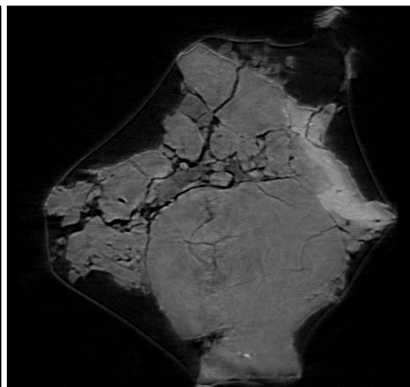
124.tif



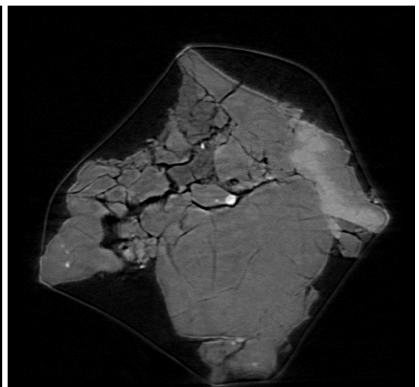
166.tif



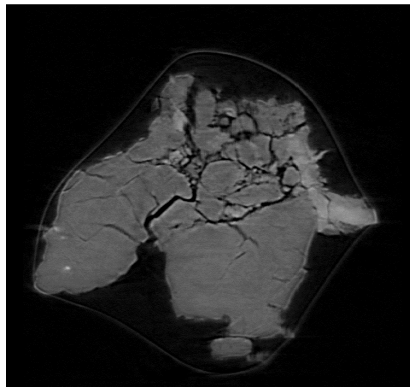
208.tif



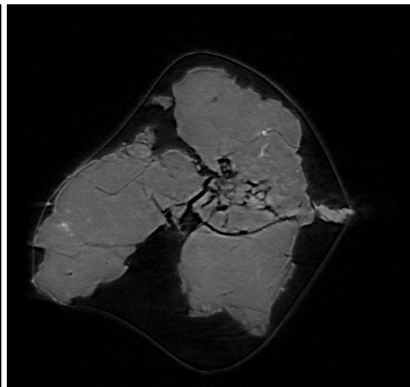
250.tif



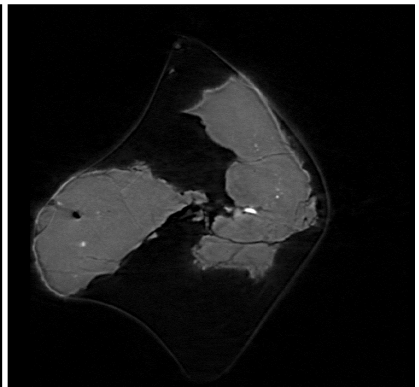
292.tif



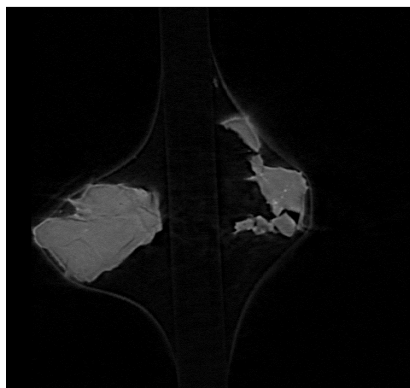
334.tif



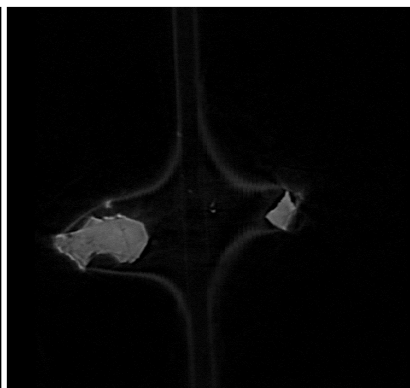
376.tif



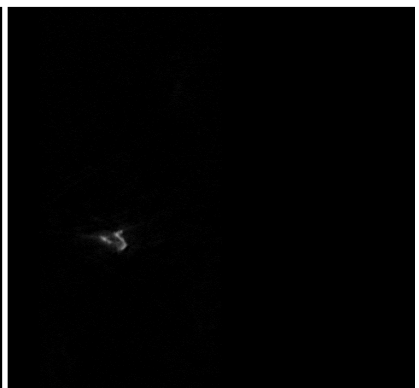
418.tif



460.tif



502.tif

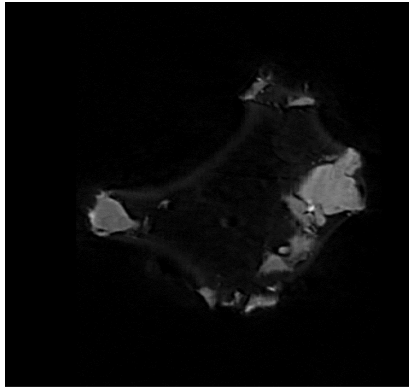


544.tif

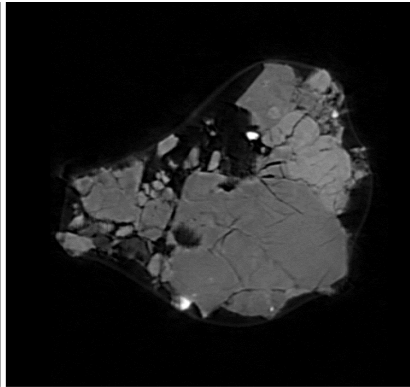
dZ = 3.59814 um

10 um
431 cm-1 (LAC)

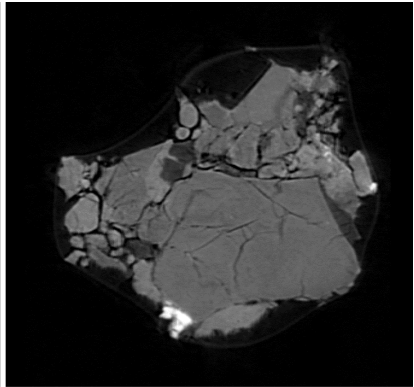
RA-QD02-0063 8 keV catalogue



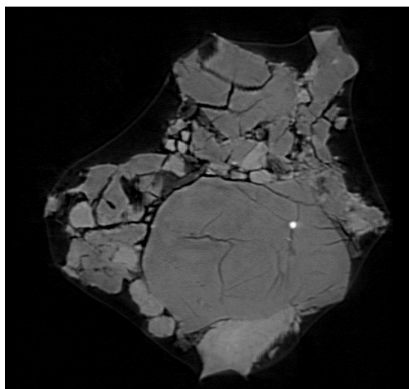
089.tif



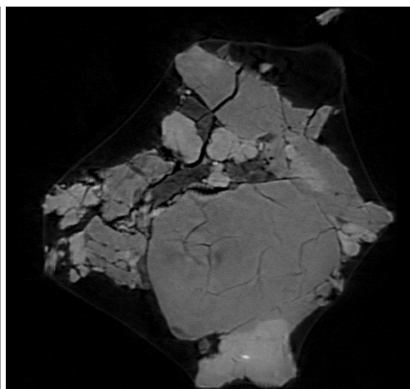
131.tif



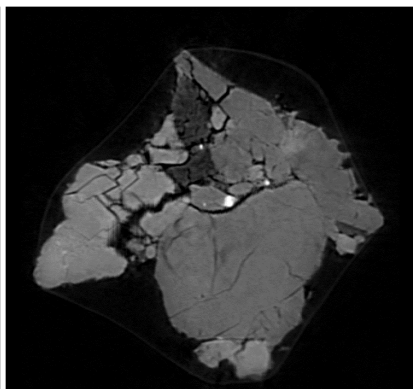
173.tif



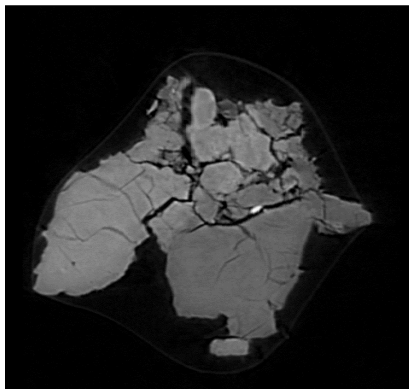
215.tif



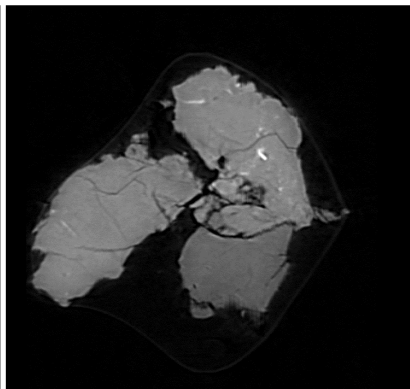
257.tif



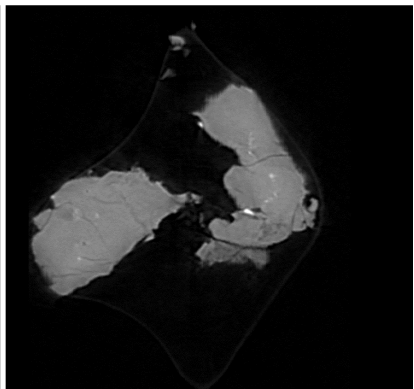
299.tif



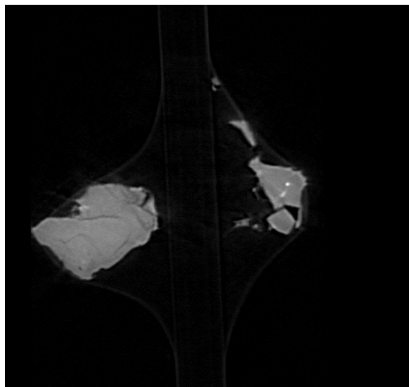
341.tif



383.tif



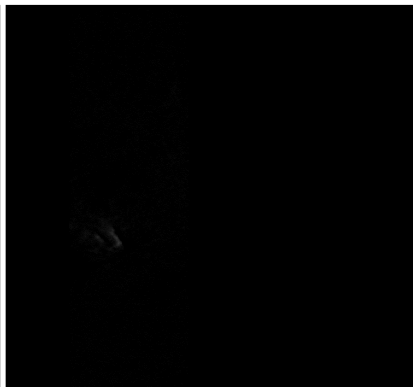
425.tif



467.tif



509.tif



551.tif

dZ = 3.59814 um

10 um
575 cm⁻¹ (LAC)

RA-QD02-0063 Dual energy histogram

