

Sample Results Summary Sheet

Please return this form to the Curator for each allocated Sample

Sample ID: RA-QD02-0067

PI: Akira Tsuchiyama

Type and date of analysis performed:

Tomography Jan/25/2011 (7 keV)

 Jan/24/2011 (8 keV)

Elements or phases identified: (Mg, Si, olivine, pyroxene, aromatic carbon, etc.)

Mode	OI	LPx	HPx	PI	Tr	Tae	Chm	CP	Kam
Vol %	47.6	-	-	52.4	-	-	-	-	-

Contaminant phases identified: (Al, SUS, carbon particles, etc.)

N/A

Sample handling:

Exposed in atmosphere.

State of sample pre-analysis:

Attached to carbon fiber with resin.

State of sample post-analysis:

N₂ hold in sample holder.

Analysis data Notes: (summary of the attached analysis data and/or images)

See attached sheets.

RA-QD02-0067

Operation Date Jan/25/2011 (7 keV)
Jan/24/2011 (8 keV)
operated by Y. Ogami(7 keV)
T. Matsumoto (8 keV)
analyzed by A. Shimada

Mode	Ol	LPx	HPx	Pl	Tr	Tae	Chm	CP	Kam
Vol %	47.6	-	-	52.4	-	-	-	-	-

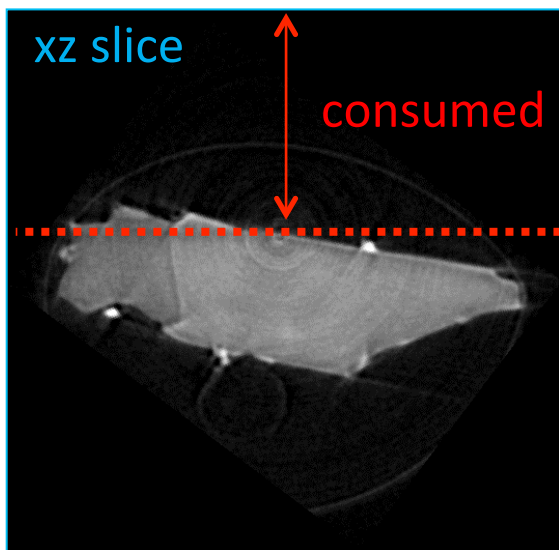
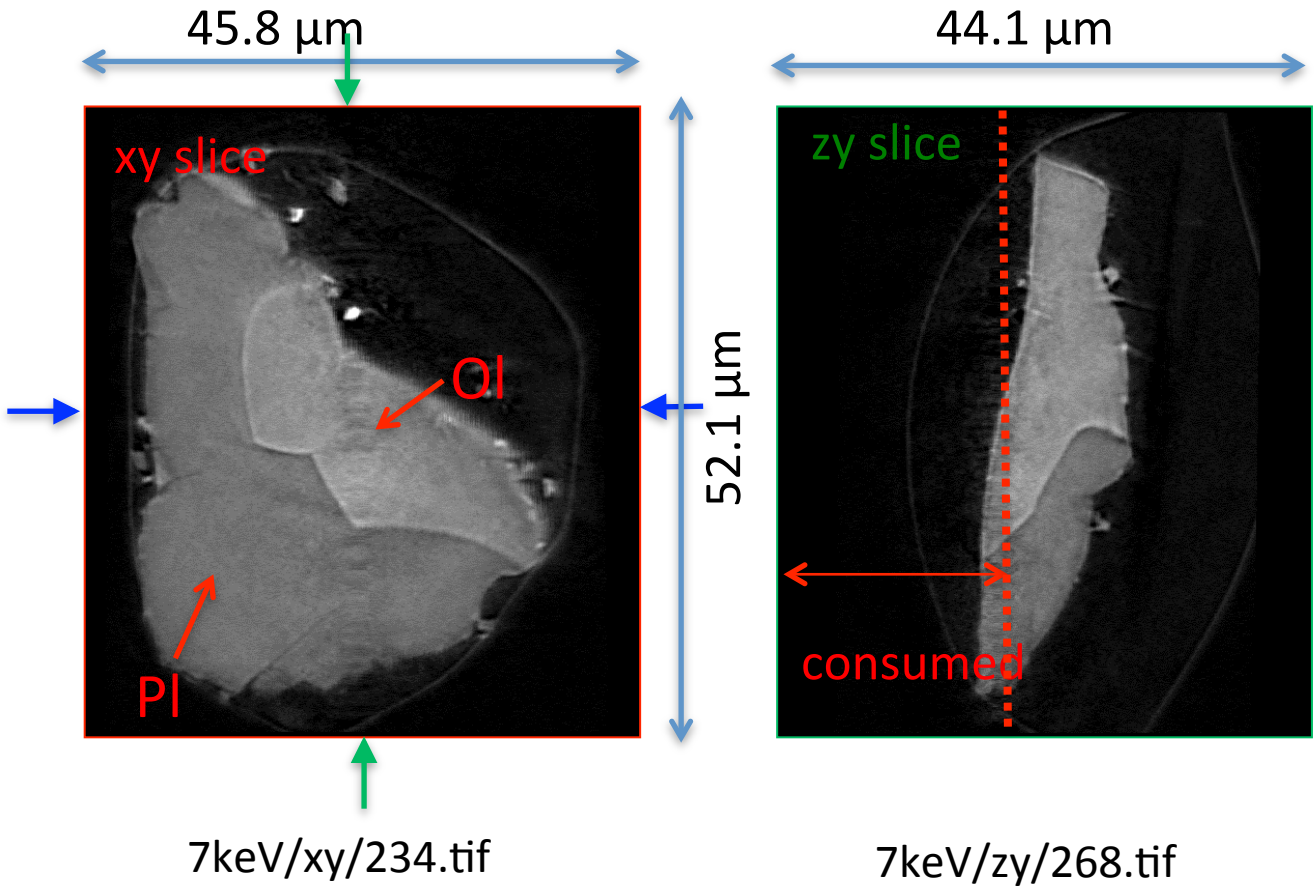
A (μm)	B (μm)	C (μm)	V (μm^3)	Porosity (%)
5.81	20.3	23.8	9834	0.02

Ol: olivine
LPx: low calcium pyroxene
HPx: high calcium pyroxene
Pl: plagioclase
Tr: troilite
Tae: taenite
Chm: chromite
CP: calcium phosphate
Kam: kamacite

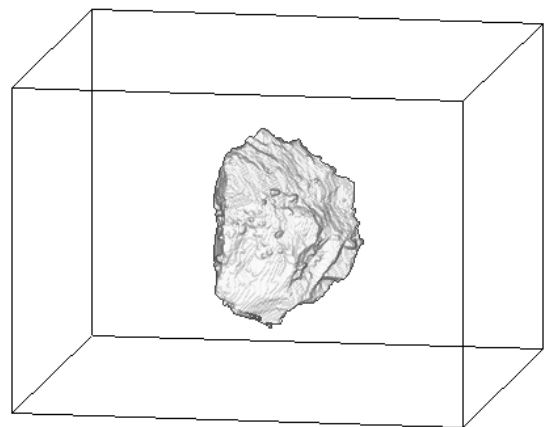
A, B, and C: shortest, middle, and longest axial radii, respectively,
of a best-fit ellipsoid for the particle

V: particle volume without pore
dz: CT image interval
LAC: linear attenuation coefficient of X-ray

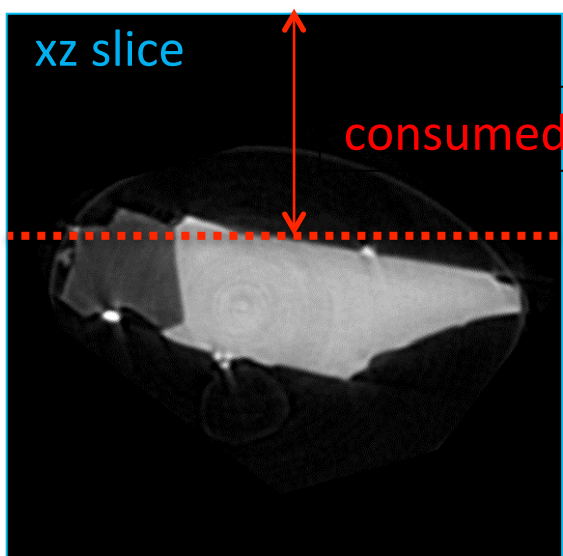
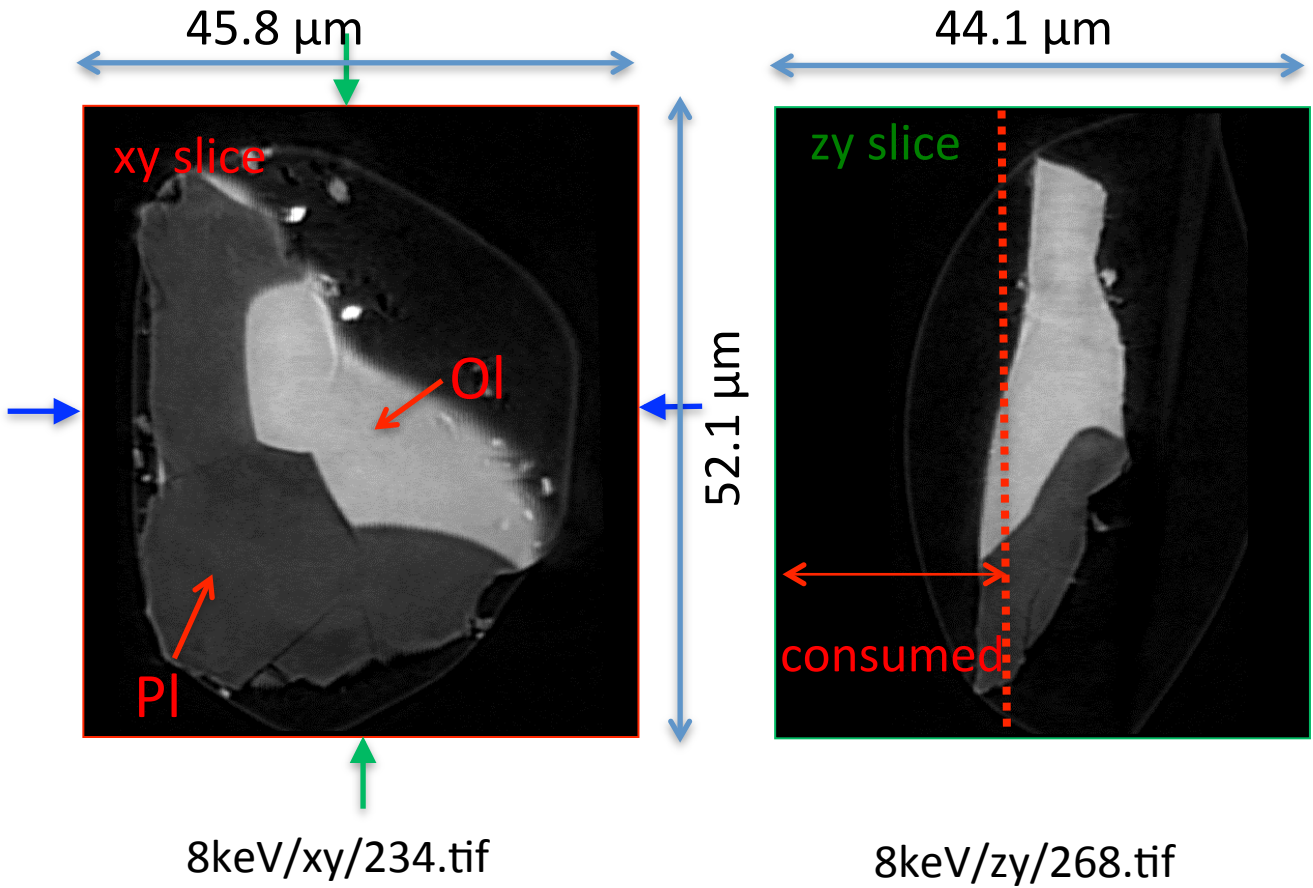
RA-QD02-0067 7 keV



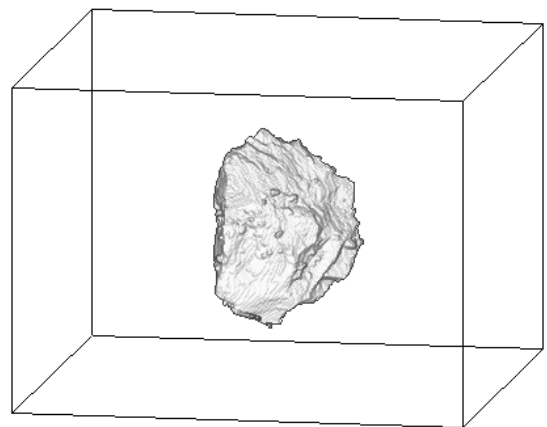
7keV/xz/304.tif



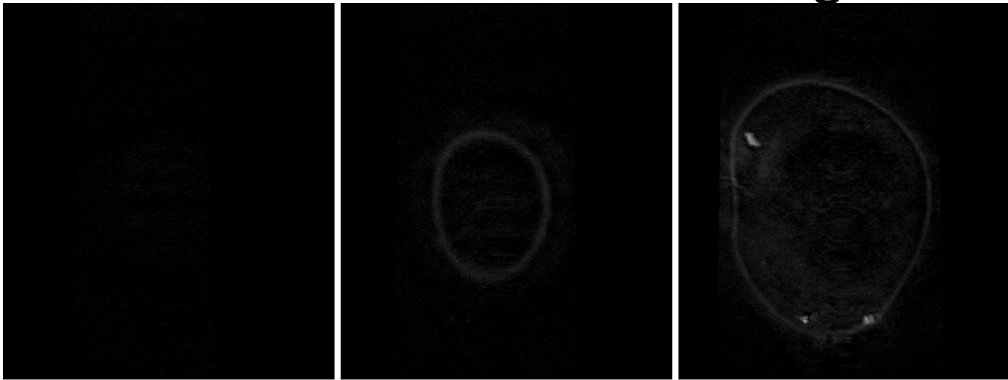
RA-QD02-0067 8 keV



8keV/xz/304.tif



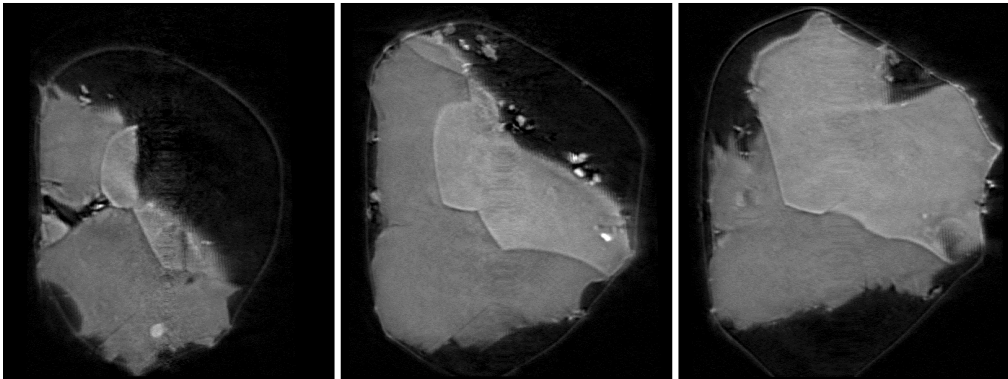
RA-QD02-0067 7 keV catalogue



110.tif

143.tif

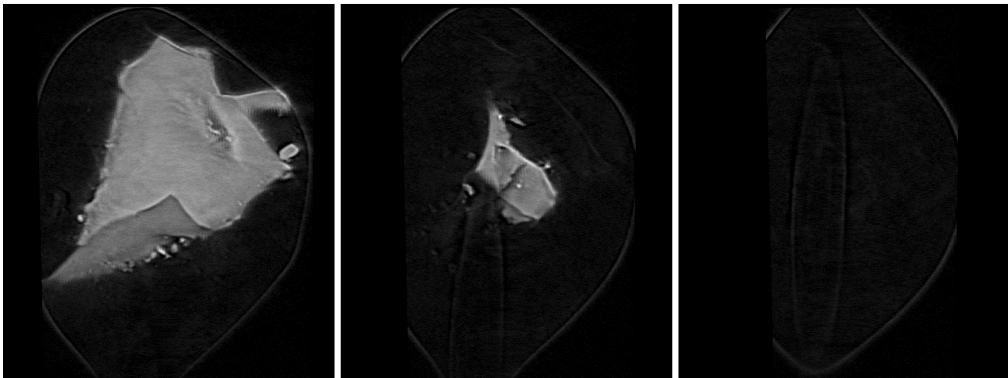
176.tif



209.tif

242.tif

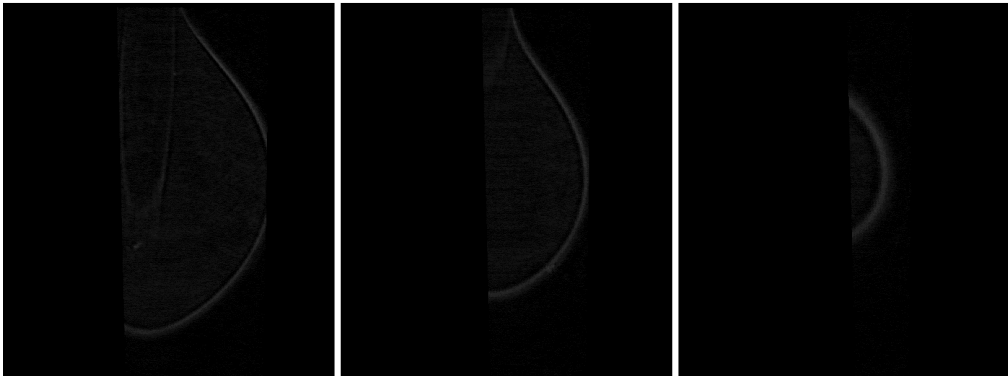
275.tif



308.tif

341.tif

374.tif



407.tif

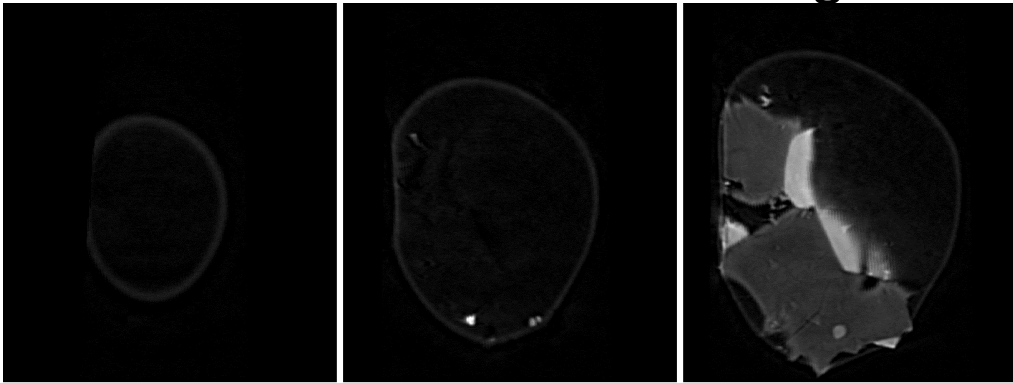
440.tif

473.tif

dZ = 2.82711 um

 10 um
287 cm⁻¹ (LAC)

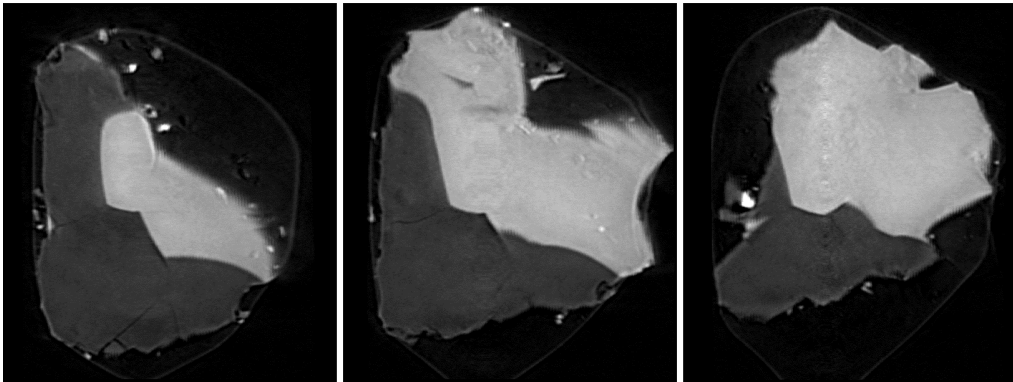
RA-QD02-0067 8 keV catalogue



151.tif

178.tif

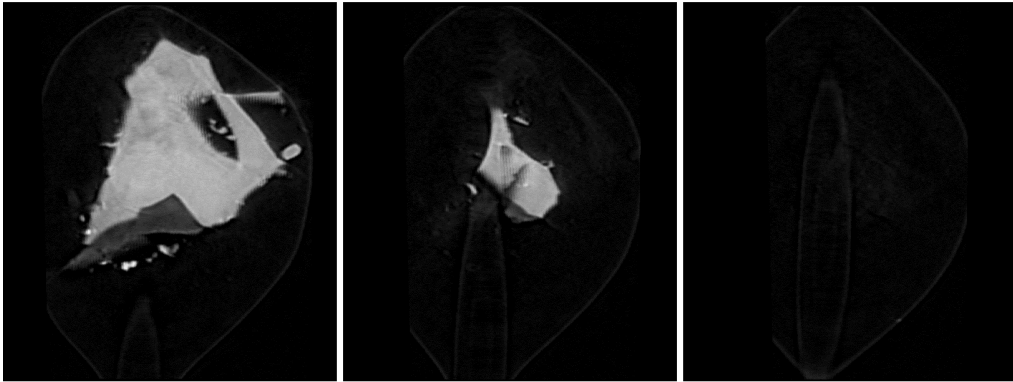
205.tif



232.tif

259.tif

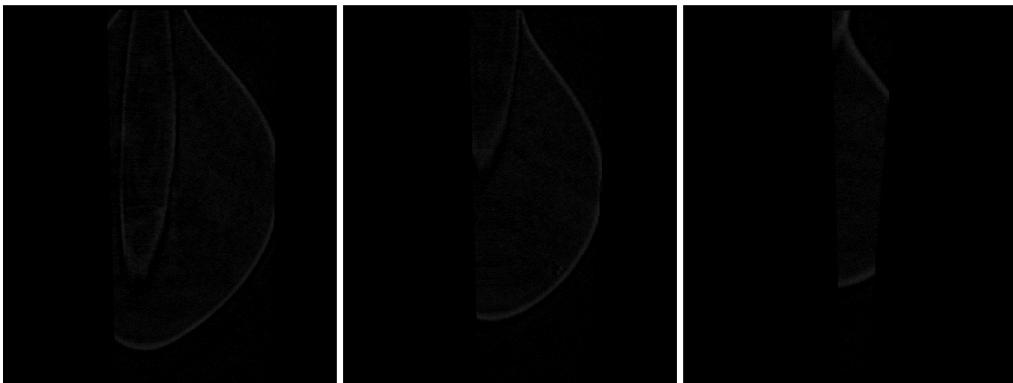
286.tif



313.tif

340.tif

367.tif



394.tif

421.tif

448.tif

dZ = 2.31309 um

