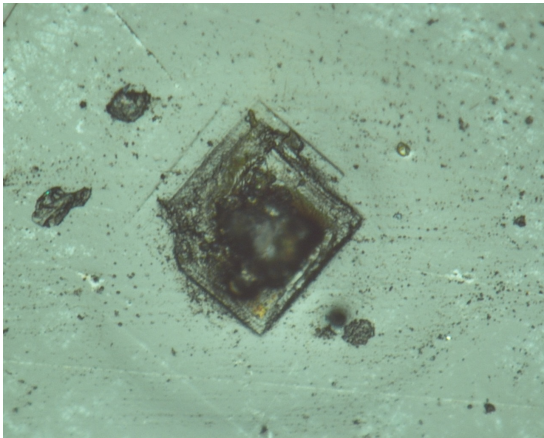


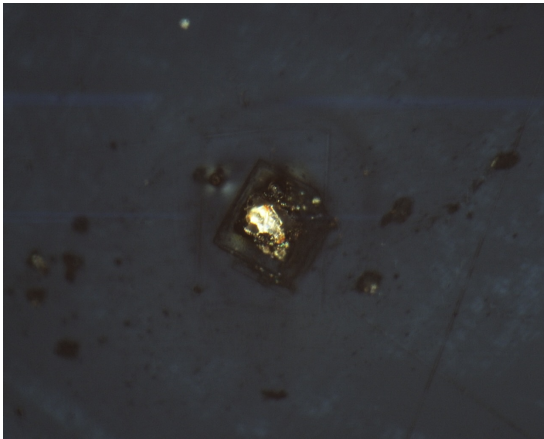
RA-QD02-0133-01

Status	Date	Size	Transfer	Category	Phase
Curation glovebox2, PS		56μ m	SG03f7,ICF70-025-SGf0017-2,Univ. Tokyo,glovebox2	1	ol.pl



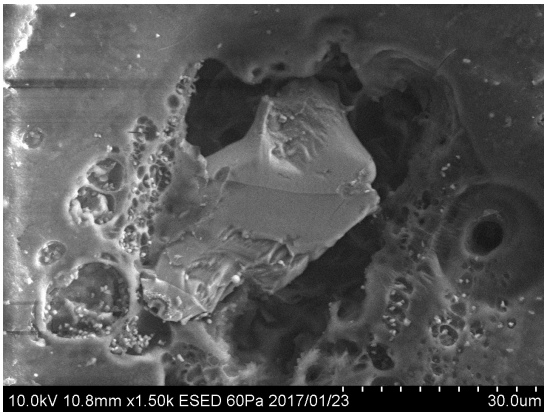
20150814/returnSamplecheck/Mikouchi_AO1/RA-QD02-0133-01_RLx320.jpg

SAMPLE : RA-QD02-0133-01
PREID :
PROCESS : sample check
OPERATOR : Yada
COMMENT : polished section



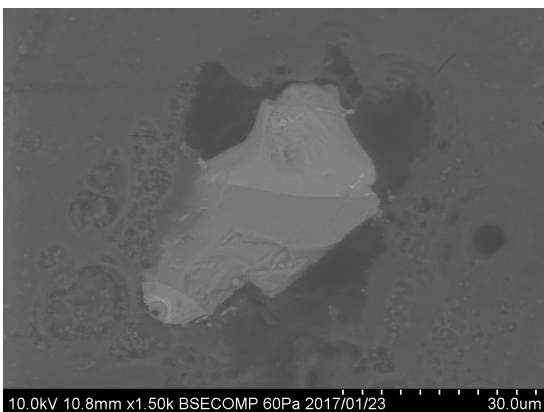
20170118/returnSamplecheck/Mikouchi_AO1/03_RA-QD02-0133-01_rl_x200.jpg

SAMPLE : RA-QD02-0133-01
PREID :
PROCESS : optical microscope observation
OPERATOR : Yada, Yoshitake, Sakamoto
COMMENT : reflected light, x200



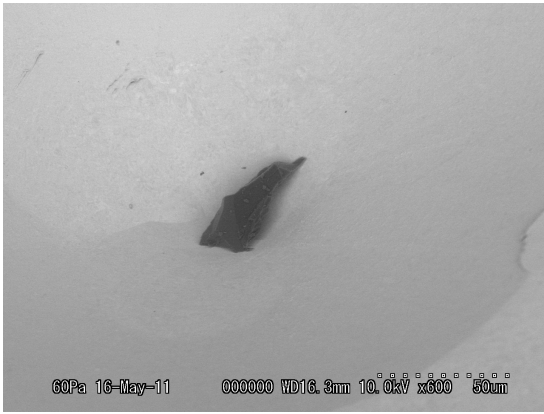
20170123/returnSamplecheck/MikouchiAO1/07_RA-QD02-0133-01_esed.bmp

SAMPLE : RA-QD02-0133-01
PREID :
PROCESS : ESED
OPERATOR : Yada, Yoshitake
COMMENT :



20170123/returnSamplecheck/MikouchiAO1/08_RA-QD02-0133-01_bse.bmp

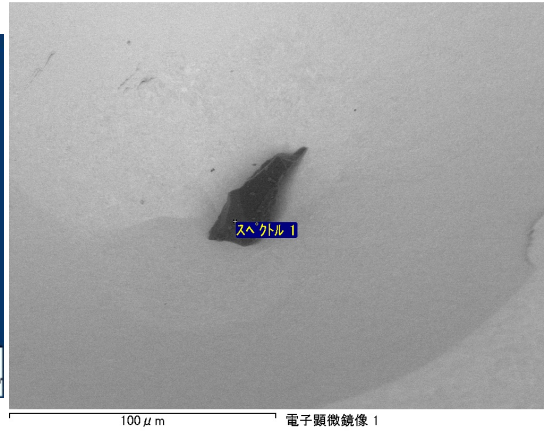
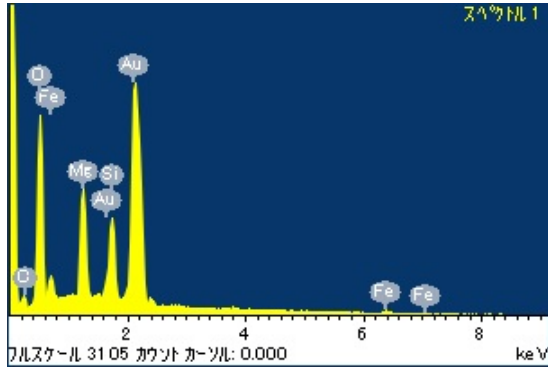
SAMPLE : RA-QD02-0133-01
PREID :
PROCESS : bse
OPERATOR : Yada, Yoshitake
COMMENT :



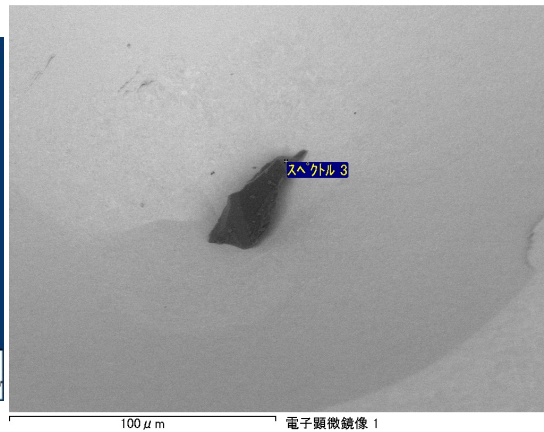
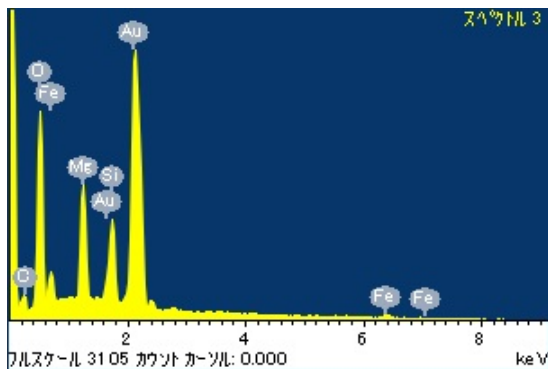
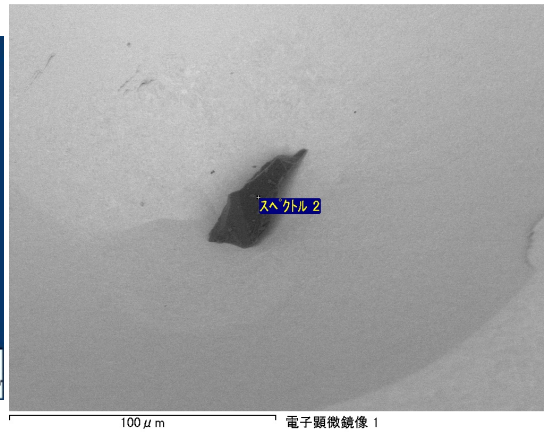
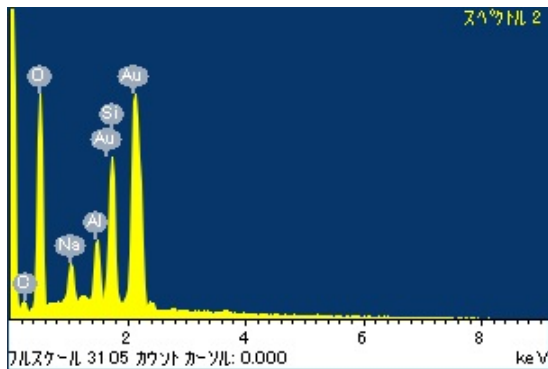
20110516/Au05SEM/BSE/133_S-1.bmp

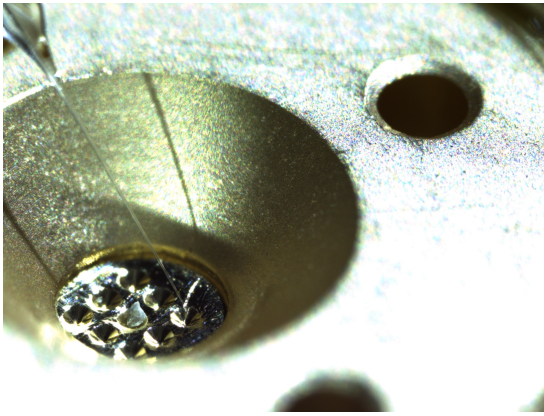
SAMPLE : RA-QD02-0133-01
PREID :
PROCESS :
OPERATOR :
COMMENT :

20110516/Au05SEM/EDS/RA-QD02-0133.docx



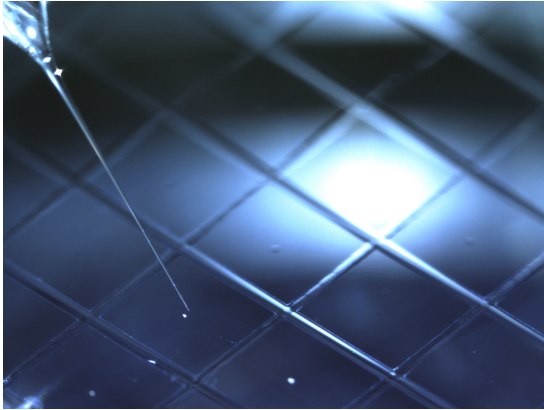
SAMPLE : RA-QD02-0133-01
PREID :
PROCESS :
OPERATOR :
COMMENT :





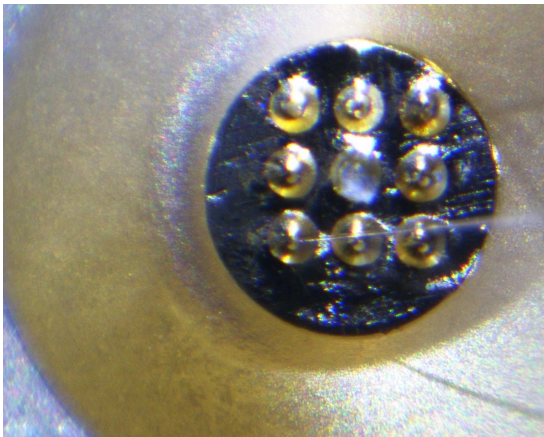
20110517/Au05toSG03/Nikon/20110517160615406.bmp

SAMPLE : RA-QD02-0133-01
PREID :
PROCESS : pick up from Au05 SEM holder
OPERATOR : Fujimura
COMMENT :



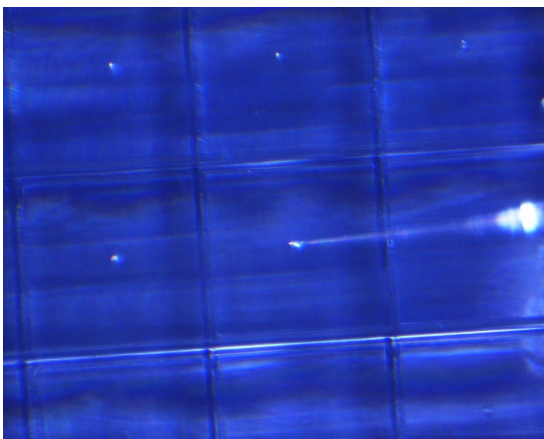
20110517/Au05toSG03/Nikon/20110517161358046.bmp

SAMPLE : RA-QD02-0133-01
PREID :
PROCESS : release to SG03f7
OPERATOR : Fujimura
COMMENT :



20110517/Au05toSG03/Union/Au05_133_pickup_S1.jpg

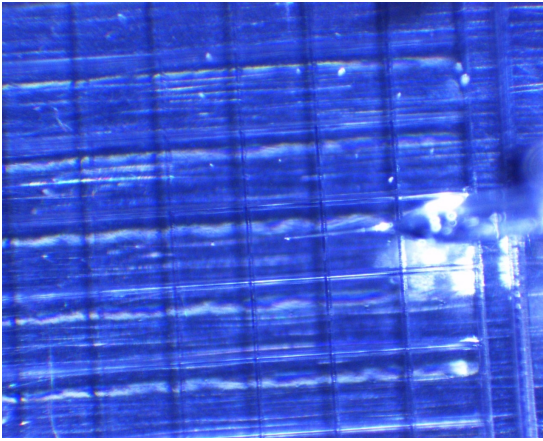
SAMPLE : RA-QD02-0133-01
PREID :
PROCESS : pick up from Au05 SEM holder
OPERATOR : Fujimura
COMMENT :



20110517/Au05toSG03/Union/Au05_133_release_SG03_S1_f7_01.jpg

SAMPLE : RA-QD02-0133-01
PREID :
PROCESS : release to SG03f7
OPERATOR : Fujimura
COMMENT :

20110517/Au05toSG03/Union/Au05_133_release_SG03_S1_f7_02.jpg



SAMPLE : RA-QD02-0133-01
PREID :
PROCESS : release to SG03f7
OPERATOR : Fujimura
COMMENT :
