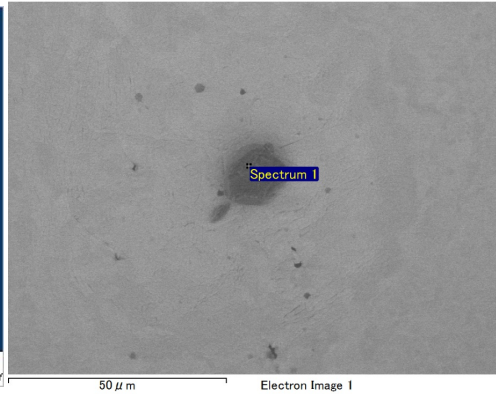
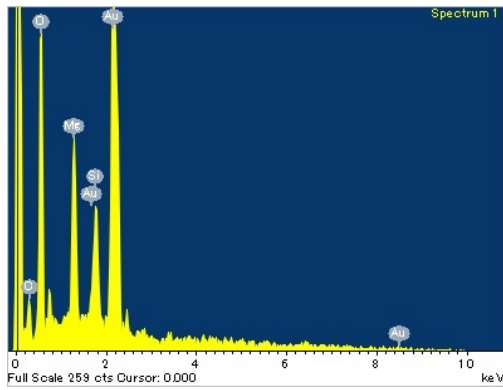
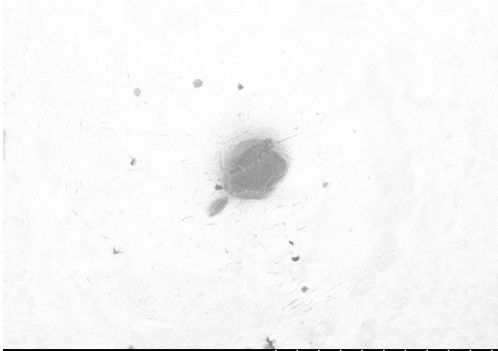
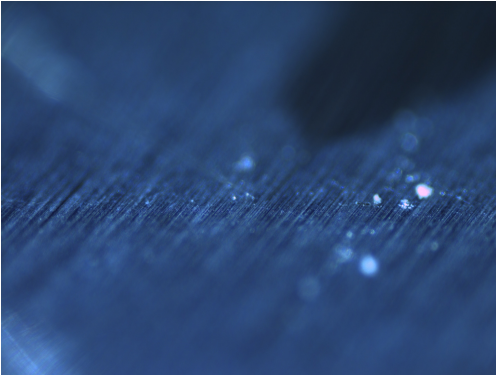


RB-CV-0257

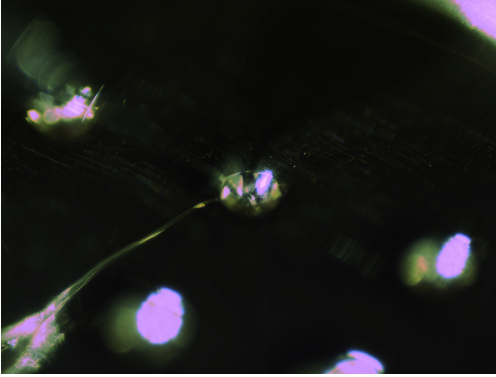
Status	Date	Size	Transfer	Category	Phase
Curation SG17e4	160217	16µm	RB-CVG0588c,SG17e4	1	ol





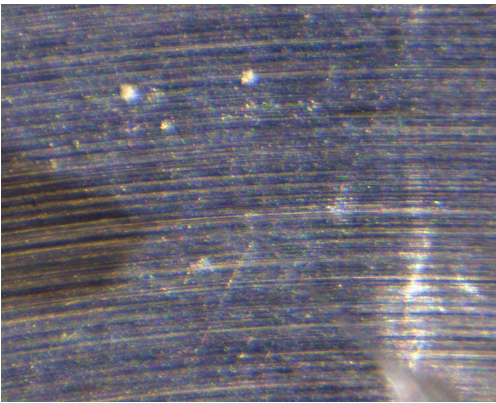
20140604/toAu11/nikon/25_CV-G588pickup.bmp

SAMPLE : RB-CV-0257
PREID : CV-G0588c
PROCESS : pick up from RBCV000
OPERATOR : Yada, Kumagai
COMMENT :



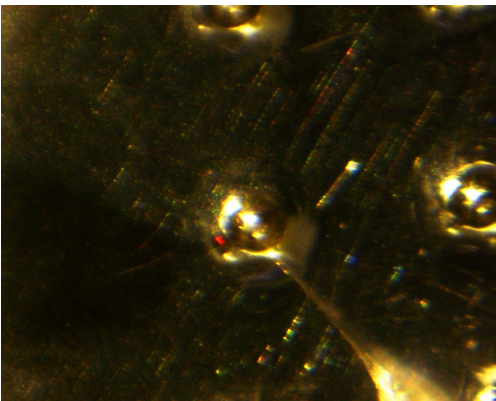
20140604/toAu11/nikon/26_CV-G588releasetoAu11s9.bmp

SAMPLE : RB-CV-0257
PREID : CV-G0588c
PROCESS : release to Au11s9
OPERATOR : Yada, Kumagai
COMMENT :



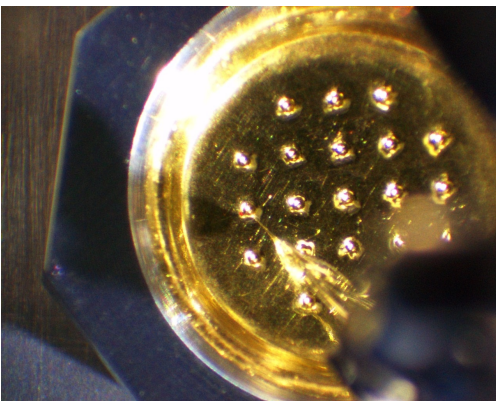
20140604/toAu11/union/25_CV-G588pickup.bmp

SAMPLE : RB-CV-0257
PREID : CV-G0588c
PROCESS : pick up from RBCV000
OPERATOR : Yada, Kumagai
COMMENT :



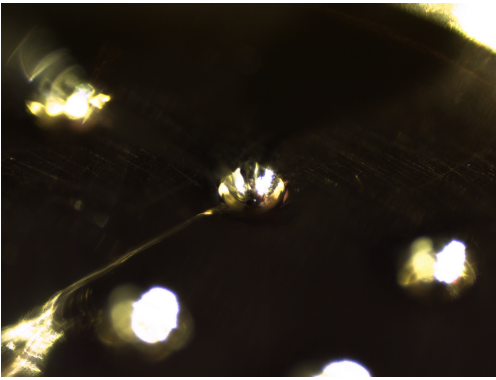
20140604/toAu11/union/26_CV-G588releasetoAu11s9.bmp

SAMPLE : RB-CV-0257
PREID : CV-G0588c
PROCESS : release to Au11s9
OPERATOR : Yada, Kumagai
COMMENT :



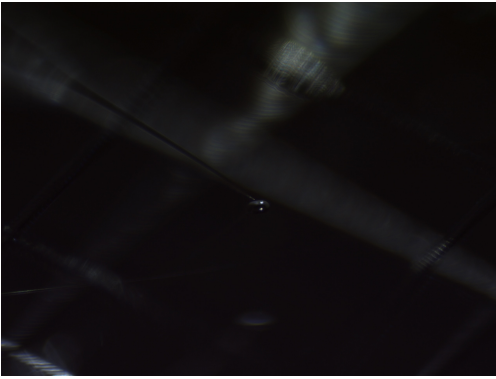
20140604/toAu11/union/27_CV-G588releasetoAu11s9.bmp

SAMPLE : RB-CV-0257
PREID : CV-G0588c
PROCESS : release to Au11s9
OPERATOR : Yada, Kumagai
COMMENT :



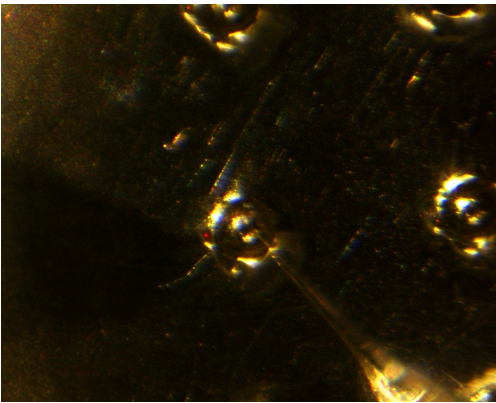
20140612/toSG17/nikon/16_Au11s9extra-01_pickupfromAu11s9.bmp

SAMPLE : RB-CV-0257
PREID : CV-G0588c
PROCESS : pick up from Au11s9
OPERATOR : Karouji, Kumagai
COMMENT :



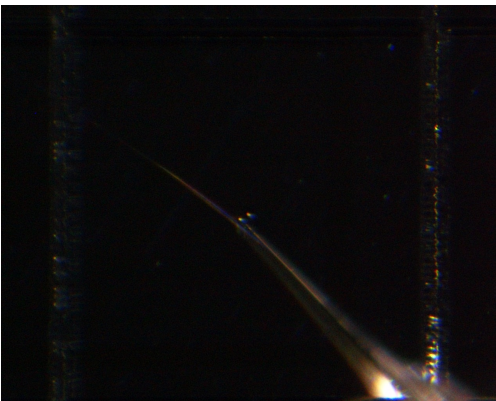
20140612/toSG17/nikon/17_Au11s9extra-01_releasetoSG17e4.bmp

SAMPLE : RB-CV-0257
PREID : CV-G0588c
PROCESS : release to SG17e4
OPERATOR : Karouji, Kumagai
COMMENT :



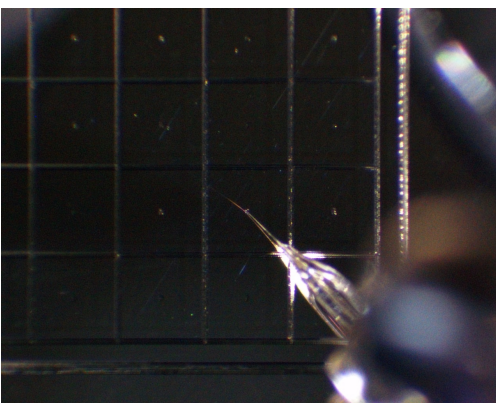
20140612/toSG17/union/16_Au11s9extra-01_pickupfromAu11s9.bmp

SAMPLE : RB-CV-0257
PREID : CV-G0588c
PROCESS : pick up from Au11s9
OPERATOR : Karouji, Kumagai
COMMENT :



20140612/toSG17/union/17_Au11s9extra-01_releasetoSG17e4.bmp

SAMPLE : RB-CV-0257
PREID : CV-G0588c
PROCESS : release to SG17e4
OPERATOR : Karouji, Kumagai
COMMENT :



20140612/toSG17/union/18_Au11s9extra-01_releasetoSG17e4.bmp

SAMPLE : RB-CV-0257
PREID : CV-G0588c
PROCESS : release to SG17e4
OPERATOR : Karouji, Kumagai
COMMENT :

20181029/CheckSG17_toSG17/nikon2/21_RB-
CV-0257_SG17e4_marked.bmp

SAMPLE : RB-CV-0257

PREID :

PROCESS : SG17e4 marked

OPERATOR : Sakamoto, Iwamae, Yoshitake

COMMENT :

